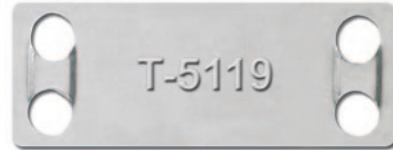


T-SERIES “EAST ENTRY” 316 STAINLESS STEEL TAGS

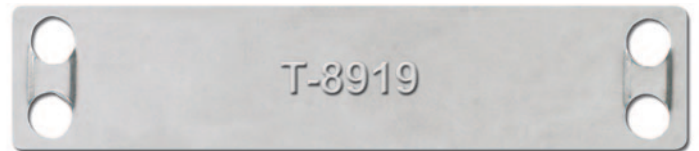
Hayata “Easy Entry” tags are made with a raised area on both sides to allow for easy insertion of stainless steel cable ties, thus allowing the tag to sit flush against a cable or pipe.

Workers appreciate how much faster the tags can be installed with the Easy Entry feature.

The T8919 and T5119 are designed to work with the SmartTag 2500 which can produce 400+ embossed one-line tags per hour or more than 180 three-line tags per hour.



Max. No. of Lines: 3 Max No. of Characters Per Line: 11
● Works with SmartTag 2500

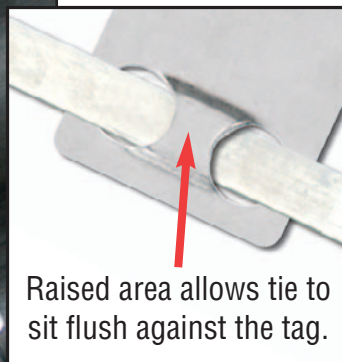


Max. No. of Lines: 3 Max No. of Characters Per Line: 23
● ● Works with SmartTag 2500 & 500

Hayata Part No.	Length		Width		Thickness	
	In	mm	In	mm	In	mm
T-5119	2.00	51	0.75	19	0.015	0.26
T-8919	3.50	89	0.75	19	0.015	0.26

● ● Material: 316 Stainless Steel – uncoated

NOTE: Characters Per Line are based on a 4mm Font Size.



Raised area allows tie to sit flush against the tag.



The strongest around.

To Order: US Toll Free: 877-785-8437 • www.Hayata.com • sales@Hayata.com