

HAYATA

The strongest around.™



SmartTag 4500

HAYATA
The strongest around.

HAYATA SMARTTAG
EMBOSSED
BARCODES

KEY 100110

MARK IT. TAG IT.
TRACK IT.
HAYATA

MARK IT. TAG IT. TRACK IT

HAYATA BT-15000

CELEBRATING
HAYATA
25
YEARS
ANNIVERSARY
1999 2024



Founded in 1999, Hayata is the only ISO 9001-2015 manufacturer of stainless steel cable ties, banding and a complete line of ID products (tags and machines) in the United States.

Hayata supports North American and international customers from its headquarters and manufacturing facility in Dallas, Texas.

Hayata's state-of-the-art warehouse in Singapore expedites deliveries in the Asia-Pacific region.

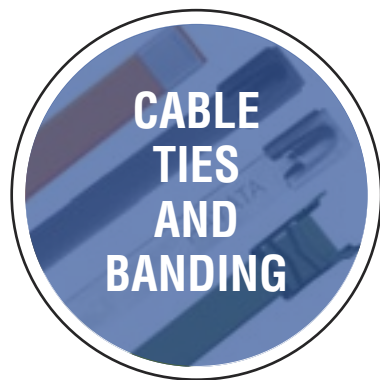


ABS EU RO CERTIFICATION



See pages 57-58 for details

Hayata is STRONG in products, innovation and customer service!



CABLE TIES AND BANDING

Hayata's corrosion-resistant coated or uncoated stainless steel cable ties and banding are designed for quick installation and long service life in harsh environments.

Focused on improving job-site productivity and installer efficiency, Hayata offers high-quality manual and battery-operated tools that help reduce installer fatigue.



INSTALLATION TOOLING



TAGGING OPERATIONS

For robust, long-lasting cable, pipe or valve tag support, no one matches Hayata's innovation or selections. Our medium- to high-volume SmartTag™ 4500 automated embossing machine outputs up to 450 standard tags per hour. Hayata also offers the portable SmartTag™ 1100 for low- to medium-volume operations and the manually operated MobileTag™ 600.

Or - let us do all the work with our 24-hour tag embossing service!



HAYATA IS THE INNOVATION LEADER!

Hayata was the first in the industry to offer:

- 360° coating and cut-to-length banding with welded buckles for faster installation
- Fully coated stainless steel ties
- Battery-powered cable tie installation tool
- Automated 2D embossed bar code tag machines
- 24-hour tag output service
- A stainless steel tag inventory with **more styles and sizes** than anyone.

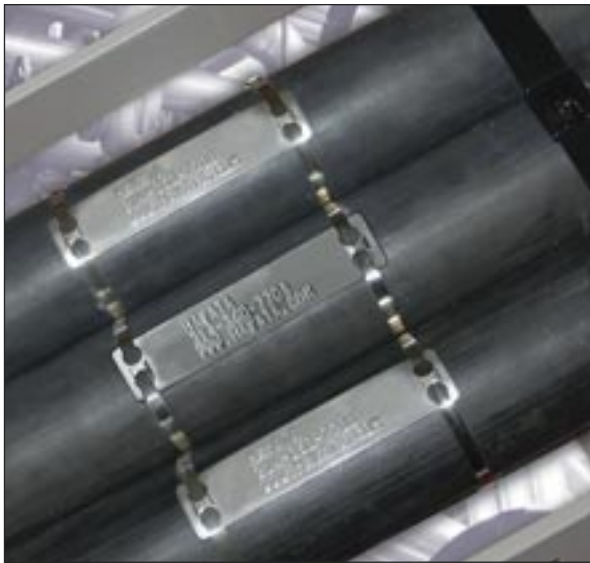


TABLE OF CONTENTS

Applications3-4

Stainless Steel Cable Ties

Acetal14
 Aluminum12
 Coated Marking12
 Installation tools15-16
 Metal Detectable14
 Nylon Tie with Stainless Steel Locking Tooth13
 Nylon Mounting Hole14
 Stainless Steel
 - Coated Cable Marking12
 - Continuous Roll11
 - D-Lock11
 - Double Loop8
 - Ladder10
 - Releaseable9
 - Roller Ball5 - 6
 - Zig Zag7

Stainless Steel Banding

Buckles and Wing Seals30
 Center Punch Bands22
 Center Punch Clamps23
 Galvanized25
 Installation tools33-34
 Insulation Banding26
 Monel®27
 Municipal Operations31
 Sign Brackets32
 Stainless Steel (coated & uncoated)17-29

Marking / Tagging

2D Embossed Barcode Tags35
 Aluminum Strapping Roll49
 Blank Stainless Steel Tags42-51
 Cable Markers52
 Embossing Machines36-40
 24-Hour Tag Service41

APPLICATIONS OVERVIEW

You can count on Hayata for high-performance cable ties and banding supported by innovative installation tooling.



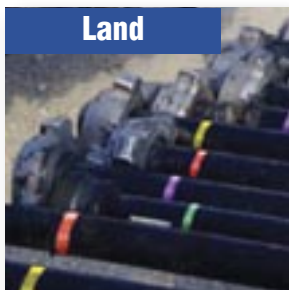
Oil & Gas / Petrochemical



Offshore



Petrochemical

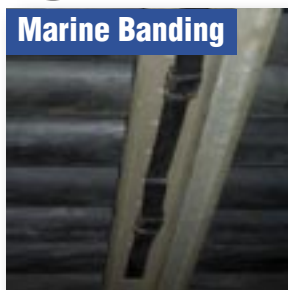


Land

SS Cable Ties	5-12
Aluminum Cable Ties	12
Acetal Ties	14
SS Banding	17-29
Color-Coated SS Banding	21-22
Blank Tags	42-51



Marine



Marine Banding



Shipboard

Coated SS Ties	5-12
Coated SS Banding	18
SS Banding	17-29
Blank Tags	42-51
Embossing Machines	36-40

If your industry is not shown, call Hayata to find the items you need for your specialized application.



Mast Arms / Pole & Enclosure Fastening



Pole Fastening

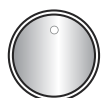


Enclosure Mount



Mast Arms

Giant Banding	20
SS Cable Ties	5-12
Double SS Ties	8
SS Coated Banding	17-29
Sign Brackets	32
Bolt Clamps	32
Snap Screw Clamps	32



Marking / Tagging

Hayata leads the industry in leading-edge tagging machines and variety of stainless steel tags.



Banding & Tagging

SS Cable Ties	5-12
Coated SS Ties	5-12
Embossing Machines	36-40
Blank Tags	42-51
Cable Markers	52



Pipe & Valve Tags

Coated Cable Ties	12
Coated Cable Bands	21
Embossing Machines	36-40
Blank Tags	42-51
Cable Markers	52



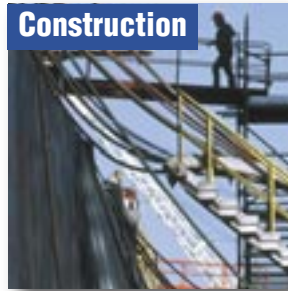


Utility / Construction / Manufacturing / Industrial



Utility

SS Cable Ties5-12
Acetal Ties14
SS Banding17-29
Giant Banding20



Construction

SS Cable Ties5-12
Aluminum Cable Ties . .12
Acetal Ties14
Nylon Steel Tooth Ties .13
SS Banding17-29



Robotics

SS Cable Ties5-12
Aluminum Cable Ties . .12
Acetal Ties14
SS Banding17-29
Nylon Steel Tooth Ties .13



Telecomm

SS Cable Ties5-12
Aluminum Cable Ties . .12
Acetal Ties14
SS Banding17-29
Snap Screw Clamps . .32



Maintenance

SS Cable Ties5-12
Acetal Ties14
SS Banding17-29
Nylon Steel Tooth Ties .13



Transportation

SS Cable Ties5-12
D-Lock Ties11
Aluminum Cable Ties . .12
Acetal Ties14
Nylon Steel Tooth Ties .13
SS Banding17-29



Food Processing

SS Cable Ties5-12
Aluminum Cable Ties . .12
Acetal Ties14
Metal Detectable Ties .14
SS Banding17-29



Mining

SS Cable Ties5-12
Acetal Ties14
Nylon Steel Tooth Ties .13
SS Banding17-29



Military



Mil-Spec

SS Cable Ties5-12
SS Banding17-29
Aluminum Cable Ties . . .12
Acetal Ties14
Blank Tags42-51
Embossing Machines . .36-40



Hose Clamps



D-Lock Ties11
Center Punch
Clamp23
SS Banding17-29
Blank Tags42-51
Embossing Machines . .36-40



Installation Tools

Battery Powered & Manual

Cable Tie Tools15-16
Cable Band Tools . .33-34



STAINLESS STEEL CABLE TIES

Hayata stainless steel cable ties can be used in virtually all indoor, outdoor and underground (including direct burial) applications. Their high strength, non-flammability and rounded edges make them well-suited for network bundling of data and power cables.

- Material: Type 304 or 316 (highly corrosive environments) stainless steel
- Resistance to chemicals and salt sprays – No water absorption
- Non-toxic, halogen-free & non-flammable
- Excellent chemical & UV resistance
- Uncoated temperature range: -112°F (-80°C) to 1000°F (538°C)
- Coated temperature range: -112°F (-80°C) to 302°F (150°C)
- Sharp edges and burrs are removed to protect installation and bundle
- Self-locking mechanism speeds installation, lowering overall installed cost
- Can be used for air handling spaces
- Radiation resistance: 2 x 108 rads



Excellent resistance to temperature extremes, corrosion, weather, chemicals, salt sprays & UV radiation.



Roller Ball Ties • 225 Lb. Uncoated / 200 Lb. Coated Standard • 316 SS

UNCOATED Part No.	COATED Part No.	LENGTH		WIDTH		THICKNESS UNCOATED		THICKNESS COATED		BUNDLE DIAMETER		BAG Wt. lbs	PACKAGING		
		In	mm	In	mm	In	mm	In	mm	Min	Max		Ties Per Bag	Bags Per Box	Bag (LxWmm)
TBC100	TBC100C	4	100	0.18	4.6	0.01	0.26	0.01	0.33	0.5" (12.7)	1" (25)	0.37	100	50	200x150
TBC150	TBC150C	6	150	0.18	4.6	0.01	0.26	0.01	0.33	0.5" (12.7)	1.5" (39)	0.46	100	50	200x150
TBC200	TBC200C	8	200	0.18	4.6	0.01	0.26	0.01	0.33	0.5" (12.7)	2" (50)	0.57	100	50	255x150
TBC360	TBC360C	14	360	0.18	4.6	0.01	0.26	0.01	0.33	0.5" (12.7)	4" (100)	0.92	100	35	410x150
TBC520	TBC520C	20.5	520	0.18	4.6	0.01	0.26	0.01	0.33	0.5" (12.7)	6" (150)	1.23	100	25	580x150
TBC680	TBC680C	26.5	680	0.18	4.6	0.01	0.26	0.01	0.33	0.5" (12.7)	8" (200)	1.54	100	15	430x230
TBC840	TBC840C	33	840	0.18	4.6	0.01	0.26	0.01	0.33	0.5" (12.7)	10" (250)	1.91	100	10	430x230
TBC1000	TBC1000C	39	1000	0.18	4.6	0.01	0.26	0.01	0.33	0.5" (12.7)	12" (300)	2.29	100	10	430x230
TBC1200	TBC1200C	47	1200	0.18	4.6	0.01	0.26	0.01	0.33	0.5" (12.7)	14" (365)	2.73	100	10	430x230
TBC1400	TBC1400C	55	1400	0.18	4.6	0.01	0.26	0.01	0.33	0.5" (12.7)	17" (425)	3.17	100	10	430x230

Hayata Application Tools: CT-3, CT-5, CT-7, BT9000, BT15000 or By Hand
Applications & Approvals: General Bundling, Packaging, cUL Listed, DNV Approved, Lloyd's Type Approval, ABS Type Approval



NEW!

EZID TIES

EZID ties come with an uncoated head and a coated tie strap. Add -EZID to the end of a coated tie's part number to make it an EZID tie. *Example:* TBC1000C-EZID





Roller Ball Ties • 475 Lb. Uncoated / 300 Coated Heavy Duty • 316 SS

UNCOATED Part No.	COATED Part No.	LENGTH		WIDTH		THICKNESS UNCOATED		THICKNESS COATED		BUNDLE DIAMETER		BAG Wt. lbs	PACKAGING		
		In	mm	In	mm	In	mm	In	mm	Min	Max		Ties Per Bag	Bags Per Box	Bag (LxWmm)
TBC200H	TBC200HC	8	200	0.31	7.9	0.01	0.26	0.01	0.33	0.5" (12.7)	2" (50)	1.12	100	25	265x150
TBC360H	TBC360HC	14	360	0.31	7.9	0.01	0.26	0.01	0.33	0.5" (12.7)	4" (100)	1.69	100	25	420x150
TBC520H	TBC520HC	20.5	520	0.31	7.9	0.01	0.26	0.01	0.33	0.5" (12.7)	6" (150)	2.2	100	20	580x150
TBC680H	TBC680HC	26.5	680	0.31	7.9	0.01	0.26	0.01	0.33	0.5" (12.7)	8" (200)	2.82	100	10	430x230
TBC840H	TBC840HC	33	840	0.31	7.9	0.01	0.26	0.01	0.33	0.5" (12.7)	10" (250)	3.39	100	5	430x230
TBC1000H	TBC1000HC	39	1000	0.31	7.9	0.01	0.26	0.01	0.33	0.5" (12.7)	12" (300)	3.89	100	5	430x230
TBC1200H	TBC1200HC	47	1200	0.31	7.9	0.01	0.26	0.01	0.33	0.5" (12.7)	14" (365)	4.49	100	5	430x230
TBC1400H	TBC1400HC	55	1400	0.31	7.9	0.01	0.26	0.01	0.33	0.5" (12.7)	17" (425)	5.15	100	5	430x230



Roller Ball Ties • 525 Lb. Uncoated / 425 Lb. Coated Heavy Duty • 316 SS

UNCOATED Part No.	COATED Part No.	LENGTH		WIDTH		THICKNESS UNCOATED		THICKNESS COATED		BUNDLE DIAMETER		BAG Wt. lbs	PACKAGING		
		In	mm	In	mm	In	mm	In	mm	Min	Max		Ties Per Bag	Bags Per Box	Bag (LxWmm)
TBC200XHD	TBC200XHDC	8	200	0.5	12.5	0.02	0.35	0.02	0.47	1" (25.4)	2" (50)	1.54	100	10	255x230
TBC290XHD	TBC290XHDC	11.5	290	0.5	12.5	0.02	0.35	0.02	0.47	1" (25.4)	3.1" (80)	2.2	100	10	340x230
TBC360XHD	TBC360XHDC	14	360	0.5	12.5	0.02	0.35	0.02	0.47	1" (25.4)	3.9" (100)	2.86	100	10	420x230
TBC520XHD	TBC520XHDC	20.5	520	0.5	12.5	0.02	0.35	0.02	0.47	1" (25.4)	5.9" (150)	3.96	100	10	430x300
TBC680XHD	TBC680XHDC	26.5	680	0.5	12.5	0.02	0.35	0.02	0.47	1" (25.4)	7.9" (200)	5.28	100	5	430x300
TBC840XHD	TBC840XHDC	33	840	0.5	12.5	0.02	0.35	0.02	0.47	1" (25.4)	9.8" (250)	6.38	100	5	430x300
TBC1000XHD	TBC1000XHDC	39	1000	0.5	12.5	0.02	0.35	0.02	0.47	1" (25.4)	11.8" (300)	7.48	100	5	430x300



Roller Ball Ties • 1000 Lb. Uncoated / 500 Lb. Coated Heavy Duty • 316 SS

UNCOATED Part No.	COATED Part No.	LENGTH		WIDTH		THICKNESS UNCOATED		THICKNESS COATED		BUNDLE DIAMETER		BAG Wt. Lb	PACKAGING		
		In	mm	In	mm	In	mm	In	mm	Min	Max		Ties Per Bag	Bags Per Box	Bag (LxWmm)
TBC457XXHD	TBC457XXHDC	18	457	.625	15.88	0.01	0.35	0.02	0.45	1" (25.4)	4.3" (109)	0.9	50	20	380x230
TBC610XXHD	TBC610XXHDC	24	610	.625	15.88	0.01	0.35	0.02	0.45	1" (25.4)	6.2" (158)	1.2	50	20	380x230
TBC762XXHD	TBC762XXHDC	30	762	.625	15.88	0.01	0.35	0.02	0.45	1" (25.4)	8.1" (206)	1.4	50	20	510x230

Hayata Application Tools: BT15000, CT-7 or By Hand

Applications & Approvals: General Bundling, Packaging, ABS Type Approval, cUL Listed.



To Order: US Toll-Free: 833-862-1668 • www.Hayata.com • sales@Hayata.com

Zig Zag Ties

Hayata's Zig Zag stainless steel cable ties are designed to maintain tension on hard surfaces such as a pipe or steel poles. All Zig Zag ties are 316 grade stainless steel for excellent resistance to temperature extremes, corrosion, weather, chemicals, salt sprays and UV radiation.

- Resistance to chemicals and salt sprays
- Non-toxic, halogen-free

Cable ties designed to maintain tension, like banding, on hard surfaces such as a pipe or steel poles



Zig Zag Ties • 200 Lb. • 316 SS



UNCOATED Part No.	COATED Part No.	LENGTH		WIDTH		THICKNESS UNCOATED		THICKNESS COATED		BUNDLE DIAMETER		BAG Wt. lbs	PACKAGING		
		In	mm	In	mm	In	mm	In	mm	In	mm		Ties Per Bag	Bags Per Box	Bag (LxWmm)
TBC200Z	TBC200ZC	8	200	0.18	4.5	0.01	0.26	0.01	0.33	2"	50	0.57	100	50	255X150
TBC360Z	TBC360ZC	14	360	0.18	4.5	0.01	0.26	0.01	0.33	4"	100	0.92	100	35	410X150
TBC520Z	TBC520ZC	20.5	520	0.18	4.5	0.01	0.26	0.01	0.33	6"	150	1.23	100	25	580X150
TBC680Z	TBC680ZC	26.5	680	0.18	4.5	0.01	0.26	0.01	0.33	8"	200	1.54	100	15	430X230
TBC840Z	TBC840ZC	33	840	0.18	4.5	0.01	0.26	0.01	0.33	10"	250	1.91	100	10	430X230
TBC1000Z	TBC1000ZC	39	1000	0.18	4.5	0.01	0.26	0.01	0.33	12"	300	2.29	100	10	430X230
TBC1200Z	TBC1200ZC	47	1200	0.18	4.5	0.01	0.26	0.01	0.33	14"	365	2.73	100	10	430X230
TBC1400Z	TBC1400ZC	55	1400	0.18	4.5	0.01	0.26	0.01	0.33	17"	425	3.17	100	10	430X230



Zig Zag Ties • 350 Lb. • 316 SS



UNCOATED Part No.	COATED Part No.	LENGTH		WIDTH		THICKNESS UNCOATED		THICKNESS COATED		BUNDLE DIAMETER		BAG Wt. lbs	PACKAGING		
		In	mm	In	mm	In	mm	In	mm	Min	Max		Ties Per Bag	Bags Per Box	Bag (LxWmm)
TBC200HZ	TBC200HZC	8	200	0.31	4.5	0.01	0.26	0.01	0.33	2"	50	1.12	100	25	255X150
TBC360HZ	TBC360HZC	14	360	0.31	4.5	0.01	0.26	0.01	0.33	4"	100	1.69	100	20	410X150
TBC520HZ	TBC520HZC	20.5	520	0.31	4.5	0.01	0.26	0.01	0.33	6"	150	2.2	100	15	580X150
TBC680HZ	TBC680HZC	26.5	680	0.31	4.5	0.01	0.26	0.01	0.33	8"	200	2.82	100	10	430X230
TBC840HZ	TBC840HZC	33	840	0.31	4.5	0.01	0.26	0.01	0.33	10"	250	3.39	100	5	430X230
TBC1000HZ	TBC1000HZC	39	1000	0.31	4.5	0.01	0.26	0.01	0.33	12"	300	3.89	100	5	430X230
TBC1200HZ	TBC1200HZC	47	1200	0.31	4.5	0.01	0.26	0.01	0.33	14"	365	4.49	100	5	430X230
TBC1400HZ	TBC1400HZC	55	1400	0.31	4.5	0.01	0.26	0.01	0.33	17"	425	5.15	100	5	430X230

Hayata Application Tools: CT-3, CT-5, CT-7, BT2000, BT9000, BT15000 or By Hand

Applications: Where tension on solid object must be maintained – Pipes, Poles, etc.

Approvals: ABS Type Approval

Double-Loop Ties

Double-loop stainless steel cable ties for twice the holding power vs. standard stainless steel ties.



Double-Loop Ties • 800 Lb. • 316 SS



UNCOATED Part No.	COATED Part No.	LENGTH		WIDTH		THICKNESS UNCOATED		THICKNESS COATED		MAX BUNDLE DIAMETER		BAG Wt. Lb	PACKAGING		
		In	mm	In	mm	In	mm	In	mm	In	mm		Ties Per Bag	Bags Per Box	Bag (LxWmm)
TBC470H-DL	TBC470H-DLC	18.5	470	0.31	7.9	0.01	0.26	0.013	0.33	2	51	2.09	100	20	580x150
TBC711H-DL	TBC711H-DLC	28	711	0.31	7.9	0.01	0.26	0.013	0.33	4	102	3.19	100	10	430x230
TBC863H-DL	TBC863H-DLC	34	863	0.31	7.9	0.01	0.26	0.013	0.33	5	127	3.85	100	10	430x230
TBC1016H-DL	TBC1016H-DLC	40	1016	0.31	7.9	0.01	0.26	0.013	0.33	6	152	4.44	100	5	430x230

Hayata Application Tools: CT-3, CT-5, CT-7, BT15000 or By Hand
Applications: General Bundling, Heavy Corrosive Environment, Short Circuit Tested
Approvals: ABS Type Approval, DNV Approved



Double-Loop Ties • 1200 Lb. • 316 SS



UNCOATED Part No.	COATED Part No.	LENGTH		WIDTH		THICKNESS UNCOATED		THICKNESS COATED		MAX BUNDLE DIAMETER		BAG Wt. Lb	PACKAGING		
		In	mm	In	mm	In	mm	In	mm	In	mm		Ties Per Bag	Bags Per Box	Bag (LxWmm)
TBC749XHD-DL	TBC749XHD-DLC	29.5	749	1/2	12.5	0.02	0.35	0.018	0.47	2	51	6.16	100	5	430x300
TBC1054XHD-DL	TBC1054XHD-DLC	41.5	1054	1/2	12.5	0.02	0.35	0.018	0.47	4	102	8.47	100	5	430x300
TBC1359XHD-DL	TBC1359XHD-DLC	53.5	1359	1/2	12.5	0.02	0.35	0.018	0.47	5	127	11.22	100	5	430x300

Hayata Application Tools: CT-3, CT-7, BT15000 or By Hand
Applications: General Bundling, Heavy Corrosive Environment, Short Circuit Tested
Approvals: ABS Type Approval, DNV Approved



Double-Loop Ties • 1250 Lb. • 316 SS



UNCOATED Part No.	COATED Part No.	LENGTH		WIDTH		THICKNESS UNCOATED		THICKNESS COATED		MAX BUNDLE DIAMETER		BAG Wt. Lb	PACKAGING		
		In	mm	In	mm	In	mm	In	mm	In	mm		Ties Per Bag	Bags Per Box	Bag (LxWmm)
TBC749XXHD-DL	TBC749XXHD-DLC	29.5	749	5/8"	15.88	0.02	0.35	0.018	0.47	4	102	8.8	50	10	510x230
TBC1054XXHD-DL	TBC1054XXHD-DLC	41.5	1054	5/8"	15.88	0.02	0.35	0.018	0.47	5	127	12.43	50	10	510x230
TBC1359XXHD-DL	TBC1359XXHD-DLC	53.5	1359	5/8"	15.88	0.02	0.35	0.018	0.47	6	152	15.95	50	10	510x230

Hayata Application Tools: CT-7, BT15000 or By Hand
Applications: General Bundling, Heavy Corrosive Environment, Short Circuit Tested
Approvals: ABS Type Approval, DNV Approved

Releasable Ties

Hayata releasable cable ties can be used in virtually all indoor, outdoor and underground (including direct burial) applications. They are well-suited for network bundling of data and power cables. Their high strength, non-flammability and rounded edges provide the definitive support for network cables.

All coated ties are 316 grade stainless steel for excellent resistance to temperature extremes, corrosion, weather, chemicals, salt sprays and UV radiation. Non-toxic, halogen-free.

- No water absorption / Non-flammable
- Uncoated temperature range: -112°F (-80°C) to 1000°F (538°C)
- Coated temperature range: -112°F (-80°C) to 302°F (150°C)
- Excellent chemical and UV resistance
- Excellent chemical and UV resistance
- Can be used for air handling spaces
- Radiation resistance: 2 x 10⁸ rads
- Sharp edges and burrs have been removed to protect installation and bundle



Releasable Ties 75 Lb. Single Wrap / 300 Lb. Double Wrap 316 SS



UNCOATED Part No.	COATED Part No.	LENGTH		WIDTH		THICKNESS UNCOATED		THICKNESS COATED		BUNDLE DIAMETER		BAG Wt. lbs	PACKAGING		
		In	mm	In	mm	In	mm	In	mm	In	mm		Ties Per Bag	Bags Per Box	Bag (LxWmm)
KRCT150/5	KRCT150/5C	6	150	.19	5	0.02	0.5	0.02	0.61	1.4"	36	0.81	100	25	300x190
KRCT230/5	KRCT230/5C	9	230	.19	5	0.02	0.5	0.02	0.61	2.3"	60	1.25	100	20	300x190
KRCT305/5	KRCT305/5C	12	305	.19	5	0.02	0.5	0.02	0.61	3.7"	95	1.76	100	10	500x190
KRCT450/5	KRCT450/5C	17.7	450	.19	5	0.02	0.5	0.02	0.61	5.1"	130	2.4	100	20	600x190
KRCT610/5	KRCT610/5C	24	610	.19	5	0.02	0.5	0.02	0.61	7.2"	180	3.3	100	5	750x190

Hayata Application Tools: CT-4 or By Hand

Applications: Reusable, General Bundling

Approvals: cUL Listed, Coated Releasable ties are DNV Approved, ABS Type Approval, Lloyds Type Approval

Custom Colors Available – Call for quote!



Releasable Ties 250 Lb. Single Wrap / 450 Lb. Double Wrap 316 SS



UNCOATED Part No.	COATED Part No.	LENGTH		WIDTH		THICKNESS UNCOATED		THICKNESS COATED		BUNDLE DIAMETER		BAG Wt. lbs	PACKAGING		
		In	mm	In	mm	In	mm	In	mm	In	mm		Ties Per Bag	Bags Per Box	Bag (LxWmm)
KRCT150/10	KRCT150/10C	6	150	.39	10	0.02	0.5	0.02	0.61	1.4"	36	1.69	100	10	230x250
KRCT230/10	KRCT230/10C	9	230	.39	10	0.02	0.5	0.02	0.61	2.3"	60	2.51	100	10	230x380
KRCT305/10	KRCT305/10C	12	305	.39	10	0.02	0.5	0.02	0.61	3.7"	95	3.74	100	10	230x480
KRCT450/10	KRCT450/10C	17.7	450	.39	10	0.02	0.5	0.02	0.61	5.1"	130	5.1	100	5	230x600
KRCT610/10	KRCT610/10C	24	610	.39	10	0.02	0.5	0.02	0.61	7.2"	185	6.93	100	10	230x760
KRCT762/10	KRCT762/10C	30	762	.39	10	0.02	0.5	0.02	0.61	9.2"	230	8.69	100	5	230x910
KRCT914/10	KRCT914/10C	36	914	.39	10	0.02	0.5	0.02	0.61	10.6"	275	10.34	100	5	230x1060

Hayata Application Tools: CT-4 or By Hand

Applications: Reusable, General Bundling

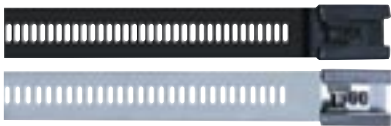
Approvals: cUL Listed, Coated Releasable ties are DNV Approved, ABS Type Approval, Lloyds Type Approval

Ladder Ties

Hayata ladder style cable ties can be used in virtually all indoor, outdoor and underground (including direct burial) applications. They are well-suited for network bundling of data and power cables. Their high strength, non-flammability and rounded edges provide the definitive support for network cables.

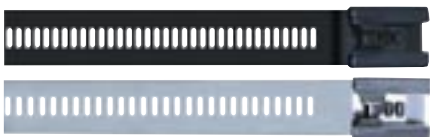
All coated ties are 316 grade stainless steel for excellent resistance to temperature extremes, corrosion, weather, chemicals salt sprays and UV radiation.

- Non-toxic, halogen-free
- No water absorption
- Non-flammable
- Uncoated temperature range: -112°F (-80°C) to 1000°F (538°C)
- Coated temperature range: -112°F (-80°C) to 302°F (150°C)
- Excellent chemical and UV resistance
- Can be used for air handling spaces
- Radiation resistance: 2 x 10⁸ rads
- Sharp edges and burrs have been removed to protect installation and bundle



Ladder Ties • 250 Lb. Standard • 316 SS

UNCOATED Part No.	COATED Part No.	LENGTH		WIDTH		THICKNESS UNCOATED		THICKNESS COATED		BUNDLE DIAMETER		BAG Wt. lbs	PACKAGING		
		In	mm	In	mm	In	mm	In	mm	In	mm		Ties Per Bag	Bags Per Box	Bag (LxWmm)
KST225/7	KST225/7C	9	225	.25	7	0.01	0.3	0.02	0.41	2.36"	70	0.34	100	25	150x280
KST300/7	KST300/7C	12	300	.25	7	0.01	0.3	0.02	0.41	3.14"	95	0.97	100	25	150x350
KST360/7	KST360/7C	14	360	.25	7	0.01	0.3	0.02	0.41	3.93"	105	1.21	100	20	150x410
KST450/7	KST450/7C	17.75	450	.25	7	0.01	0.3	0.02	0.41	5.31"	140	1.43	100	20	150x500
KST610/7	KST610/7C	24	610	.25	7	0.01	0.3	0.02	0.41	7.28"	190	1.74	100	5	230x430
KST750/7	KST750/7C	29.5	750	.25	7	0.01	0.3	0.02	0.41	9.05"	235	2.20	100	5	230x430
KST915/7	KST915/7C	36	915	.25	7	0.01	0.3	0.02	0.41	11.00"	280	3.08	100	5	230x430



Ladder Ties • 450 Lb. Heavy Duty • 316 SS

UNCOATED Part No.	COATED Part No.	LENGTH		WIDTH		THICKNESS UNCOATED		THICKNESS COATED		BUNDLE DIAMETER		BAG Wt. lbs	PACKAGING		
		In	mm	In	mm	In	mm	In	mm	In	mm		Ties Per Bag	Bags Per Box	Bag (LxWmm)
KST225/12	KST225/12C	9	225	.5	12	0.01	0.35	2.75	60	2.36"	70	1.80	100	20	150x280
KST300/12	KST300/12C	12	300	.5	12	0.01	0.35	3.74	80	3.14"	95	2.29	100	20	150x350
KST360/12	KST360/12C	14	360	.5	12	0.01	0.35	4.13	105	3.93"	105	2.86	100	15	150x410
KST450/12	KST450/12C	17.75	450	.5	12	0.01	0.35	4.53	115	5.31"	140	3.67	100	10	150x500
KST610/12	KST610/12C	24	610	.5	12	0.01	0.35	5.91	150	7.28"	190	4.40	100	5	230x430
KST750/12	KST750/12C	29.5	750	.5	12	0.01	0.35	7.87	200	9.05"	235	5.41	100	5	300x430
KST915/12	KST915/12C	36	915	.5	12	0.01	0.35	11.81	300	11.00"	295	7.22	100	5	300x430

Hayata Application Tools: CT-3, CT-4, CT-5,* BT15000 or By Hand
Applications: General Bundling
Approvals: DNV Approved, ABS Type Approval, cUL Listed.

*CT-5 works with 250 lb. uncoated ties only.

D-Lock™ Ties

Hayata's D-Lock™ stainless steel cable ties are for applications such as the installation of cable or hose, tagging operations, general bundling, packaging and securing. With a high rated tensile strength, D-Lock is an easy-to-install, fit-for-purpose cable tie that will deliver reliable performance in the toughest operating conditions.

D-LOCK™ Ties • 100 & 200 Lb. • 304 SS



Part No.	LENGTH		WIDTH		TENSILE STRENGTH	MAXIMUM DIAMETER		PACKAGING Ties Per Bag
	In	mm	In	mm	Lbs	In	mm	
D304-165	6.5	165	.177	4.5	100	1	25	100
D304-254	10	254	.177	4.5	100	2	51	100
D304-406	16	406	.177	4.5	100	4	102	100
D304-572	22.5	572	.177	4.5	100	6	152	100
D304-737	29	572	.177	4.5	100	8	203	100
D304-254H	10	254	.25	6.3	200	2	51	100
D304-406H	16	406	.25	6.3	200	4	102	100
D304-572H	22.5	572	.25	6.3	200	6	152	100
D304-737H	29	737	.25	6.3	200	8	203	100
D304-889H	35	889	.25	6.3	200	10	254	100

Applications: General Bundling, Packaging, Securing.

Continuous Roll Ties

Hayata's continuous roll stainless steel cable ties are for applications that require various cut-to-length sizes on the job. This allows the operator to pull the required tie length and cut based on specified bundle size. Heads are then easily slipped on to complete the tie. 200 Lb. and 350 Lb. tensile strength, are stocked.

If you need stronger ties (450 Lb. and 900 Lb.) for your application, please call for minimum requirements.

Heads for Continuous Roll Ties • 316 SS



Continuous Roll 316 Stainless Steel

Part No.	LENGTH		WIDTH		THICKNESS UNCOATED		MAXIMUM BUNDLE		PACKAGING
	Ft	M	In	mm	In	mm	In	mm	Roll per Box
TBC200LB/50	164	50	.18	4.6	0.01	0.26	Any	Any	1
TBC350LB/50	164	50	.31	7.9	0.01	0.26	Any	Any	1
TBC200LB/100	328	100	.18	4.6	0.01	0.26	Any	Any	1
TBC350LB/100	328	100	.31	7.9	0.01	0.26	Any	Any	1

Heads for Uncoated Part No.	Quantity Per Box
TBC200LBHEAD	100
TBC350LBHEAD	100

Note: Heads are to be used with matching continuous rolls listed. ABS Type Approval.

Hayata Application Tools: CT-3, CT-5, CT-7, BT9000, BT15000

Applications: General. User can determine length of tie.

To figure the length of banding to use on each application, follow this formula: [(Diameter x 3.14) + 2.5 inches] (64 mm)

Coated Cable Marking Ties

Hayata's highly durable coated stainless steel cable ties are a great option for high-volume marking and maintenance operations. These fully coated ties resist fading due to weather and harsh environments.

STANDARD COLORS



- Available in 200 Lb, 300 Lb, 425 Lb and 500 Lb
- Easy visual identification
- All stainless steel ties are fully coated
- Pre-cut lengths come with installed roller ball buckle
- Allows tag to be spun on pipe for easier inspection
- High tensile strength exceeds industry standards
- Wide variety of lengths and standard or special order colors
- ABS Type Approval

SPECIAL ORDER COLORS



Part No.		LENGTH		WIDTH		COLORS/ORDER SUFFIX			PACKAGING Ties per Bag
200 Lb	300 Lb	In	mm	In	mm	Standard	Special Order Colors		
TBC200C	TBC200HC	18	457	1/2	12.7	Blue - BE	Brown - BN	Pink - PK	100
TBC360C	TBC360HC	22	558	1/2	12.7	Green - GN	Grey - GY	Purple - PE	
TBC520C	TBC520HC	27	680	1/2	12.7	Red - RD	Light Blue - LB	Tan - TN	
TBC680C	TBC680HC	30	762	1/2	12.7	White - WE	Orange - OE		
TBC840C	TBC840HC	40	1,016	1/2	12.7	Yellow - YW			

Aluminum Ties Lighter-weight alternative to stainless steel ties

- Non-toxic, halogen-free & non-flammable
- Excellent chemical & UV resistance
- Uncoated temperature range: -112°F (-80°C) to 1000°F (538°C)
- Coated temperature range: -112°F (-80°C) to 302°F (150°C)
- Self-locking mechanism speeds installation, lowering overall installed cost
- Sharp edges and burrs are removed to protect installation and bundle



Roller Ball Ties • 50 Lb. • Aluminum



UNCOATED Part No.	COATED Part No.	LENGTH		WIDTH		THICKNESS		MAX BUNDLE DIAMETER		BAG Wt. Lb	PACKAGING		
		In	mm	In	mm	In	mm	In	mm		Ties Per Bag	Bags Per Box	Bag (LxWmm)
TBC150AL	TBC150ALC	6"	150	0.31	7.9	0.01	0.03	1.5	39	0.24	100	25	200X150
TBC200AL	TBC200ALC	8"	200	0.31	7.9	0.01	0.03	2	51	0.27	100	25	255X150
TBC360AL	TBC360ALC	14"	360	0.31	7.9	0.01	0.03	4	102	0.36	100	20	420X150
TBC520AL	TBC520ALC	20.5"	520	0.31	7.9	0.01	0.03	6	151	0.52	100	20	580X150

Hayata Application Tools: CT-3, CT-5, CT-7, BT15000

Applications: Marine, Defense

Approval: ABS Type Approval

To Order: US Toll-Free: 833-862-1668 • www.Hayata.com • sales@Hayata.com

Stainless Steel Tooth Metal-Lock Nylon Cable Ties

Hayata features a full line of high tensile strength metal-lock nylon ties with a robust stainless steel tooth for more precise and long lasting tie-lock.



- Smooth rounded-style head
- Stainless Steel locking tooth provides infinite adjustability through its entire bundle range
- Low thread force reduces installer fatigue
- High tensile strength exceeds industry standards
- Wide variety of sizes including 18 lbs. to 120 lbs. in Natural, Black and other colors to meet your bundling needs
- Available in lengths from 4" (100mm) – 27.5" (700mm)



NATURAL Part No. *	BLACK UV Part No. *	LENGTH		WIDTH		MAXIMUM BUNDLE DIAMETER		MINIMUM LOOP TENSILE	RECOMMENDED HAYATA TOOL	PACKAGING			
		In	mm	In	mm	In	mm			STD. BAG QTY.	STD. CASE QTY. *	BULK BAG QTY. *	BULK CTN. QTY.
STNC100-18	STNC100-18B	4	100	.110	3.0	0.87	22	18	TG-3, TG-7	100	1,000	1,000	25,000
STNC200-18	STNC200-18B	8	201	.100	2.4	2.00	51	18	TG-3, TG-7	100	1,000	1,000	25,000
STNC150-40	STNC150-40B	6	155	.141	3.6	1.38	35	40	TG-3, TG-7	100	1,000	1,000	20,000
STNC200-40	STNC200-40B	8	200	.157	4.0	2.09	53	40	TG-3, TG-7	100	1,000	1,000	10,000
STNC280-40	STNC280-40B	11	284	.142	3.6	3.15	80	40	TG-3, TG-7	100	1,000	1,000	10,000
STNC368-40	STNC368-40B	14.5	368	.142	3.6	4.09	104	40	TG-3, TG-7	100	1,000	1,000	10,000
STNC190-50	STNC190-50B	7.5	190	.188	4.8	1.77	45	50	TG-3, TG-7	100	1,000	1,000	10,000
STNC300-50	STNC300-50B	12	300	.196	5.0	3.00	76	50	TG-3, TG-7	100	1,000	1,000	5,000
STNC380-50	STNC380-50B	15	376	.196	5.0	3.94	100	50	TG-3, TG-7	100	1,000	1,000	5,000
STNC300-120	STNC300-120B	12	300	.275	7.0	3.00	76	120	TG-9	100	1,000	-	-
STNC380-120	STNC380-120B	15	380	.275	7.0	4.00	102	120	TG-9	100	1,000	-	-
STNC460-120	STNC460-120B	18	460	.275	7.0	5.00	127	120	TG-9	100	1,000	-	-
STNC540-120	STNC540-120B	21	540	.275	7.0	6.00	152	120	TG-9	100	1,000	-	-
STNC700-120	STNC700-120B	27.5	700	.275	7.0	8.00	203	120	TG-9	100	1,000	-	-

Sure-Grip Strap Body

- Ribbed and raised for sure grip
- Designed to eliminate movement

Smooth Head Design

- Rounded edges for easy handling
- Low-threading force required
- Faster installation and lower hand fatigue

Curved Tie Tip

- For faster threading
- Easy to pick up

High Tensile Strength

- Exceeds industry standards
- Available from 18 lbs. up to 120 lbs.

*To order Bulk (1,000/Bag):

- NATURAL: add "M" at end of part number (example: STNC100-18M)

- BLACK UV: add "M" before B example: STNC100-18MB

SS Tooth Cable Tie Tension Tools

Part #	Material	Tension Range	Color
TG-3	Metal	18 - 50 Lb	Blue
TG-7	Plastic	120 - 175 Lb	Blue
TG-9	Metal	120 - 175 Lb	Red



Nylon Mounting Hole Ties With Stainless Steel Locking Tooth



Hayata stocks a full line of high tensile strength nylon mounting hole ties that feature a stainless steel locking tooth. These special ties, with a self-locking one-piece design, are used to secure and bundle cables and wires, as well as mount or hang the bundle.



NATURAL Part No.	BLACK UV Part No.	LENGTH		WIDTH		TENSILE STRENGTH	HOLE SIZE		PACKAGING	
		In	mm	In	mm		Imp	Metric	Bag Qty	Case Qty
STNC-MT117-18	STNC-MT117-18B	4.5	117	.094	2.4	18	#4	M2.5	100	1000
STNC-MT211-18	STNC-MT211-18B	8.0	211	.094	2.4	18	#4	M2.5	100	1000
STNC-MT168-40	STNC-MT168-40B	6.5	168	.142	3.6	40	#8	M4	100	1000
STNC-MT216-50	STNC-MT216-50B	8.5	216	.185	4.7	50	#10	M5	100	1000
STNC-MT318-50	STNC-MT318-50B	12.5	318	.185	4.7	50	#10	M5	100	1000
STNC-MT396-50	STNC-MT396-50B	15.5	396	.185	4.7	50	#10	M5	100	1000
STNC-MT394-120	STNC-MT394-120B	15.5	394	.276	7	120	1/4"	M6	100	1000

Metal-Detectable Cable Ties For Food & Beverage Operations



Hayata's metal-impregnated nylon cable ties are designed for use in the food and beverage industry, to help avoid contamination.

- Can be identified by metal detectors
- Helps compliance with USFDA HACCP & EU hygiene standards

Part No.	LENGTH		WIDTH		MAX BUNDLE DIAMETER		TENSILE	PACKAGING		HAYATA INSTALL TOOL
	In	mm	In	mm	In	mm		Bag Qty.	Case Qty.	
HYNT100-18MD	4	100	.10	2.5	0.75	20	18	100	1000	TG-3, TG-7
HYNT150-40MD	6	150	.14	3.6	1.40	36	40			TG-3, TG-7
HYNT200-40MD	8	200	.14	3.6	1.80	46	40			TG-3, TG-7
HYNT200-50MD	8	200	.19	4.8	1.80	46	50			TG-3, TG-7
HYNT300-50MD	12	300	.19	4.8	3.20	81	12			TG-3, KG-7
HYNT380-50MD	14.5	368	.19	4.8	4.20	106	15			TG-3, TG-7
HYNT380-120MD	14.5	368	.30	7.6	4.20	106	15			TG-9

See Page 13

Acetal Cable Ties

Acetal cable ties are made from acetal resin and are known for their high tensile strength. They are resistant to abrasion, chemicals, weather and UV light, making them suitable for outdoor applications. Hayata's Acetal ties are available with a locking mechanism that includes two stainless steel locking barbs for a sure, tight connection when fully engaged. Hayata's Acetal cable ties are easy to install by hand or with a cable tie tool. Available in standard 1/2-in wide x 50-ft rolls or custom pre-cut lengths.



- 1/2" x 50 ft. Roll in Dispenser Box
- Head with Double Stainless Steel Teeth
- Fantastic for use in UV, Chemical, and Moisture Applications
- Custom Pre-cut Lengths Available
- Meets Telcordia TR-TSY-000789

Custom Pre-cut Lengths Available

ACETAL Ties • 250 Lb.+

Part No.	Length / Width	Packaged
ACETAL4	1/2" ACETAL Strap	50 ft. Per Roll

ACETAL Head w/ Stainless Steel Teeth

Part No.	Description	Packaged
ACEHEAD4	1/2" ACETAL Head w/ Stainless Steel Teeth	100 Heads/Bag

To Order: US Toll Free: 877-785-8437 • www.Hayata.com • sales@Hayata.com

Battery Powered Cable Tie Installation Tools

BT-15000 QuikTie™

Battery Powered Cable Tie Tool

Delivering longer-lasting power in a lighter, more compact tool, Hayata's BT15000 QuikTie™ installs both coated and uncoated cable ties ranging in widths from 1/4" to 5/8".

"Delivers uniform tension for each installation, which means constant tensioning for the entire job."

"Offers more control over tension vs. manual tools, lowering risk of damage to the cable jacket."



FEATURES:

- 12-volt Lithium Ion battery delivers 50% longer life,* recharges in 30 minutes and operates at low temperatures (-4°F / 20°C). Two batteries included.
- Low battery indicator
- 10% lighter unit weight* and new hex grip design for easier handling during installations
- Variable torque adjustment – up to 265 lbs.
- Built-in trigger activated work light
- 5:1 productivity ratio advantage over standard tools (20% performance improvement*)
- Easy to use manual cut-off lever
- Offers more control over tension vs. manual tools, lowering risk of damage to the cable jacket

Built-in trigger activated work light for low-light installations

Longer Battery Life

Lighter Overall Weight

* Compared to BT14000

Manual Cable Tie Installation Tools

HAMMERHEAD CT-7 Easy One-hand Operation

Load.
Install.
Tighten.
Repeat.

The Hayata Hammerhead CT-7 manual ratchet tool is designed to make stainless steel cable tie installations more efficient and tooling investments last longer.

- Flat heavy-duty “Hammerhead” nose can be used to hammer down cable tie head or tail if required
- 3-way handle for one or two-handed operation
- Lightweight design reduces installer fatigue
- Easy to load and easy material removal

Hammerhead is Hayata-strong, designed for heavy-duty use and abuse in hard to access areas



Hayata Product Number: CT-7
Weight: 2.45 Lb (1.11 Kg)



CT-5

Manual tool with preset tension adjustment control which can allow for uniform tension setting and automatic cutting on each bundle. Lightweight, which allows one hand operation.

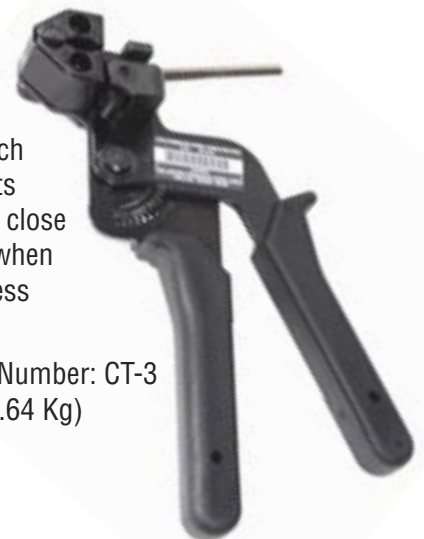
Hayata Product Number: CT-5
Weight: 1.4 Lb (.64 Kg)



CT-3

Manual tool which tensions and cuts steel ties. Offers close cut to the head when removing stainless steel tie tail.

Hayata Product Number: CT-3
Weight: 1.4 Lb (.64 Kg)



CT-4

Tensioning hook tool used with releaseable and ladder stainless steel ties, both coated and uncoated.


Hayata Product Number: CT-4
Weight: 0.1 Lb (.05 Kg)




STAINLESS STEEL BANDING

THE STRONGEST AROUND!

- Resistance to chemicals and salt sprays
- Non-toxic, halogen-free




Hayata's **stainless steel banding** can be used in virtually all indoor, outdoor and underground (including direct burial) applications.



316 grade stainless steel

High strength, non-flammability and rounded edges provide the definitive support for network cables.



Excellent resistance to temperature extremes, corrosion, weather, chemicals, salt sprays and UV radiation.

Coated Banding



Hayata Super Coated Band (Black) 316 SS • 82.5 ft.



COATED Part No.	THICKNESS		WIDTH		WEIGHT		BUCKLE TYPE	BUCKLE TYPE Part No.	PACKAGING
	In	mm	In	mm	Lb	Kg			
CB3162	.048	1.22	1/4	6.35	3	1.4	Wing Seal 316 SS	CBWS3162	10 Rolls Per Box
CB3163	.048	1.22	3/8	9.53	2.75	1.25		CBWS3163	
CB3164	.048	1.22	1/2	12.7	3.75	1.7		CBWS3164	
CB3165	.048	1.22	5/8	15.88	4.4	2		CBWS3165	
CB3166	.048	1.22	3/4	19	5.2	2.36		CBWS3166	

Hayata Application Tools: BT200, RT400, BTX8000

Applications: Marine, Corrosive, Vibration

Approval: DNV Approved, ABS Type Approval, PPA Material available upon request



Hayata Super Coated Band 316 SS • Custom Lengths



COATED Part No.	LENGTH		WIDTH		THICKNESS COATED		MAX BUNDLE DIAMETER		BAG Wt. Lb	PACKAGING		
	In	mm	In	mm	In	mm	In	mm		Ties Per Bag	Bags Per Box	Bag (LxWmm)
CB3165-18WBKL	18	457	5/8	15.88	.048	1.22	4.8	122	1	25	4	380x230
CB3165-24WBKL	24	610	5/8	15.88	.048	1.22	6.7	170	1.3	25	4	380x230
CB3165-30WBKL	30	762	5/8	15.88	.048	1.22	8.6	218	1.6	25	4	510x230

Hayata Application Tools: BT200, RT400, BTX8000

Applications: Marine, Corrosive, Vibration

Approval: DNV Approved, ABS Type Approval, PPA Material available upon request

Marine Coated Banding Kit

The Hayata Marine Coated Banding Kit comes with five rolls of 1/2" or 5/8" banding, five boxes of matching buckles, an RT400 Banding Tool and a Hayata tool box.



Part No.	Size	Includes
MKit-4	1/2"	CB3164 x 5 Rolls, CBWS3164 x 5 Boxes, RT-400 x 1 Tool and Tool Box
MKit-5	5/8"	CB3165 x 5 Rolls, CBWS3165 x 5 Boxes, RT-400 x 1 Tool and Tool Box

To Order: US Toll-Free: 833-862-1668 • www.Hayata.com • sales@Hayata.com

Stainless Steel Banding



All coated bands are 316 grade stainless steel for excellent resistance to temperature extremes, corrosion, weather, chemicals, salt sprays and UV radiation.



- Resistance to chemicals and salt sprays
- Non-toxic, halogen-free
- DNV Approved



Hayata Super Band • 201 SS • 100 ft.

Part No.	THICKNESS		WIDTH		WEIGHT		BUCKLE TYPE	BUCKLE TYPE Part No.	TENSILE STRENGTH	PACKAGING
	In	mm	In	mm	Lb	Kg				
SB2012	.020	0.51	1/4	6.35	1.7	0.77	Tiger Teeth Wing Seal Screw Buckle 201 SS	TB2002, WS2012	475	5 Rolls Per Box
SB2013	.025	0.63	3/8	9.53	3.2	1.45		TB2003, WS2013, SBU2013	1,040	
SB2014	.030	0.76	1/2	12.7	5.1	2.3		TB2004, WS2014, SBU2014	1,710	
SB2015	.030	0.76	5/8	15.88	6.4	2.9		TB2005, WS2015	1,940	
SB2016	.030	0.76	3/4	19.05	7.7	3.5		TB2006, WS2016, SBU2016	2,290	
SB2016-020	.020	0.51	3/4	19.05	5.1	2.31		TB2006, WS2016, SBU2016	1,275	

Hayata Application Tools: BT200, **JR100, TT2400, PT500, RT400, BTX8000

Applications: General Fastening Applications and Utility Poles Cable

Approval: DNV Approved, ABS Type Approval



See Page 30
for Buckles and
Wing Seals



Hayata Tough Band • 316 SS • 100 ft.

Part No.	THICKNESS		WIDTH		WEIGHT		BUCKLE TYPE	BUCKLE TYPE Part No.	TENSILE STRENGTH	PACKAGING
	In	mm	In	mm	Lb	Kg				
S3162	.020	0.51	1/4	6.35	1.7	0.77	Tiger Teeth 316 SS	TB3162	450	5 Rolls Per Case
SB3163	.025	0.63	3/8	9.53	3.2	1.45		TB3163	800	
SB3164	.030	0.76	1/2	12.7	5.1	2.31		TB3164	1,450	
SB3165	.030	0.76	5/8	15.88	6.4	2.9		TB3165	1,700	
SB3166	.030	0.76	3/4	19.05	7.7	3.5		TB3166	2,100	
SB3165-015	.015	0.38	5/8	15.88	7.0	3.18		TB3165	880	
SB3165-020	.020	0.51	5/8	15.88	6.4	2.9		TB3165	1,000	
SB3165-015-2*	.015	0.38	5/8	15.88	7.0	3.18		TB3165	880	

*200-ft roll length

Hayata Application Tools: BT200, **JR100, TT2400, PT500, RT400, BTX8000

Applications: Corrosive Fastening Applications, Marine

Approval: DNV Approved, ABS Type Approval

**JR100 only works with 1/4" and 3/8" banding

Stainless Steel Banding



See Page 30
for Buckles and
Wing Seals

Hayata Giant Band • 201 SS • 100 ft.



Part No.	THICKNESS		WIDTH		WEIGHT		BUCKLE TYPE	BUCKLE TYPE Part No.	TENSILE STRENGTH	PACKAGING
	In	mm	In	mm	Lb	Kg				
GB2016	.44	1.12	3/4	19.05	11.6	5.3	Heavy Duty 201 SS	HDB6	3,300	10 Rolls Per Case
GB2017	.44	1.12	1	25.4	13.7	6.2		HDB7	4,500	
GB2018	.44	1.12	1-1/4	31.75	17.2	7.8		HDB8	5,400	

Hayata Application Tools: GT6000

Applications: Utility Poles, Heavy Duty Applications

Approval: DNV Approved



Hayata Lite Band • 300SS • 100 ft.



Part No.	THICKNESS		WIDTH		WEIGHT		BUCKLE TYPE	BUCKLE TYPE Part No.	TENSILE STRENGTH	PACKAGING
	In	mm	In	mm	Lb	Kg				
LB300153	.015	0.38	3/8	9.53	2.2	1	Tiger Teeth Wing Seal Screw Buckle 201 SS 304 SS 316 SS	TB2003, WS2013, SBU2013		5 Rolls Per Case
LB300154	.015	0.38	1/2	12.7	2.9	1.3		TB2004, WS2014, SBU2014		
LB300155	.015	0.38	5/8	15.88	3.6	1.6		TB2005, WS2015		
LB300156	.015	0.38	3/4	19.05	6.1	2.8		TB2006, WS2016, SBU2016		
LB300203	.020	0.51	3/8	9.53	2.8	1.2		TB2003, WS2013, SBU2013	600	
LB300204	.020	0.51	1/2	12.7	3.8	1.7		TB2004, WS2014, SBU2014	850	
LB300205	.020	0.51	5/8	15.88	4.8	2.25		TB2005, WS2015	1000	
LB300206	.020	0.51	3/4	19.05	5.7	2.6		TB2005, WS2015	1250	
LB300253	.025	0.63	3/8	9.53	3.2	1.5		TB2003, WS2013, SBU2013		
LB300254	.025	0.63	1/2	12.7	4.6	2.1		TB2004, WS2014, SBU2014	1000	
LB300255	.025	0.63	5/8	15.88	6.1	2.8		TB2005, WS2015	1250	
LB300256	.025	0.63	3/4	19.05	6.8	3.1		TB2006, WS2016, SBU2016	1590	

Hayata Application Tools: BT200, **JR100, TT2400, PT500, RT400, BTX8000

Applications: Lite Duty Applications, Cable, Signs, Strapping Insulation

Approval: DNV Approved

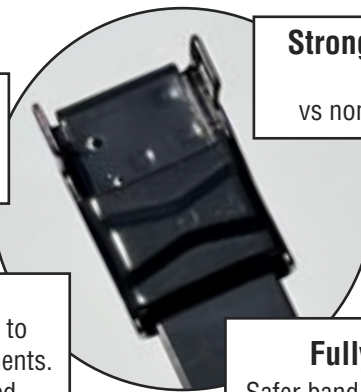
**JR100 only works with 1/4" and 3/8" banding

Coated Stainless Steel Bands

Hayata's highly durable coated stainless steel bands are the **safest, strongest and easiest to install** on the market. Our bands are designed to withstand extreme weather and temperature conditions, corrosion, physical force, chemicals and UV. Our new welded wing buckles add an estimated 50 lbs. more strength and keeps the buckles from sliding off pre-assembled bands during shipping and installation.

Hayata's stainless steel bands are fully coated including the band sides and buckles. This makes the banding application safer by preventing injuries associated with handling. Available in 13 colors and uncoated, Hayata bands resist fading and corrosion due to extreme weather/temperature environments.

Hayata's highly durable coated stainless steel cable bands are a great option for high volume marking and maintenance operations. These fully coated bands resist fading due to weather and harsh environments.



Welded Wing Head
Buckle's won't slip/slide in transport.

Stronger Winged Buckle
50-lbs stronger vs non-welded wing buckle.

Color I.D.
Durable, robust coating to withstand harsh environments. 13 colors plus uncoated stainless steel.

Fully Coated Band
Safer band application/handling by preventing hand & arm injuries.

- Reduces banding time and labor costs with welded wing buckle
- Safer and Easier handling & band installation vs. bands that are not fully-coated
- Reduces banding time and labor costs with welded wing buckle
- High tensile strength exceeds oil and gas industry standards
- Durable Hayata coating on stainless steel tie band
- High tensile strength exceeds industry standards

Part No.	LENGTH		WIDTH		THICKNESS		PACKAGING
	In	mm	In	mm	In	mm	
FBX18WS	18	457	1/2	12.7	.025	.635	100 Per Box
FBX24WS	24	610	1/2	12.7	.025	.635	
FBX30WS	30	762	1/2	12.7	.025	.635	

Hayata Application Tools:
RT400
TT2400
BT200

COLORS / ORDER SUFFIX	Black - BK	Green - GN	Stainless Steel - SS
	Blue - BE	Grey - GY	Tan - TN
	Brown - BN	Orange - OE	White - WE
	Light Blue - LB	Pink - PK	Yellow - YW
	Glossy Green - GG	Purple - PE	
		Red - RD	

Installation Tools
Pages 31-32

100-ft Color Rolls available if minimums met



Coated Stainless Steel Center Punch Bands



Hayata's highly durable coated stainless steel Center Punch Bands are designed to withstand extreme weather and temperature conditions, corrosion, physical force, chemicals and UV.

Hayata's stainless steel Center Punch Bands are available in 13 colors plus uncoated, and resist fading and corrosion due to extreme weather/temperature environments.

Highly Durable Stainless Steel Band

Superior Buckle Design Delivers Higher Tensile Strength

Color I.D.
Durable, robust coating to withstand harsh environments. 13 colors plus uncoated stainless steel.

Fully Coated Band
Safer band application/handling by preventing hand & arm injuries.

- Safer and Easier handling & band installation vs. bands that are not fully-coated
- High tensile strength exceeds oil and gas industry standards
- Durable Hayata coating on stainless steel band
- High tensile strength exceeds industry standards

Part No.	LENGTH		WIDTH		THICKNESS		PACKAGING
	In	mm	In	mm	In	mm	
FBX18CP	18	457	1/2	12.7	.025	.635	100 Per Box
FBX24CP	24	610	1/2	12.7	.025	.635	
FBX30CP	30	762	1/2	12.7	.025	.635	

COLORS /	Black - BK	Grey - GY	Stainless Steel - SS
ORDER	Blue - BE	Orange - OE	Tan - TN
SUFFIX	Brown - BN	Pink - PK	White - WE
	Light Blue - LB	Purple - PE	Yellow - YW
	Glossy Green - GG	Red - RD	

Punch Tool

Allows for tensioning and punch locking band.
Hayata Product Number: PT500
Weight: 3.4 Lb (1.5 Kg)



Center Punch Clamps



Hayata's highly durable coated stainless steel center punch clamps are the best option for hose applications where long-term usage is not mission-critical.

- Clamps are easily locked in place by hammer impact or by using Hayata's specialized Punch Tool. (Hayata Part # PT500)
- Double-wrapped 201 Stainless Steel band with stainless steel buckle for the strongest locking system.
- Not recommended for fittings that could be subject to cracking due to impact, excess tension or poly fittings.



Part No.	WIDTH		THICKNESS		INSIDE DIAMETER		PACKAGE QUANTITY
	In	mm	In	mm	In	mm	
CPPFC25D	0.625	15.9	0.025	.064	1.00	25	100/box
CPPFC32D	0.625	15.9	0.025	.064	1.25	32	100/box
CPPFC38D	0.625	15.9	0.025	.064	1.50	38	100/box
CPPFC44D	0.625	15.9	0.025	.064	1.75	44	100/box
CPPFC51D	0.625	15.9	0.025	.064	2.00	51	100/box
CPPFC57D	0.625	15.9	0.025	.064	2.25	57	100/box
CPPFC64D	0.625	15.9	0.025	.064	2.50	64	50/box
CPPFC70D	0.625	15.9	0.025	.064	2.75	70	50/box
CPPFC76D	0.625	15.9	0.025	.064	3.00	76	50/box
CPPFC89D	0.625	15.9	0.025	.064	3.50	89	50/box
CPPFC102D	0.625	15.9	0.025	.064	4.00	102	25/box
CPPFC114D	0.625	15.9	0.025	.064	4.50	114	25/box
CPPFC127D	0.625	15.9	0.025	.064	5.00	127	25/box
CPPFC152D	0.625	15.9	0.025	.064	6.00	152	25/box
CPPFC165D	0.625	15.9	0.025	.064	6.50	165	25/box
CPPFC178D	0.625	15.9	0.025	.064	7.00	178	25/box
CPPFC203D	0.625	15.9	0.025	.064	8.00	203	25/box

Punch Tool

Allows for tensioning and punch locking band.

Hayata Product Number: PT500

Weight: 3.4 Lb (1.5 Kg)



Stainless Steel SUPER COATED Banding



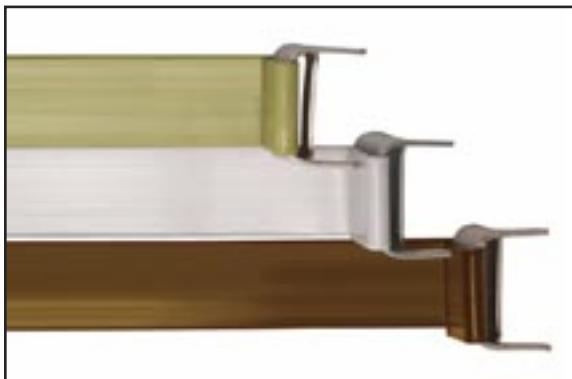
**Hayata Super Coated Band (Colors)
316/304 SS • 82.5 ft.**



COATED 316SS Part No.	COATED 304SS Part No.	THICKNESS		WIDTH		WEIGHT		BUCKLE TYPE	BUCKLE TYPE Part No.	PACKAGING
		In	mm	In	mm	Lb	Kg			
CB3164*	CB3044*	.048	1.22	1/2	12.7	3.75	1.7	Wing Seal	CBWS3164	10 Per Case
CB3165*	CB3045*	.048	1.22	5/8	15.88	4.4	2	316 SS	CBWS3165	

Hayata Application Tools: BT200, RT400, BTX8000
Applications: Marine, Corrosive, Vibration
Approval: DNV Approved, ABS Type Approval

Contact Hayata Customer Service
with Color Request.



**Hayata Super Coated Band
Custom Lengths (Colors) INT'L
316 SS**



COATED Part No.	LENGTH		WIDTH		THICKNESS COATED		MAX BUNDLE DIAMETER		BAG Wt.		PACKAGING	
	In	mm	In	mm	In	mm	In	mm	Lb	Kg	Bands Per Bag/Set	Bags/Sets Per Box
CB3165-300*	11.8	300	5/8	15	.045	1.15	2.75	70	1.0	0.45	20	15
CB3165-400*	15.7	400	5/8	15	.045	1.15	3.5	88	1.1	0.50	20	15
CB3165-500*	19.6	500	5/8	15	.045	1.15	4	102	1.5	0.68	20	15
CB3165-600*	23.6	600	5/8	15	.045	1.15	5	127	1.8	0.81	20	15
CB3165-700*	27.5	700	5/8	15	.045	1.15	6	152	2.1	0.95	20	15
CB3165-1000*	39.3	1000	5/8	15	.045	1.15	9	229	3.0	1.36	20	15

Hayata Application Tools: BT200, RT400, BTX8000
Applications: Marine, Corrosive, Vibration
Approval: DNV Approved, ABS Type Approval

*Part Number listed is for **Black** bands.
 Add suffix to denote color:
 White - WE, Green - GN, Grey - GY, Tan - TN.
 Example: CB3165-300WE for White

Stainless Steel GALVANIZED Banding



Hayata Galvanized Band 82.5 ft. (25 M)

Part No.	THICKNESS		WIDTH		WEIGHT		BUCKLE TYPE	BUCKLE TYPE Part No.	PACKAGING
	In	mm	In	mm	Lb	Kg			
GAL5	.02	0.4	5/8	15	4.4	2	Wing Seal	CBWS3165	10 Per Case
CGAL5*(coated)	0.045	1.15	5/8	15	4.4	2	316 SS		

Hayata Application Tools: RT400, BT200, BT8000
Applications: Marine, Corrosive, Vibration

*CGAL5 is the part no. for Black coated band. Add suffix to denote color: White - WE, Green - GN, Grey - GY, Tan - TN. Example: CGAL5WE for White



Hayata Galvanized Band Custom Lengths

Part No.	LENGTH		WIDTH		THICKNESS COATED		MAX BUNDLE DIAMETER		WEIGHT		PACKAGING	
	In	mm	In	mm	In	mm	In	mm	Lb	Kg	Bands Per Bag/Set	Bags/Sets Per Box
GAL5-300	11.8	300	.045	1.15	5/8	15	2.75	70	1.0	0.45	20	15
GAL5-400	15.7	400	.045	1.15	5/8	15	3.5	88	1.1	0.50	20	15
GAL5-500	19.6	500	.045	1.15	5/8	15	4	102	1.5	0.68	20	15
GAL5-600	23.6	600	.045	1.15	5/8	15	5	127	1.8	0.81	20	15
GAL5-700	27.5	700	.045	1.15	5/8	15	6	152	2.1	0.95	20	15
GAL5-1000	39.3	1000	.045	1.15	5/8	15	9	229	3.0	1.36	20	15

Hayata Application Tools: BT200, TT2400, RT400, BTX8000
Applications: Marine, Corrosive, Vibration



Hayata COATED Galvanized Band Custom Lengths

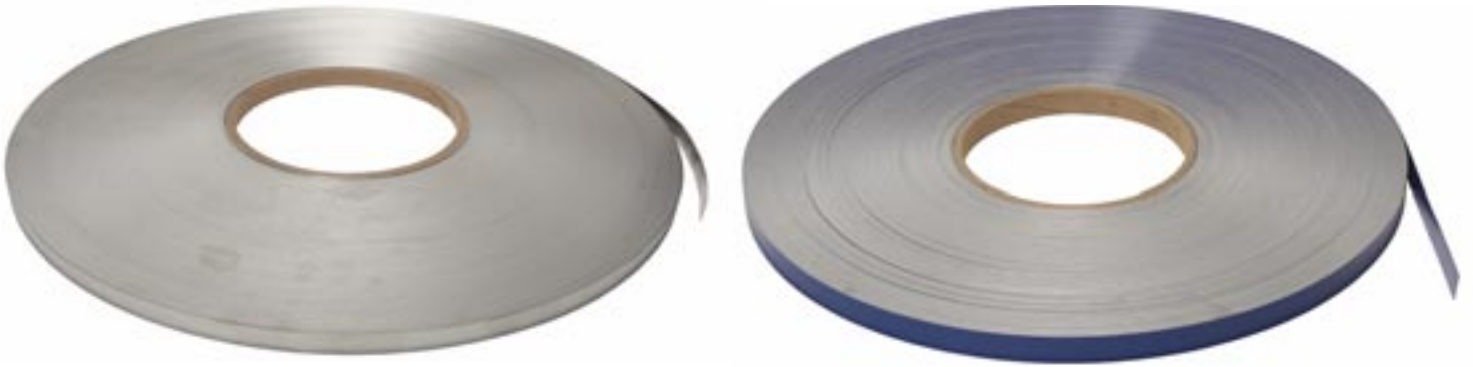


COATED Part No.	LENGTH		WIDTH		THICKNESS COATED		MAX BUNDLE DIAMETER		BAG Wt.		PACKAGING	
	In	mm	In	mm	In	mm	In	mm	Lb	Kg	Bands Per Bag/Set	Bags/Sets Per Box
CGAL5-300*	11.8	300	.045	1.15	5/8	15	2.75	70	1.0	0.45	20	15
CGAL5-400*	15.7	400	.045	1.15	5/8	15	3.5	88	1.1	0.50	20	15
CGAL5-500*	19.6	500	.045	1.15	5/8	15	4	102	1.5	0.68	20	15
CGAL5-600*	23.6	600	.045	1.15	5/8	15	5	127	1.8	0.81	20	15
CGAL5-700*	27.5	700	.045	1.15	5/8	15	6	152	2.1	0.95	20	15
CGAL5-1000*	39.3	1000	.045	1.15	5/8	15	9	229	3.0	1.36	20	15

Hayata Application Tools: BT200, RT400, BTX8000
Applications: Marine, Corrosive, Vibration

*Part no. listed is for Black bands. Add suffix to denote color: White - WE, Green - GN, Grey - GY, Tan - TN. Example: CGAL5-300WE for White

Stainless Steel INSULATION Banding



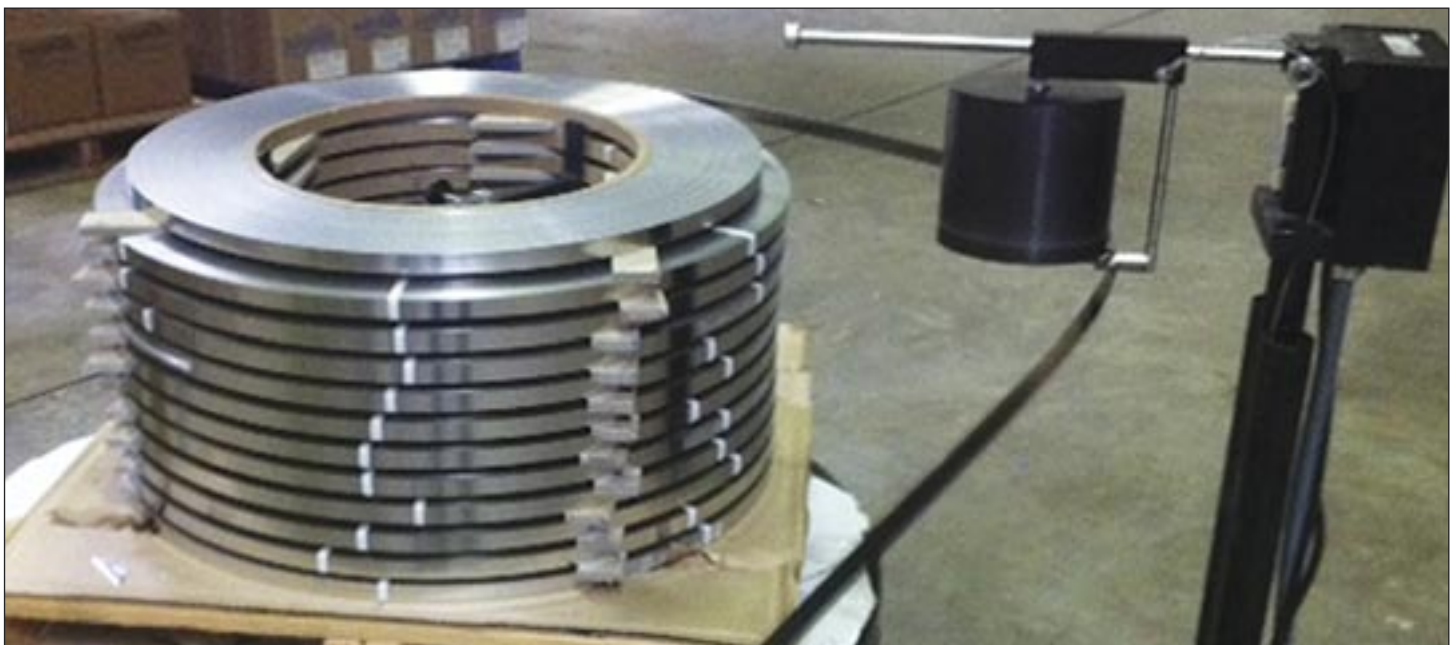
Hayata Insulation Banding • 304 SS • 900 ft.

UNCOATED Part No.	COATED Part No.	THICKNESS		WIDTH		WEIGHT	
		In	mm	In	mm	Lb	Kg
INS3043-020	—	0.020	0.63	3/8"	10	22	10
INS3044-020	INS3044-020BL	0.020	0.63	1/2"	13	30	13.6
INS3046-020	INS3046-020BL	0.020	0.63	3/4"	19	44	20

Also available as 100 lb. oscillate coils.

Hayata Insulation Wing Seals

Part No.	WIDTH		WEIGHT		PACKAGING
	In	mm	Lb	Kg	
INSW3043	1/2	13	1	0.5	1000 Per Box
INSW3044	3/4	19	1.3	0.6	



MONEL® Banding



Hayata Monel® Banding
Monel 400 • 100 ft.

Part No.	THICKNESS		WIDTH		WEIGHT		PACKAGING
	In	mm	In	mm	Lb	Kg	
MON3	0.025	0.63	3/8	10	3.7	1.7	5 Per Case
MON4	0.030	0.76	1/2	13	5.1	2.4	
MON5	0.030	0.76	5/8	16	7.7	3.5	
MON6	0.030	0.76	3/4	19	7.7	3.6	

**See Page30
for Buckles and
Wing Seals**

Monel® and Inconel® are registered trademarks of Special Metals, a division of Precision Castparts Corp. (PCC)

Call for Inconel® 625 Quotes

Hayata All Purpose Coated Banding

316 SS • 82.5 ft.

COATED Part No.	THICKNESS		WIDTH		WEIGHT		HOLE SIZE		PACKAGING Per Case
	In	mm	In	mm	Lb	Kg	In	mm	
APCB5	.050	1.3	5/8	15.8	4	1.8	9/32	7	10

All purpose banding can be mounted with bolts, screws and nails depending upon the application.



Banding Tote Plastic Carrying Case

Part No.	THICKNESS		WIDTH		COLOR
	In	mm	In	mm	
YTOTE	1/2	12.7	0.29	0.13	Yellow
GTOTE	5/8	15.88	0.29	0.13	Gray
BTOTE	3/4	19	0.29	0.13	Blue

Stainless Steel COATED FIX Banding



Hayata Coated Fix Band
1/2" • 201 SS

UNCOATED Part No.	COATED Part No.	LENGTH		WIDTH		THICKNESS UNCOATED		THICKNESS COATED		BUNDLE DIAMETER		BAG Wt. lbs	PACKAGING		
		In	mm	In	mm	In	mm	In	mm	In	mm		Ties Per Bag	Bags Per Box	Bag (LxWmm)
FBX300	FBX300C	12	300	1/2	12.5	0.02	0.38	0.02	0.5	3.2	82	3.3	100	5	500x230
FBX400	FBX400C	15.75	400	1/2	12.5	0.02	0.38	0.02	0.5	4.5	114	4.2	100	5	500x230
FBX500	FBX500C	19.5	500	1/2	12.5	0.02	0.38	0.02	0.5	5.7	146	5.3	100	5	600x230
FBX650	FBX650C	25.5	650	1/2	12.5	0.02	0.38	0.02	0.5	7.6	192	6.8	100	5	750x230
FBX850	FBX850C	33.5	850	1/2	12.5	0.02	0.38	0.02	0.5	10	256	8.8	100	5	910x230
FBX1050	FBX1050C	41	1050	1/2	12.5	0.02	0.38	0.02	0.5	12.6	320	11	100	5	1200x230

Hayata Application Tools: TT2400, RT400, BT200, BTX8000

Applications: Corrosive, Vibration, Utility Poles, General Bundling Application

Cut-to-length banding with buckles or wing seals pre-installed (welded) for faster installation and increased strength.

Made to order in a variety of coating colors for easy identification. **Call for lead time.**



Hayata Coated Fix Band
3/4" • 201 SS

UNCOATED Part No.	COATED Part No.	LENGTH		WIDTH		THICKNESS UNCOATED		THICKNESS COATED		BUNDLE DIAMETER		BAG Wt. lbs	PACKAGING		
		In	mm	In	mm	In	mm	In	mm	In	mm		Ties Per Bag	Bags Per Box	Bag (LxWmm)
FBX300XH	FBX300XHC	12	300	3/4	19	0.03	0.8	0.04	0.92	3.2	82	9.4	100	5	500x300
FBX400XH	FBX400XHC	15.75	400	3/4	19	0.03	0.8	0.04	0.92	4.5	114	12.5	100	5	500x300
FBX500XH	FBX500XHC	19.5	500	3/4	19	0.03	0.8	0.04	0.92	5.7	146	15.8	100	5	600x300
FBX650XH	FBX650XHC	25.5	650	3/4	19	0.03	0.8	0.04	0.92	7.6	192	20.5	100	5	750x300
FBX850XH	FBX850XHC	33.5	850	3/4	19	0.03	0.8	0.04	0.92	10	256	27.5	100	5	910x300
FBX1050XH	FBX1050XHC	41	1050	3/4	19	0.03	0.8	0.04	0.92	12.6	320	33	100	5	1200x300

Hayata Application Tools: TT2400, RT400, BT200, BTX8000

Applications: Marine, Corrosive, Vibration, Utility Poles

Cut-to-length banding with buckles or wing seals pre-installed (welded) for faster installation and increased strength.

Made to order in a variety of coating colors for easy identification. **Call for lead time.**

Stainless Steel COATED FIX Banding



Hayata Coated Fix Band
5/8" • 316 SS

UNCOATED Part No.	COATED Part No.	LENGTH		WIDTH		THICKNESS UNCOATED		THICKNESS COATED		BUNDLE DIAMETER		BAG Wt. lbs	PACKAGING		
		In	mm	In	mm	In	mm	In	mm	In	mm		Ties Per Bag	Bags Per Box	Bag (LxWmm)
FBX300X	FBX300XC	12	300	5/8	16	0.02	0.38	0.02	0.5	3.2	82	4.2	100	5	500x300
FBX400X	FBX400XC	15.75	400	5/8	16	0.02	0.38	0.02	0.5	4.5	114	5.3	100	5	500x300
FBX500X	FBX500XC	19.5	500	5/8	16	0.02	0.38	0.02	0.5	5.7	146	6.8	100	5	600x300
FBX650X	FBX650XC	25.5	650	5/8	16	0.02	0.38	0.02	0.5	7.6	192	8.8	100	5	750x300
FBX850X	FBX850XC	33.5	850	5/8	16	0.02	0.38	0.02	0.5	10	256	11.2	100	5	910x300
FBX1050X	FBX1050XC	41	1050	5/8	16	0.02	0.38	0.02	0.5	12.6	320	14	100	5	1200x300

Hayata Application Tools: TT2400, RT400, BT200, BTX8000

Applications: Marine, Corrosive, Vibration, Utility Poles

Cut-to-length banding with buckles or wing seals pre-installed (welded) for faster installation and increased strength.

Made to order in a variety of coating colors for easy identification. **Call for lead time.**

Anti-Vibration / Insulation Sleeve

100 ft.

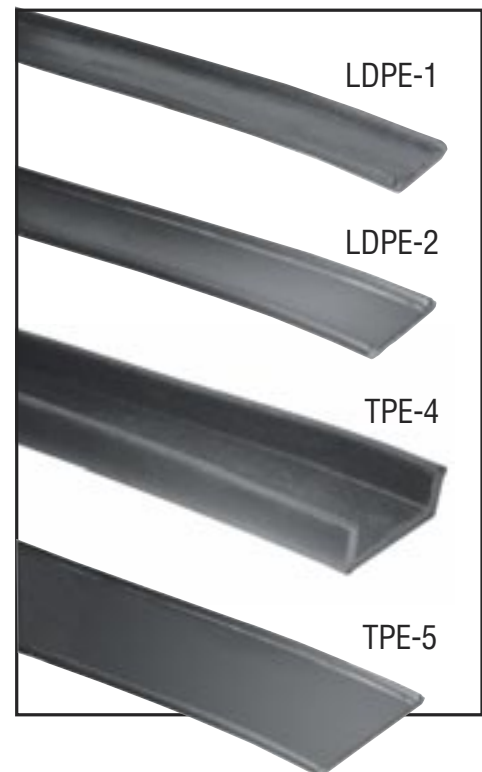
- Insulation
- Anti-Vibration
- Improve Gripping
- Separation of dissimilar metals
- Added Bundle Protection

Part No.	THICKNESS		FOR STEEL BAND WIDTHS	
	In	mm	In	mm
LDPE-1	0.05	1.2	3/16, 1/4, 5/16	4.76 thru 7.9
LDPE-2	0.05	1.2	3/8 thru 1/2	9.5 thru 12.7
TPE-4	0.09	2.2	1/2 thru 3/4	12.7 thru 19.05
TPE-5	0.07	2.00	5/8 thru 3/4	15.8 thru 20

Can be used with both stainless steel ties and stainless steel banding.

LDPE Material: Food contact acceptable, impact and stress-crack resistant for industrial applications.

TPE Material: Low smoke, flame retardant, halogen-free, good UV and chemical protection.



Buckles and Wing Seals

Tiger Teeth Buckles 201 SS



Part No.	WIDTH		WEIGHT		PACKAGING
	In	mm	Lb	Kg	
TB2002	1/4	6.35	0.3	0.1	100 Box
TB2003	3/8	9.53	0.8	0.3	
TB2004	1/2	12.7	2.1	0.9	
TB2005	5/8	15.88	2.4	1	
TB2006	3/4	19.05	3.7	1.7	



Tiger Teeth Buckles 316 SS



Part No.	WIDTH		WEIGHT		PACKAGING
	In	mm	Lb	Kg	
TB3162	1/4	6.35	0.3	0.1	100 Box
TB3163	3/8	9.53	0.8	0.3	
TB3164	1/2	12.7	2.1	0.9	
TB3165	5/8	15.88	2.4	1	
TB3166	3/4	19.05	3.7	1.7	



Heavy Duty Buckles for Giant Banding 201 SS



Part No.	WIDTH		WEIGHT		PACKAGING
	In	mm	Lb	Kg	
HDB6	3/4	19.05	1.8	0.8	25 Box
HDB7	1	25.4	2.4	1.1	
HDB8	1-1/4	31.75	3.2	1.5	



Wing Seals 201 SS



Part No.	WIDTH		WEIGHT		PACKAGING
	In	mm	Lb	Kg	
WS2012	1/4	6.35	0.4	0.9	100 Box
WS2013	3/8	9.53	0.5	0.2	
WS2014	1/2	12.7	0.9	0.4	
WS2015	5/8	15.88	1	0.5	
WS2016	3/4	19.05	1.1	0.5	



Wing Seals for Coated Band 316 SS



Part No.	WIDTH		Weight		PACKAGING
	In	mm	Lb	Kg	
CBWS3162 (A)	1/4"	6.35	0.5	0.2	100 Box
CBWS3163 (A)	3/8"	9.53	0.6	0.3	
CBWS3164 (B)	1/2"	12.70	1	0.5	
CBWS3165 (B)	5/8"	15.88	1.1	0.5	
CBWS3166 (A)	3/4	19.05	1.3	0.6	



Screw Buckles 201 SS



Part No.	WIDTH		WEIGHT		PACKAGING
	In	mm	Lb	Kg	
SBU2012	1/4	6.35	0.63	0.28	100 Box
SBU2013	3/8	9.53	0.88	0.4	
SBU2014	1/2	12.7	2.13	0.97	
SBU2015	5/8	15.88	2.5	1.14	
SBU2016	3/4	19	3.75	1.7	



Municipal Operations

Hayata's stainless steel banding is designed for anything a municipal operation wants to strap to a pole or other fixed object including signage, traffic lights, flow monitoring sensors, communications devices and security cameras.

This strong durable banding offers excellent resistance to:


- Temperature & weather extremes
- Corrosion
- Chemicals
- Salt spray
- UV radiation



Hayata's stainless steel banding is designed for this kind of work!

Hayata Super Band • 201 SS • 100 ft.



Part No.	THICKNESS		WIDTH		WEIGHT		BUCKLE TYPE	BUCKLE TYPE Part No.	TENSILE STRENGTH	PACKAGING
	In	mm	In	mm	Lb	Kg				
SB2012	.020	0.51	1/4	6.35	1.7	0.77	Tiger Teeth Wing Seal Screw Buckle 201 SS 	TB2002, WS2012	475	5 Rolls Per Box
SB2013	.025	0.63	3/8	9.53	3.2	1.45		TB2003, WS2013, SBU2013	1,040	
SB2014	.030	0.76	1/2	12.7	5.1	2.3		TB2004, WS2014, SBU2014	1,710	
SB2015	.030	0.76	5/8	15.88	6.4	2.9		TB2005, WS2015	1,940	
SB2016	.030	0.76	3/4	19.05	7.7	3.5		TB2006, WS2016, SBU2016	2,290	
SB2016-020	.020	0.51	3/4	19.05	5.1	2.31		TB2006, WS2016, SBU2016	1,275	

Hayata Giant Band • 201 SS • 100 ft.

Part No.	THICKNESS		WIDTH		WEIGHT		BUCKLE TYPE	BUCKLE TYPE Part No.	TENSILE STRENGTH	PACKAGING
	In	mm	In	mm	Lb	Kg				
GB2016	.44	1.12	3/4	19.05	11.6	5.3	Heavy Duty 201 SS	HDB6	3,300	10 Rolls Per Case
GB2017	.44	1.12	1	25.4	13.7	6.2		HDB7	4,500	
GB2018	.44	1.12	1-1/4	31.75	17.2	7.8		HDB8	5,400	



Tough Tool

Hayata Product #: TT2400



Ratchet Tool

Hayata Product #: RT400



BT-200

Easy One-Handed Operation

Sign Brackets

Hayata's highly durable sign brackets and hardware accessories are designed to match the multiple installation requirements of municipal operations.

Brackets are available in high-strength 201 stainless steel or galvanized to match your weather environment.



Straight Sign Bracket

Part No.	WEIGHT (oz)	PACKAGING	MATERIAL
SB-1/7	7.3	50 Box	201
SB-1/7G	7.3	50 Box	Galvanized



Flared Sign Bracket

Part No.	WEIGHT (oz)	PACKAGING	MATERIAL
FSB-1/7	7.6	50 Box	201
FSB-1/7G	7.6	50 Box	Galvanized



Bolt/Washer for Sign

Part No.	WEIGHT (oz)	PACKAGING
BW-1/7	1.7	50 Box



Bolt Clamp

Part No.	WEIGHT (oz)	PACKAGING	MATERIAL
BC-6	16	25 Box	Aluminum housing, 5/8"-6" carriage bolt
BC-8	18	25 Box	Aluminum housing, 5/8"-8" carriage bolt

Snap Screw Clamp

201 Part No.	304 Part No. *	LENGTH		MIN. DIAMETER		MAX DIAMETER		PACKAGING
		In	mm	In	mm	In	mm	
SSC254-2	SSC254-4	32.69	830	2.31	59	10	254	100 Box
SSC311-2	SSC311-4	39.75	1009	2.31	59	12.25	311	
SSC381-2	SSC381-4	48.38	1229	1.63	41	15	381	
SSC413-2	SSC413-4	52.31	1328	1.81	46	16.25	413	
SSC470-2	SSC470-4	59.38	1508	1.63	41	18.5	470	
SSC508-2	SSC508-4	64.13	1628	2.31	59	20	508	



Battery-Powered Banding Installation Tools

BTX-8000

Battery Powered Banding Tool

Hayata introduced the first battery-powered banding tool on the market. Today, the NEW **BTX-8000** carries on this innovative tradition by making the installation of coated or uncoated 1/4" to 3/4" bands easier than ever!

FEATURES:

- 18-volt Lithium Ion battery delivers longer life,* recharges in 30 minutes and operates at low temperatures (-4°F / 20°C). (Two batteries included.) Low battery indicator.
- Lighter unit weight* and new hex grip design for easier handling during installations
- Delivers uniform tension for each installation for consistent tensioning for the entire job
- Offers more control over tension vs. manual tools, lowering risk of damage to the cable jacket
- Variable torque adjustment – up to 480 lbs.
- Built-in trigger activated work light
- 5:1 productivity ratio advantage over standard tools
- Easy to use manual cut-off lever



* Compared to BTX7000

Manual Banding Installation Tools



Punch Tool

Allows for tensioning and punch locking band.

Hayata Product Number: PT500

Weight: 3.4 Lb (1.5 Kg)



Push Bar Tensioner

Can be used with "Closed Seals" for 3/8" - 3/4" x .020 (max. thickness) steel banding. Great for use with round, irregular, or non-compressible packages.

Hayata Product Number: PB6-020

Weight: 3 Lb (1.4 Kg)



JR Tool

Can be used on 1/4" to 3/8" wide band and free end clamps. This tool tensions and cuts.

Hayata Product Number: JR100 • Weight: 1.1 Lb (2 Kg)

Manual Banding Installation Tools

BT-200

The Hayata BT-200 stainless steel ratchet banding tool is designed to make manual installations more efficient and reduce worker fatigue. This super durable tools features an extra long nose for hard to access areas and extra tightening leverage.

- Extra long nose for hard to access areas and added tightening leverage.
- 3-way handle for one or two-handed operation
- Lightweight design reduces installer fatigue
- Easy to load and easy material removal

**Easy
One-hand
Operation**



The BT-200 is Hayata-strong, designed for heavy-duty use and abuse in hard to access areas.



Tough Tool

This tensioning tool with built-in cutter provides up to 2400 lbs. of tension and can be used on free-end clamps, fix band and coated band.

Powder coat finish helps protect tool from corrosion.



Hayata Product Number: TT2400
Weight: 4.5 Lb (2 Kg)

Ratchet Tool

This Ratchet tool to be used with coated and uncoated stainless steel banding. Longer ratchet lever allows for manual tensioning to the desired amount. To cut off excess strap push the shorter ratchet lever downward. Hayata Product Number: RT400
Weight: 3 Lb (1.4 Kg)



Gorilla Tool

When the Tough Tool is not enough, the Gorilla Tool is designed for heavy-duty applications where up to 6000 lbs. of torque may be required.



Hayata Product Number: GT6000
Weight: 11 Lb (5 Kg)

TAGGING OPERATIONS

MARK IT. TAG IT. TRACK IT.



Embossed tags are the best choice for easy, long-term identification.

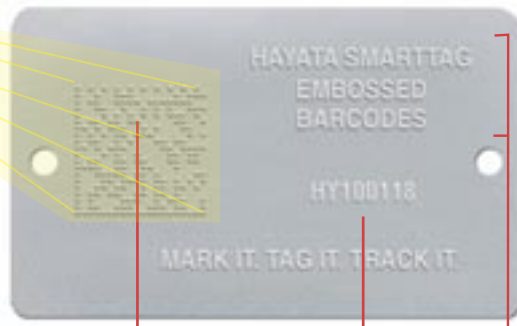
Embossed stainless steel tags can be read long-term no matter how harsh the operating conditions. This is why the military uses embossed dog tags.

- Stamped or engraved tag character channels can get filled in with dirt and grime and are difficult to clean out.
- Silk screened tags are easily scratched, painted and eventually fade.
- If stamped, engraved or silk-screened tags are painted by careless workers, they become illegible. Embossed tags that are painted are still legible.

IDEAL FOR:

- Cable/hose tags
- Tags for galvanized or heat-treated processes
- Inventory/asset control & tracking tags for harsh environments
- Serial number tags
- Military ID tags
- Work-in-progress & VIN plates
- Automotive body & VIN plates

Typical 2D Plate Elements



2D Embossed Barcode - MATRIX

Coded Data

General Embossed Info

- SmartTag™ 4500 & 1100 2D algorithms are industry standard
- Standard barcode readers readily available
- Hayata recommends Dataman, Zebra and Motorola 2D readers
 - Curved or reflective surfaces
 - Easy software

TAGGING OPERATION MANUAL MACHINES

MobileTag™ 600

Manual Tag Embossing Machine

The Hayata MobileTag™ 600 metal embosser is ideal for low-to-medium volume tagging. Lightweight (33 lbs.) and compact for easy transport, this simple-to-use embossing unit offers three different font sizes.

What Makes MobileTag 600 the BEST?

When you pull the trigger to advance to the next character, MobileTag 600 keeps that character in a straight line and an equal distance between previous characters. Even though you manually pull the lever, it automatically advances the tag to the next character.

No more uneven, up-and-down tag characters!

Which Tags? Hayata offers 27 stainless steel tag styles for the MobileTag 600. If you see this icon (●), that tag can be used on the MobileTag 600.



Ask About Our 24 Hour Embossing Service

Send Us Your Spreadsheet. We'll have your embossed tags produced and on the way within 24 hours.

See page 41 for details.



Which Tags? If you see this icon (●), that tag can be used on the HAY-40B.

HAY-40B

Debossing Numbering & Lettering Machine

Designed for stamping stainless steel identification tags and plates.

The HAY-40B comes with your choice of character dial size and matching space rack(s).

Character Dial Sizes: 1/16", 3/32", 1/8", 5/32" and 3/16".

Debosses tag sizes from 5.75" wide x 4.25" high. Also works with round tags.

See page 49 for stainless steel cable markers

To Order: US Toll-Free: 833-862-1668 • www.Hayata.com • sales@Hayata.com

TAGGING OPERATION AUTOMATED MACHINES

SmartTag™ 4500 FOR MEDIUM- TO HIGH-VOLUME OPERATIONS



**Output
450+ Tags
Per Hour!**

The **Hayata SmartTag™ 4500** is the KING of metal tag embossers. Designed to output a variety of Hayata tag sizes and materials, this rugged unit can emboss alphanumeric characters and 2D data barcode tags. Now 10% faster than previous models, the SmartTag 4500 features a touchscreen interface and new management features. It's ideal for medium- to high-volume tagging operations.

MULTIPLE CONNECTION OPTIONS

The Hayata SmartTag 4500 can be connected to a computer via Wi-Fi or USB/Ethernet cable to load tag data and manage production. The new Hayata touchscreen also allows direct manual entry.

REMOTE ACCESS & MANAGEMENT

Web services: Using a network-connected computer or tablet, remote set-up and operation can be managed via the web or through a VNC (Virtual Networking Computing) client.

Data transfer: Data import / export and software updates can be handled through any device connected to the SmartTag 4500 by using FTP (File Transfer Protocol).

- Wi-Fi-enabled
- Two model options to match your operation's outputting requirements (see back page for options)
- Can output standard alphanumeric characters and 2D data barcodes
- Password-protected for higher data security
- Remote access & management
- USB & Ethernet ports
- 250-tag capacity auto-load and unload – optional FIFO technology or side eject
- Large selection of fonts
- Built-in touch-screen for easy user interface
- Easy-to-use software

WORKS WITH
• **30 TAG STYLES**
See Pages 42-51



SmartTag™ 4500 FOR MEDIUM- TO HIGH-VOLUME OPERATIONS

Select the SmartTag™ 4500 Model That Best Fits Your Tagging Operation's Requirements

SmartTag 4500

Outputs alphanumeric characters on a variety of tag sizes, thicknesses and materials.

SmartTag 4500D

Outputs alphanumeric characters and **2D data barcodes** on a variety of tag sizes, thicknesses and materials.

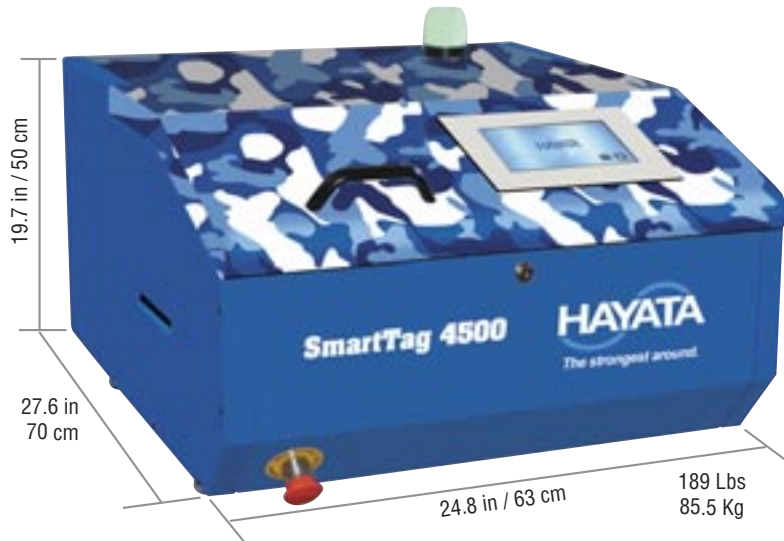


PLATE & FEEDER / MARKING

Tag Output Per Hour:*	Up to 450 – Based on single-line 8-character tag.
Tag Materials:	Stainless steel, carbon steel, aluminum, copper and brass.
Tag Size Range:	Rectangular: Width: 1.18 - 4.53 in / 30 - 115 mm / Height: 0.83 - 3.54 in / 21 - 90 mm Round Tag Size Diameter Range: 0.5 in / 38.1 mm.
Thickness:	0.015 ÷ 0.0354 in / 0.4 ÷ 0.9 mm.
Input Hopper:	Up to 250 plates capacity (0.015 in. / 4 mm). Automatic feed only
Output Hopper:	Up to 250 plates capacity. Options - FIFO or side eject.
Wheel Capacity:	Standard 60 slot or optional high-capacity 90 slot.
Type Set:	Multiple character configurations available.
Embossing Area:	From top edge – 2.56 in / 65 mm. Bottom edge no-print zone – .157 in / 4 mm.

No one matches Hayata's Stainless Steel Tag Inventory & Service!

COMMUNICATIONS & SOFTWARE

Interface:	USB 2.0 port (device and host), Ethernet, Wi-Fi.
Software:	Linux-based self-enclosed software. PC application software Windows 7/8/10.

HARDWARE

System Hardware:	CPU Arm Cortex-A8 / RAM 256 MB, with flash-disk and file system Linux O.S.-based.
Power Supply:	100 - 117 - 220 - 230 or 240 Volts - 50 or 60 Hz.
Operating Environment:	Temperature: 5 - 40 °C / 41 - 104 °F, relative humidity: 30% - 90% non-condensing.
Certifications:	UL, FCC, CE, RoHS.

*Output speed varies based on number of characters, lines and if producing 2D barcode tags

TAGGING OPERATION AUTOMATED MACHINES

SmartTag™ 1100

FOR LOW- TO MEDIUM-VOLUME OPERATIONS



- Wi-Fi-enabled
- Four model options to match your operation's outputting requirements (see back page for options)
- Can output standard alphanumeric characters and 2D data barcodes
- Password-protected for higher data security
- Remote access & management
- USB & Ethernet ports
- Built in touch-screen provides easy user interface
- Easy-to-use software
- Weighs 54 Lbs and comes with a built-in carrying handle

The **Hayata SmartTag™ 1100** is a portable, self-contained metal tag embosser designed to output a variety of Hayata tag sizes. This unit embosses alphanumeric characters on stainless steel tags and can also output 2D data barcodes. With its new interface and management features, the SmartTag 1100 is ideal for low- to medium-volume tag output operations.

MULTIPLE CONNECTION OPTIONS

The Hayata SmartTag 1100 can be connected to a computer via Wi-Fi or USB/Ethernet cable to load tag data and manage production. The new Hayata touchscreen also allows direct manual entry.

REMOTE ACCESS & MANAGEMENT

Web services: Using a network-connected computer or tablet, remote set-up and operation can be managed via the web or through a VNC (Virtual Networking Computing) client.

Data transfer: Data import / export and software updates can be handled through any device connected to the SmartTag 1100 by using FTP (File Transfer Protocol).

No one matches
Hayata's
Stainless Steel
Tag Inventory
& Service!

SmartTag™ 1100 FOR LOW- TO MEDIUM-VOLUME OPERATIONS

Select the SmartTag™ 1100 Model That Best Fits Your Tagging Operation's Requirements



SmartTag 1100

Outputs alphanumeric characters on one tag size.

SmartTag 1100D

Outputs alphanumeric characters and **2D data barcodes** on one tag size.

SmartTag 1100VT

Outputs alphanumeric characters on one size of stainless steel tag. Hayata TAG10

SmartTag 1100VTD

Outputs alphanumeric characters and **2D data barcodes** on same tag range as the 1100VT

Use these Hayata Tags for SmartTag 1100/D



Tag Size:
3.37" x 2.13" (85.6mm x 54mm)
Outputs 360 Tags Per Hour*



Minimum Tag Size: 2.05" x 1.14" (52mm x 29mm)
Maximum Tag Size: 2.56" x 2.36" (65mm x 60mm)

Outputs 360 Tags Per Hour*



Outputting Dog Tags or Medical Alert Tags? Use the Hayata SmartTag 1100DT



TAG 10 1.25" x 2.25"
(28.5mm x 50.8mm)

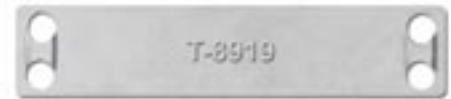


TAG 19 1.12" x 2.00"
(28.5mm x 50.8mm)
Rolled Edge

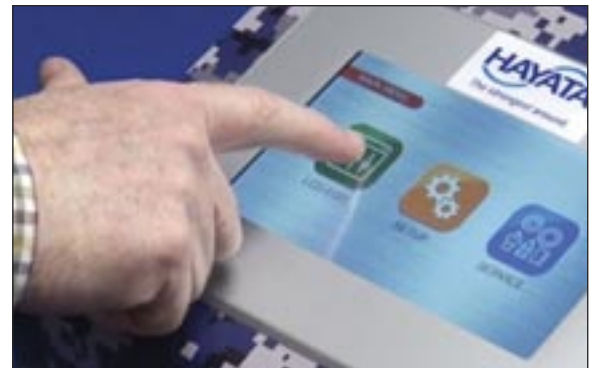


SmartTag 1100EZ

Outputs alphanumeric characters on the T-8919 stainless steel EZ Entry Tag.

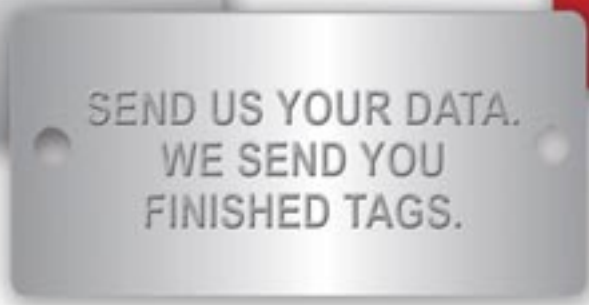


Tag Materials:	Stainless Steel or Aluminum
Thickness:	0.3556 ÷ 0.70 mm - 0.014 ÷ 0.0275 in
Input hopper:	Up to 250 plates capacity (.4 mm / 0.0157 in) Automatic feed only
Output hopper:	External collection tray
Wheel capacity:	60 slots
Type set:	Multiple Character Configurations
Embossing area:	From top edge up to 2.56" / 65 mm leaving free 4 mm / .157 in. at the bottom edge
Certifications:	UL, FCC, CE, RoHS
Performance:	Varies based on number of characters, lines and if producing 2D barcode tags



The Hayata SmartTag™ 1100 feature a built in touch-screen for easy user interface.

No one matches Hayata's Stainless Steel Tag Inventory & Service!



No more tedious manual outputting of tags and no money tied up in tag inventory.

Email us your tag data.

We'll emboss and ship your tags within **24 hours***

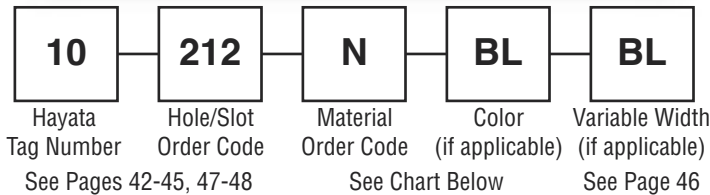
If your tagging operation requires customized tags, we have a simple solution for you.

1. Email us your data
2. Select tag number
3. We output your embossed tags
4. We ship you your tags

Get your tag order shipped complete with hanging accessories!

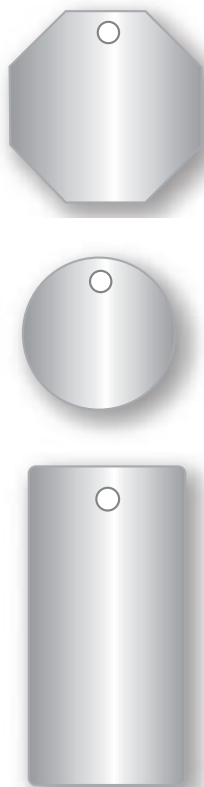
* 24 hour shipping means next business day (standard tags). Hole placement, hole size, and number of holes might increase turnaround time.

How to Order Your Hayata Blank Tags



Which Tags for your embossing unit?

- - SmartTag™ 4500 & 2500 compatible
- - SmartTag™ 1100 compatible
- - HAY-40B compatible
- - MobileTag™ 600 compatible



Tag Material Metal Options	Thickness (in)	Order Code	Anodized Colors	
Mill Finished Aluminum (3003)	.010	A		
Mill Finished Aluminum (3003)	.016	B		
Mill Finished Aluminum (3003)	.025	C	Red = RD	Green = GR
Tin Plate Steel #25 Matte	.015	D		
Galvanized Steel Soft Temper	.015	E		
Brass (260 Cartridge Brass)	.016	F	Blue = BL	Light Blue = LB
Stainless Steel (304 Dull)	.012	G		
Stainless Steel (304 Dull)	.014	H	Violet = VT	Yellow = YL
Stainless Steel (304 Dull)	.015	I		
Stainless Steel (304 Dull)	.020	R	Orange = OR	Brown = BR
Stainless Steel (304 Bright)	.015	J		
Stainless Steel (316 Dull)	.015	K		
Stainless Steel (316 Dull)	.030	S	Clear = CL	Black = BK
Stainless Steel (430 Bright)	.015	L		
Stainless Steel (Painted Black 1-side)	.015	M		
Anodized Aluminum (5005)	.016	N	RD, GR, BL, LB, YL, OR, BR, BK, CL	
Anodized Aluminum (5005)	.032	O	RD, GR, BL, VT, YL, OR, BK	
Anodized Aluminum (5205)	.016	P	BK Only	
Anodized Aluminum (5005)	.025	Q	Call for Color Options	

T-Series Easy Entry™ 316 Stainless Steel Tags

Hayata Easy Entry™ tags are made with a raised area on both sides to allow for easy insertion of stainless steel cable ties, thus allowing the tag to sit flush against a cable or pipe.

Workers appreciate how much faster the tags can be installed with the Easy Entry feature.

The T8919 and T5119 are designed to work with the SmartTag™ 4500 which can produce 450+ embossed one-line tags per hour or more than 180 three-line tags per hour.

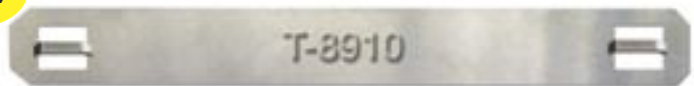


Raised area allows tie to sit flush against the tag.



Max. No. of Lines: 3 Max No. of Characters Per Line: 11
●●● Material: 316 Stainless Steel

NEW



Max. No. of Lines: 1 Max No. of Characters Per Line: 23
●● Material: 316 Stainless Steel



Max. No. of Lines: 3 Max No. of Characters Per Line: 23
●●● Works with SmartTag™ 4500 & 1100

Hayata Part No.	Length		Width		Thickness	
	In	mm	In	mm	In	mm
T-5119	2.00	51	0.75	19	0.015	0.26
T-8910	3.50	89	0.39	10	0.015	0.26
T-8919	3.50	89	0.75	19	0.015	0.26
Material: 316 Stainless Steel						

NOTE: Characters Per Line are based on a 4mm Font Size.

What Other Tags Work With Hayata's SmartTag Machines?

Look for these tag page icons:

- - SmartTag™ 4500 & 2500 compatible
- - SmartTag™ 1100 compatible
- - HAY-40B compatible
- - MobileTag™ 600 compatible

Information for maximum number of lines and characters is identified with each eligible tag.

NOTE: Characters Per Line are based on a 4mm Font Size.

Rectangular Single Tags

TAG 11



● Max. No. of Lines: 2 Max No. of Characters Per Line: 19

Order Code	# of Holes/Slots	Hole Size	Slot Size
000	0	-	-
112	1	.125"	-
212	2	.125"	-
4RL	4	-	.062" x .400"

●● Material Options: B, C, D, E, F, I, J, K, L, M, N, O, Q

TAG 12



● Max. No. of Lines: 3 Max No. of Characters Per Line: 22

Order Code	# of Holes	Hole Size	Slot Size
000	0	-	-
112	1	.125"	-
212	2	.125"	-

●● Material Options: B, C, D, E, F, I, J, K, L, M, N, O

TAG 13



Order Code	# of Holes	Hole Size	Slot Size
000	0	-	-
112	1	.125"	-
128	1	.281"	-

●● Material Options: B, C, F, H, I, J, K, L, N, O, Q

TAG 14



● Max. No. of Lines: 4 Max No. of Characters Per Line: 27

Order Code	# of Holes	Hole Size	Slot Size
125	1	.250"	-

●●● Material Options: I, J, K, L

TAG 15

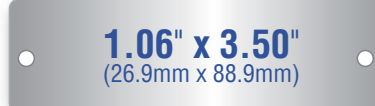


● Max. No. of Lines: 4 Max No. of Characters Per Line: 14

Order Code	# of Holes	Hole Size	Slot Size
000	0	-	-
121	1	.218"	-
115	1	.156"	-
215	2	.156"	-

●●● Material Options: B, C, F, H, I, J, K, L, N, O, Q

TAG 16

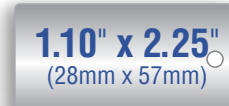


● Max. No. of Lines: 4 Max No. of Characters Per Line: 27

Order Code	# of Holes/Slots	Hole Size	Slot Size
000	0	-	-
115	1	.156"	-
125	1	.250"	-
137	1	.375"	-
215	2	.156"	-
225	2	.250"	-
420	4	.200"	-
4RL	4	-	.062" x .400"

●●● Material Options: B, C, D, E, F, I, J, K, L, M, N, O, Q

TAG 17



● Max. No. of Lines: 4 Max No. of Characters Per Line: 15

Order Code	# of Holes	Hole Size	Slot Size
000	0	-	-
112	1	.125"	-
125	1	.250"	-
212	2	.125"	-
425	4	.250"	-

●●● Material Options: B, C, F, H, I, J, N, O, Q

TAG 18



● Max. No. of Lines: 4 Max No. of Characters Per Line: 14

Order Code	# of Holes	Hole Size	Slot Size
000	0	-	-
112	1	.125"	-
125	1	.250"	-
212	2	.125"	-

●●● Material Options: B, C, F, H, I, J, K, L, N, O, Q

NOTE: Characters Per Line are based on a 4mm Font Size.

- - SmartTag™ 4500 & 2500 compatible
- - SmartTag™ 1100 compatible
- - HAY-40B compatible
- - MobileTag™ 600 compatible

See page 42 for Material Options description

Rectangular Single Tags

(Continued)

Military Dog Tag

(Rolled Edge)

1.12" x 2.00"
(28.5mm x 50.8mm)
- Rolled Edge -



TAG 19

● Max. No. of Lines: 4 Max No. of Characters Per Line: 14

Order Code	# of Holes/Slots	Hole Size	Slot Size
000	0	-	-
114	1	.140"	-
214	2	.140"	-
2RL	2	-	.062" x .400"

●●● Material Options: F,H,K,L

1.53" x 2.69"
(38.9mm x 68.3mm)

TAG 22

● Max. No. of Lines: 7 Max No. of Characters Per Line: 21

Order Code	# of Holes	Hole Size	Slot Size
000	0	-	-
112	1	.125"	-
156	1	.156"	-
212	2	.125"	-
215	2	.156"	-

●●● Material Options: B,C,D,E,F,I,J,K,L,M,N,O,Q

Medical Alert Tag

1.25" x 2.25"
(31.7mm x 57mm)



TAG 10

Max. No. of Lines: 5 Max No. of Characters Per Line: 15

Order Code	# of Holes	Hole Size	Slot Size
000	0	-	-
114	1	.140"	-
215	2	.156"	-
425	4	.250"	-

●●● Material Options: B, C, F, H, I, J, N, O, Q

1.56" x 3.50"
(39.6mm x 88.9mm)

TAG 23

● Max. No. of Lines: 7 Max No. of Characters Per Line: 26

Order Code	# of Holes/Slots	Hole Size	Slot Size
000	0	-	-
112	1	.125"	-
115	1	.156"	-
125	1	.250"	-
137	1	.375"	-
212	2	.125"	-
215	2	.156"	-
225	2	.250"	-
1LG	1	-	.125" x .500"
4RL	4	-	.062" x .400"

●●● Material Options: B,C,D,E,H,I,J,K,L,M,N,O,Q

1.37" x 3.75"
(34.8mm x 95.3mm)

TAG 20

● Max. No. of Lines: 6 Max No. of Characters Per Line: 29

Order Code	# of Holes	Hole Size	Slot Size
000	0	-	-
121	1	.218"	-
221	2	.218"	-

●●● Material Options: 0

1.45" x 1.29"
(36.8mm x 32.8mm)

TAG 21

Order Code	# of Holes	Hole Size	Slot Size
000	0	-	-
122	1	.220"	-

●●● Material Options: B,C,F,H,I,J,K,L,N,O,Q

1.57" x 3.15"
(39.9mm x 80mm)

TAG 24

● Max. No. of Lines: 7 Max No. of Characters Per Line: 24

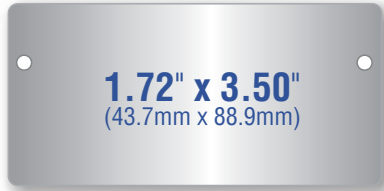
Order Code	# of Holes	Hole Size	Slot Size
000	0	-	-
115	1	.156"	-
215	2	.156"	-

●●● Material Options: B,C,D,E,F,I,J,K,L,M,N,O,Q

NOTE:

Characters Per Line are based on a 4mm Font Size.

- - SmartTag™ 4500 & 2500 compatible
 - - SmartTag™ 1100 compatible
 - - HAY-40B compatible
 - - MobileTag™ 600 compatible
- See page 42 for Material Options description



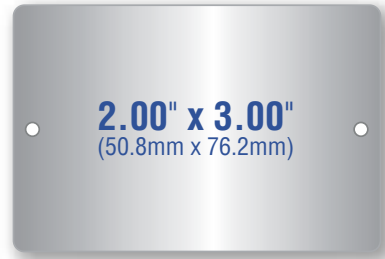
TAG

25

● Max. No. of Lines: 8 Max No. of Characters Per Line: 25

Order Code	# of Holes	Hole Size	Slot Size
000	0	-	-
115	1	.156"	-
118	1	.188"	-
215	2	.156"	-
218	2	.188"	-

●●● Material Options: B, C, D, E, F, I, J, K, L, M, N, O, Q



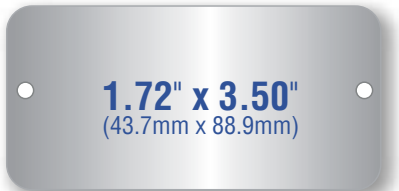
TAG

28

● Max. No. of Lines: 9 Max No. of Characters Per Line: 22

Order Code	# of Holes/Slots	Hole Size	Slot Size
000	0	-	-
112	1	.125"	-
212	2	.125"	-
HLG	1	-	.125" x .500"

●●● Material Options: B, C, D, E, F, I, J, K, L, M, N, O, Q Luggage Slot



TAG

26

● Max. No. of Lines: 8 Max No. of Characters Per Line: 25

Order Code	# of Holes/Slots	Hole Size	Slot Size
000	0	-	-
109	1	.093"	-
115	1	.156"	-
118	1	.188"	-
125	1	.250"	-
128	1	.281"	-
150	1	.500"	-
209	2	.093"	-
215	2	.156"	-
221	2	.216"	-
225	2	.250"	-
420	4	.200"	-
425	4	.250"	-
2TN	2	-	.188" x .063"

●●● Material Options: B, C, D, E, F, I, J, K, L, M, N, O



TAG

50

● Max. No. of Lines: 1 Max No. of Characters Per Line: 15

Order Code	# of Slots	Hole Size	Slot Size
000	0	-	-
1SL	1	-	.039" x .33"

●●● Material Options: B, I, J, K



TAG

51

● Max. No. of Lines: 2 Max No. of Characters Per Line: 15

Order Code	# of Slots	Hole Size	Slot Size
000	0	-	-
2SL	2	-	.059" x .334"

●●● Material Options: B, I, J, K



TAG

52

● Max. No. of Lines: 3 Max No. of Characters Per Line: 20

Order Code	# of Holes	Hole Size	Slot Size
000	0	-	-
123	1	.236"	-

●●● Material Options: B, I, J, K



TAG

27

● Max. No. of Lines: 9 Max No. of Characters Per Line: 15

Order Code	# of Holes	Hole Size	Slot Size
000	0	-	-
115	1	.156"	-

●●● Material Options: B, C, F, H, I, J, K, L, N, O, Q



TAG

53

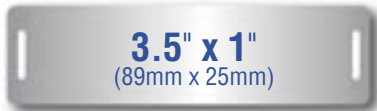
● Max. No. of Lines: 2 Max No. of Characters Per Line: 18

Order Code	# of Slots	Hole Size	Slot Size
000	0	-	-
4RL	4	-	.078" x .354"

●●● Material Options: B, I, J, K

Rectangular Single Tags

(Continued)



3.5" x 1"
(89mm x 25mm)

TAG

54

● Max. No. of Lines: 2 Max No. of Characters Per Line: 15

Order Code	# of Slots	Hole Size	Slot Size
000	0	-	-
2VSL	2	.078"	.118" x .470"
2VSL2-R	2		.56" x .099"

●●● Material Options: I, R



1.89" x 1.89"
(48mm x 48mm)

TAG

55

● Max. No. of Lines: 2 Max No. of Characters Per Line: 15

Order Code	# of Holes	Hole Size	Slot Size
000	0	-	-
120-R	4	.130"	-

●●● Material Options: B, I, J, K



2.12" x 3.37"
(53.8mm x 85.6mm)

TAG

29

● Max. No. of Lines: 10 Max No. of Characters Per Line: 24

Order Code	# of Holes/Slots	Hole Size	Slot Size
000	0	-	-
115	1	.156"	-
118	1	.188" (corner)	-
120	1	.203" (corner)	-
125	1	.250" (centered)	-
137	1	.375" (centered)	-
150	1	.500"	-
215	2	.156"	-
225	2	.250"	-
415	4	.156"	-
1LG	1	-	.125" x .500"
2TN	2	-	.188" x .063"

●●● Material Options: B, C, D, E, F, I, J, K, L, M, N, O, Q



2.82" x 3.75"
(25.4mm x 50.8mm)

TAG

30

● Max. No. of Lines: 12 Max No. of Characters Per Line: 26

Order Code	# of Holes	Hole Size	Slot Size
000	0	-	-
115	1	.156"	-
125	1	.250"	-
215	2	.156"	-
225	2	.250"	-
415	4	.156"	-

●● Material Options: B, C, D, E, F, K, L, M, N, O, Q



2.87" x 4.00"
(72.9mm x 101.6mm)

TAG

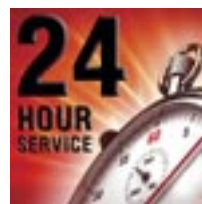
31

● Max. No. of Lines: 13 Max No. of Characters Per Line: 33

Order Code	# of Holes	Hole Size	Slot Size
000	0	-	-
115	1	.156"	-
118	1	.188" *	-
215	2	.156"	-
415	4	.156"	-

●● Material Options: B, C, D, E, F, I, J, K, L, M, N, O, Q

* Centered on 4" Sides

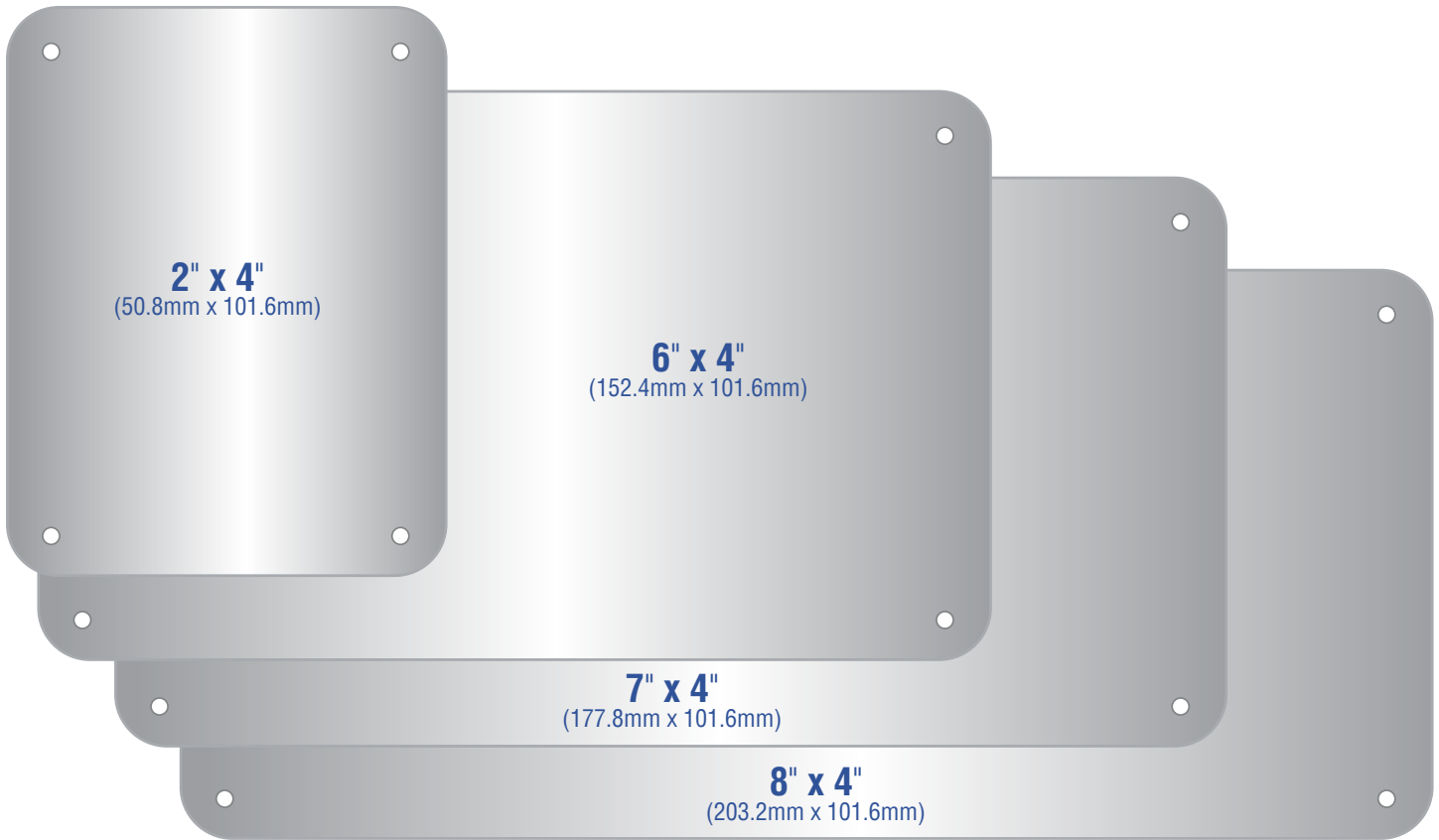


- - SmartTag™ 4500 & 2500 compatible
 - - SmartTag™ 1100 compatible
 - - HAY-40B compatible
 - - MobileTag™ 600 compatible
- See page 42 for Material Options description

NOTE: Characters Per Line are based on a 4mm Font Size.

Rectangular Single Tags

(Continued)



TAG 60 **2" x 4"**
(50.8mm x 101.6mm)
● Max. No. of Lines: 2 Max No. of Characters Per Line: 15

Order Code	# of Holes	Hole Size	Slot Size
000	0	-	-
415	4	.156"	-

●●● Material Options: B, I, J, K

TAG 61 **6" x 4"**
(152.4mm x 101.6mm)
● Max. No. of Lines: 2 Max No. of Characters Per Line: 15

Order Code	# of Holes	Hole Size	Slot Size
000	0	-	-
415	4	.156"	-

● Material Options: B, I, J, K

TAG 62 **7" x 4"**
(177.8mm x 101.6mm)
● Max. No. of Lines: 2 Max No. of Characters Per Line: 15

Order Code	# of Holes	Hole Size	Slot Size
000	0	-	-
415	4	.156"	-

● Material Options: B, I, J, K

TAG 63 **8" x 4"**
(203.2mm x 101.6mm)
● Max. No. of Lines: 2 Max No. of Characters Per Line: 15

Order Code	# of Holes	Hole Size	Slot Size
000	0	-	-
415	4	.156"	-

● Material Options: B, I, J, K

Variable-Width Combo Tags

NOTE: Tags 32, 33 and 34 are NOT available for 24 Hour Embossing Service

**TAG
32**



Order Code	# of Slots	Hole Size	Slot Size
000	0	-	-
IRL	1	-	.062" x .400"

● Material Options: A,G,I

**TAG
33**



Order Code	# of Holes	Hole Size	Slot Size
000	0	-	-
114	1	.140"	-
215	2	.156"	-
425	4	.250"	-

● Material Options: P

**TAG
34**



Order Code	# of Holes/Slots	Hole Size	Slot Size
000	0	-	-
115	1	.156"	-
215	2	.156"	-
4RL	4	-	.062" x .400"
119	1	.198"	-
219	2	.198"	-

● Material Options: B,C,F,N



Aluminum Strapping Roll

Milled-finish aluminum for use in slotted tag installation.

Hayata Part # ALBAND-B-85
.016" x .3125" x 85'

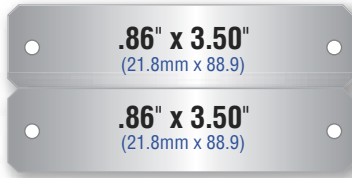
20 Rolls per Case

Rectangular Combo Tags

1.72" x 3.50"
(43.7mm x 88.9mm)

Overall Tag Size

Two (2) Finished Tags



TAG

35

● Max. No. of Lines/Tag: 3 Max No. of Characters Per Line: 19

Order Code	# of Holes/Slots	Hole Size	Slot Size
000	0	-	-
115	1	.156"	-
215	2	.156"	-
4RL	4	-	.062" x .400"

●●● Material Options: B, C, F, N, O

2.12" x 3.37"
(53.8mm x 85.6mm)

Overall Tag Size

Two (2) Finished Tags



TAG

36

● Max. No. of Lines/Tag: 4 Max No. of Characters Per Line: 19

Order Code	# of Holes/Slots	Hole Size	Slot Size
000	0	-	-
115	1	.156"	-
125	1	.250"	-
215	2	.156"	-
225	2	.250"	-
4RL	4	-	.062" x .400"

●●●● Material Options: B, C, F, N, O

2.12" x 3.37"
(53.8mm x 85.6mm)

Overall Tag Size

Three (3) Finished Tags



TAG

37

● Max. No. of Lines/Tag: 2 Max No. of Characters Per Line: 18

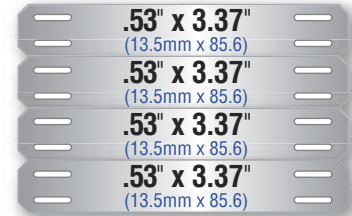
Order Code	# of Holes/Slots	Hole Size	Slot Size
000	0	-	-
115	1	.156"	-
215	2	.156"	-
4RL	4	-	.078" x .354"

●●●● Material Options: B, C, F, N, O

2.12" x 3.37"
(53.8mm x 85.6mm)

Overall Tag Size

Four (4) Finished Tags



TAG

38

● Max. No. of Lines/Tag: 1 Max No. of Characters Per Line: 18

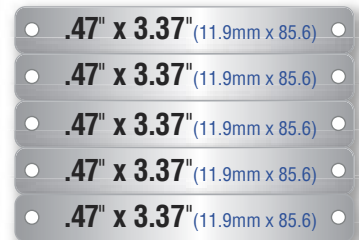
Order Code	# of Holes/Slots	Hole Size	Slot Size
000	0	-	-
115	1	.156"	-
119	1	.198"	-
215	2	.156"	-
219	2	.198"	-
4RL	4	-	.062" x .400"

●●●● Material Options: B, C, F, N, O

2.36" x 3.37"
(59.9mm x 85.6mm)

Overall Tag Size

Five (5) Finished Tags



TAG

39

● Max. No. of Lines/Tag: 1 Max No. of Characters Per Line: 24

Order Code	# of Holes	Hole Size	Slot Size
000	0	-	-
115	1	.156"	-
215	2	.156"	-

●●● Material Options: O

NOTE: Characters Per Line are based on a 4mm Font Size.



- - SmartTag™ 4500 & 2500 compatible
- - SmartTag™ 1100 compatible
- - HAY-40B compatible
- - MobileTag™ 600 compatible

See page 40 for Material Options description

Octagonal Tags

NOTE: Tags on this page are
NOT available for 24 Hour Embossing Service

For automatic round tag
embossing capability,
please call us.

TAG
43



Order Code	# of Holes	Hole Size	Slot Size
000	0	-	-
118	1	.188"	-

● Material Options: B,C,F,H,I,J,K,L,N,O,Q

TAG
44



Order Code	# of Holes	Hole Size	Slot Size
000	0	-	-
118	1	.188"	-

● Material Options: B,C,F,H,I,J,K,L,N,O,Q

ID Plates



Hayata Part No.	Length		Width		Thickness	
	In	mm	In	mm	In	mm
T-6334	2.48	63	1.33	34	0.010	0.26
T-8996	3.50	89	3.77	96	0.010	0.26
T-6008	2.36	60	0.31	8	0.010	0.26

● Material: Stainless Steel - uncoated



Hayata Part No.	Length		Width		Thickness	
	In	mm	In	mm	In	mm
T-8919B	3.50	89	0.75	19	0.15	0.38

● Material: Stainless Steel - uncoated

Round Tags

TAG
40



Order Code	# of Holes	Hole Size	Slot Size
000	0	-	-
112	1	.125"	-
125	1	.250"	-

●● Material Options: B,C,F,H,I,J,K,L,N,O,Q

TAG
41



Order Code	# of Holes/Slots	Hole Size	Slot Size
000	0	-	-
112	1	.125"	-
125	1	.250"	-

●● Material Options: B,C,F, H,I,J,K,L,N,O,Q

TAG
42



Order Code	# of Holes	Hole Size	Slot Size
000	0	-	-
112	1	.125"	-
125	1	.250"	-

●● Material Options: B,C,D,E,F,I,J,K,L,M,N,O,Q

For automatic round tag
embossing capability,
please call us.

STAINLESS STEEL CABLE MARKERS



Stainless Steel Carrier for ID (C Series)

Hayata Part No.	Length		Width		Thickness	
	In	mm	In	mm	In	mm
C-1	3.64	92.5	0.31	8	0.01	0.26
C-2	5.14	130.6	0.31	8	0.01	0.26
C-3	7.39	187.7	0.31	8	0.01	0.26

● Material: Stainless Steel - uncoated



MB-1 Marker Box

The Hayata cable marker box comes with **100 pieces** of each ID marker type

● - HAY-40B compatible

See page 42 for Material Options description

Hayata Part No.	Length		Width		Thickness	
	In	mm	In	mm	In	mm
ID-A	0.35	9	0.1	2.5	0.01	0.26
ID-B	0.35	9	0.1	2.5	0.01	0.26
ID-C	0.35	9	0.1	2.5	0.01	0.26
ID-D	0.35	9	0.1	2.5	0.01	0.26
ID-E	0.35	9	0.1	2.5	0.01	0.26
ID-F	0.35	9	0.1	2.5	0.01	0.26
ID-G	0.35	9	0.1	2.5	0.01	0.26
ID-H	0.35	9	0.1	2.5	0.01	0.26
ID-I	0.35	9	0.1	2.5	0.01	0.26
ID-J	0.35	9	0.1	2.5	0.01	0.26
ID-K	0.35	9	0.1	2.5	0.01	0.26
ID-L	0.35	9	0.1	2.5	0.01	0.26
ID-M	0.35	9	0.1	2.5	0.01	0.26
ID-N	0.35	9	0.1	2.5	0.01	0.26
ID-O	0.35	9	0.1	2.5	0.01	0.26
ID-P	0.35	9	0.1	2.5	0.01	0.26
ID-Q	0.35	9	0.1	2.5	0.01	0.26
ID-R	0.35	9	0.1	2.5	0.01	0.26
ID-S	0.35	9	0.1	2.5	0.01	0.26
ID-T	0.35	9	0.1	2.5	0.01	0.26
ID-U	0.35	9	0.1	2.5	0.01	0.26
ID-V	0.35	9	0.1	2.5	0.01	0.26
ID-W	0.35	9	0.1	2.5	0.01	0.26
ID-X	0.35	9	0.1	2.5	0.01	0.26
ID-Y	0.35	9	0.1	2.5	0.01	0.26
ID-Z	0.35	9	0.1	2.5	0.01	0.26
ID-1	0.35	9	0.1	2.5	0.01	0.26
ID-2	0.35	9	0.1	2.5	0.01	0.26
ID-3	0.35	9	0.1	2.5	0.01	0.26
ID-4	0.35	9	0.1	2.5	0.01	0.26
ID-5	0.35	9	0.1	2.5	0.01	0.26
ID-6	0.35	9	0.1	2.5	0.01	0.26
ID-7	0.35	9	0.1	2.5	0.01	0.26
ID-8	0.35	9	0.1	2.5	0.01	0.26
ID-9	0.35	9	0.1	2.5	0.01	0.26
ID-0	0.35	9	0.1	2.5	0.01	0.26
ID--	0.35	9	0.1	2.5	0.01	0.26
ID-BLANK	0.35	9	0.1	2.5	0.01	0.26
ID-+	0.35	9	0.1	2.5	0.01	0.26
ID-~	0.35	9	0.1	2.5	0.01	0.26
ID-EARTH	0.35	9	0.1	2.5	0.01	0.26
ID-/	0.35	9	0.1	2.5	0.01	0.26

Stainless Steel Chemical Resistance Charts

CHEMICAL / SUBSTANCE	304 Stainless Steel Compatibility	316 Stainless Steel Compatibility
Acetaldehyde	A-Excellent	A-Excellent
Acetamide	B-Good	A-Excellent
Acetate Solvent	A-Excellent	A-Excellent
Acetic Acid	D-Severe Effect	B-Good
Acetic Acid 20%	B-Good	A-Excellent
Acetic Acid 80%	D-Severe Effect	B-Good
Acetic Acid, Glacial	C-Fair	A-Excellent
Acetic Anhydride	B-Good	A-Excellent
Acetone	A-Excellent	A-Excellent
Acetyl Bromide	N/A	N/A
Acetyl Chloride (dry)	A-Excellent	A-Excellent
Acetylene	A-Excellent	A-Excellent
Acrylonitrile	A-Excellent	A-Excellent
Adipic Acid	A-Excellent	A-Excellent
Alcohols: Amyl	A-Excellent	A-Excellent
Alcohols: Benzyl	B-Good	B-Good
Alcohols: Butyl	A-Excellent	A-Excellent
Alcohols: Diacetone	A-Excellent	A-Excellent
Alcohols: Ethyl	A-Excellent	A-Excellent
Alcohols: Hexyl	A-Excellent	A-Excellent
Alcohols: Isobutyl	A-Excellent	A-Excellent
Alcohols: Isopropyl	B-Good	B-Good
Alcohols: Methyl	A-Excellent	A-Excellent
Alcohols: Octyl	A-Excellent	A-Excellent
Alcohols: Propyl	A-Excellent	A-Excellent
Aluminum Chloride	B-Good	B-Good
Aluminum Chloride 20%	D-Severe Effect	C-Fair
Aluminum Fluoride	D-Severe Effect	D-Severe Effect
Aluminum Hydroxide	A-Excellent	C-Fair
Aluminum Nitrate	A-Excellent	A-Excellent
Aluminum Potassium Sulfate 10%	A-Excellent	A-Excellent
Aluminum Potassium Sulfate 100%	D-Severe Effect	B-Good
Aluminum Sulfate	B-Good	B-Good
Alums	N/A	A-Excellent
Amines	A-Excellent	A-Excellent
Ammonia 10%	A-Excellent	A-Excellent
Ammonia Nitrate	A-Excellent	A-Excellent
Ammonia, anhydrous	A-Excellent	A-Excellent
Ammonia, liquid	B-Good	A-Excellent
Ammonium Acetate	B-Good	A-Excellent
Ammonium Bifluoride	D-Severe Effect	B-Good
Ammonium Carbonate	B-Good	B-Good
Ammonium Caseinate	N/A	A-Excellent
Ammonium Chloride	C-Fair	B-Good
Ammonium Hydroxide	A-Excellent	A-Excellent
Ammonium Nitrate	A-Excellent	A-Excellent
Ammonium Oxalate	A-Excellent	A-Excellent
Ammonium Persulfate	A-Excellent	B-Good
Ammonium Phosphate, Dibasic	B-Good	C-Fair
Ammonium Phosphate, Monobasic	B-Good	C-Fair
Ammonium Phosphate, Tribasic	B-Good	B-Good
Ammonium Sulfate	B-Good	B-Good
Ammonium Sulfite	B-Good	B-Good
Ammonium Thiosulfate	N/A	A-Excellent
Amyl Acetate	A-Excellent	A-Excellent
Amyl Alcohol	A-Excellent	A-Excellent
Amyl Chloride	A-Excellent	A-Excellent
Aniline	A-Excellent	B-Good
Aniline Hydrochloride	D-Severe Effect	D-Severe Effect
Antifreeze	N/A	A-Excellent
Antimony Trichloride	D-Severe Effect	D-Severe Effect
Aqua Regia (80% HCl, 20% HNO3)	D-Severe Effect	D-Severe Effect
Arochlor 1248	B-Good	B-Good
Aromatic Hydrocarbons	N/A	C-Fair
Arsenic Acid	A-Excellent	A-Excellent
Arsenic Salts	N/A	N/A
Asphalt	B-Good	A-Excellent
Barium Carbonate	B-Good	B-Good

CHEMICAL / SUBSTANCE	304 Stainless Steel Compatibility	316 Stainless Steel Compatibility
Barium Chloride	A-Excellent	A-Excellent
Barium Cyanide	A-Excellent	A-Excellent
Barium Hydroxide	B-Good	B-Good
Barium Nitrate	B-Good	B-Good
Barium Sulfate	B-Good	B-Good
Barium Sulfide	B-Good	B-Good
Beer	A-Excellent	A-Excellent
Beet Sugar Liquids	A-Excellent	A-Excellent
Benzaldehyde	B-Good	B-Good
Benzene	B-Good	B-Good
Benzene Sulfonic Acid	B-Good	B-Good
Benzoic Acid	B-Good	B-Good
Benzol	A-Excellent	A-Excellent
Benzonitrile	D-Severe Effect	D-Severe Effect
Benzyl Chloride	C-Fair	B-Good
Bleaching Liquors	N/A	N/A
Borax (Sodium Borate)	A-Excellent	A-Excellent
Boric Acid	B-Good	A-Excellent
Brewery Slop	N/A	A-Excellent
Bromine	D-Severe Effect	D-Severe Effect
Butadiene	A-Excellent	A-Excellent
Butane	A-Excellent	A-Excellent
Butanol (Butyl Alcohol)	A-Excellent	A-Excellent
Butter	C-Fair	A-Excellent
Buttermilk	A-Excellent	A-Excellent
Butyl Amine	N/A	A-Excellent
Butyl Ether	N/A	A-Excellent
Butyl Phthalate	B-Good	B-Good
Butylacetate	B-Good	A-Excellent
Butylene	A-Excellent	A-Excellent
Butyric Acid	B-Good	B-Good
Calcium Bisulfate	N/A	A-Excellent
Calcium Bisulfide	B-Good	B-Good
Calcium Bisulfite	B-Good	A-Excellent
Calcium Carbonate	A-Excellent	B-Good
Calcium Chlorate	N/A	N/A
Calcium Chloride	C-Fair	B-Good
Calcium Hydroxide	B-Good	B-Good
Calcium Hypochlorite	C-Fair	B-Good
Calcium Nitrate	C-Fair	B-Good
Calcium Oxide	A-Excellent	A-Excellent
Calcium Sulfate	B-Good	B-Good
Calgon	A-Excellent	A-Excellent
Cane Juice	A-Excellent	A-Excellent
Carbolic Acid (Phenol)	B-Good	B-Good
Carbon Bisulfide	A-Excellent	B-Good
Carbon Dioxide (dry)	A-Excellent	A-Excellent
Carbon Dioxide (wet)	A-Excellent	A-Excellent
Carbon Disulfide	A-Excellent	B-Good
Carbon Monoxide	A-Excellent	A-Excellent
Carbon Tetrachloride	B-Good	B-Good
Carbon Tetrachloride (dry)	B-Good	B-Good
Carbon Tetrachloride (wet)	A-Excellent	A-Excellent
Carbonated Water	A-Excellent	A-Excellent
Carbonic Acid	A-Excellent	A-Excellent
Catsup	A-Excellent	A-Excellent
Chloric Acid	D-Severe Effect	C-Fair
Chlorinated Glue	N/A	A-Excellent
Chlorine (dry)	A-Excellent	B-Good
Chlorine Water	C-Fair	C-Fair
Chlorine, Anhydrous Liquid	C-Fair	C-Fair
Chloroacetic Acid	B-Good	A-Excellent
Chlorobenzene (Mono)	A-Excellent	B-Good
Chlorobromomethane	N/A	N/A
Chloroform	A-Excellent	A-Excellent
Chlorosulfonic Acid	D-Severe Effect	B-Good
Chocolate Syrup	A-Excellent	A-Excellent

Stainless Steel Chemical Resistance Charts

CHEMICAL / SUBSTANCE	304 Stainless Steel Compatibility	316 Stainless Steel Compatibility
Chromic Acid 10%	B-Good	B-Good
Chromic Acid 30%	B-Good	B-Good
Chromic Acid 5%	B-Good	A-Excellent
Chromic Acid 50%	C-Fair	B-Good
Chromium Salts	N/A	N/A
Cider	A-Excellent	A-Excellent
Citric Acid	B-Good	A-Excellent
Citric Oils	A-Excellent	A-Excellent
Clorox® (Bleach)	A-Excellent	A-Excellent
Coffee	A-Excellent	A-Excellent
Copper Chloride	D-Severe Effect	D-Severe Effect
Copper Cyanide	B-Good	B-Good
Copper Fluoborate	D-Severe Effect	D-Severe Effect
Copper Nitrate	A-Excellent	A-Excellent
Copper Sulfate >5%	B-Good	B-Good
Copper Sulfate 5%	B-Good	B-Good
Cream	A-Excellent	A-Excellent
Cresols	A-Excellent	A-Excellent
Cresylic Acid	A-Excellent	A-Excellent
Cupric Acid	D-Severe Effect	B-Good
Cyanic Acid	A-Excellent	A-Excellent
Cyclohexane	A-Excellent	A-Excellent
Cyclohexanone	A-Excellent	A-Excellent
Detergents	A-Excellent	A-Excellent
Diacetone Alcohol	B-Good	B-Good
Dichlorobenzene	N/A	B-Good
Dichloroethane	B-Good	B-Good
Diesel Fuel	A-Excellent	A-Excellent
Diethyl Ether	B-Good	B-Good
Diethylamine	A-Excellent	A-Excellent
Diethylene Glycol	A-Excellent	A-Excellent
Dimethyl Aniline	B-Good	B-Good
Dimethyl Formamide	A-Excellent	B-Good
Diphenyl	B-Good	B-Good
Diphenyl Oxide	B-Good	A-Excellent
Dyes	A-Excellent	A-Excellent
Epsom Salts (Magnesium Sulfate)	A-Excellent	B-Good
Ethane	A-Excellent	A-Excellent
Ethanol	A-Excellent	A-Excellent
Ethanolamine	A-Excellent	A-Excellent
Ether	A-Excellent	A-Excellent
Ethyl Acetate	B-Good	B-Good
Ethyl Benzoate	N/A	N/A
Ethyl Chloride	A-Excellent	A-Excellent
Ethyl Ether	B-Good	B-Good
Ethyl Sulfate	D-Severe Effect	D-Severe Effect
Ethylene Bromide	A-Excellent	A-Excellent
Ethylene Chloride	B-Good	B-Good
Ethylene Chlorohydrin	B-Good	B-Good
Ethylene Diamine	B-Good	B-Good
Ethylene Dichloride	B-Good	B-Good
Ethylene Glycol	B-Good	B-Good
Ethylene Oxide	B-Good	B-Good
Fatty Acids	B-Good	A-Excellent
Ferric Chloride	D-Severe Effect	D-Severe Effect
Ferric Nitrate	B-Good	B-Good
Ferric Sulfate	B-Good	A-Excellent
Ferrous Chloride	D-Severe Effect	D-Severe Effect
Ferrous Sulfate	B-Good	B-Good
Fluoboric Acid	B-Good	B-Good
Fluorine	C-Fair	A-Excellent
Fluosilicic Acid	C-Fair	B-Good
Formaldehyde 100%	C-Fair	A-Excellent
Formaldehyde 40%	A-Excellent	A-Excellent
Formic Acid	B-Good	A-Excellent
Freon 113	N/A	N/A
Freon 12	B-Good	B-Good
Freon 22	A-Excellent	A-Excellent

CHEMICAL / SUBSTANCE	304 Stainless Steel Compatibility	316 Stainless Steel Compatibility
Freon TF	A-Excellent	A-Excellent
Freon® 11	A-Excellent	A-Excellent
Fruit Juice	A-Excellent	A-Excellent
Fuel Oils	A-Excellent	A-Excellent
Furan Resin	A-Excellent	A-Excellent
Furfural	A-Excellent	B-Good
Gallic Acid	A-Excellent	B-Good
Gasoline (high-aromatic)	A-Excellent	A-Excellent
Gasoline, leaded, ref.	A-Excellent	A-Excellent
Gasoline, unleaded	A-Excellent	A-Excellent
Gelatin	A-Excellent	A-Excellent
Glucose	A-Excellent	A-Excellent
Glue, P.V.A.	A-Excellent	A-Excellent
Glycerin	A-Excellent	A-Excellent
Glycolic Acid	A-Excellent	A-Excellent
Gold Monocyanide	A-Excellent	A-Excellent
Grape Juice	A-Excellent	A-Excellent
Grease	N/A	A-Excellent
Heptane	A-Excellent	A-Excellent
Hexane	A-Excellent	A-Excellent
Honey	A-Excellent	A-Excellent
Hydraulic Oil (Petro)	A-Excellent	A-Excellent
Hydraulic Oil (Synthetic)	A-Excellent	A-Excellent
Hydrazine	A-Excellent	A-Excellent
Hydrobromic Acid 100%	D-Severe Effect	D-Severe Effect
Hydrobromic Acid 20%	D-Severe Effect	D-Severe Effect
Hydrochloric Acid 100%	D-Severe Effect	D-Severe Effect
Hydrochloric Acid 20%	D-Severe Effect	D-Severe Effect
Hydrochloric Acid 37%	D-Severe Effect	D-Severe Effect
Hydrochloric Acid, Dry Gas	D-Severe Effect	D-Severe Effect
Hydrocyanic Acid	B-Good	A-Excellent
Hydrocyanic Acid (Gas 10%)	N/A	N/A
Hydrofluoric Acid 100%	B-Good	B-Good
Hydrofluoric Acid 20%	D-Severe Effect	D-Severe Effect
Hydrofluoric Acid 50%	D-Severe Effect	D-Severe Effect
Hydrofluoric Acid 75%	D-Severe Effect	D-Severe Effect
Hydrofluosilicic Acid 100%	D-Severe Effect	D-Severe Effect
Hydrofluosilicic Acid 20%	C-Fair	B-Good
Hydrogen Gas	A-Excellent	A-Excellent
Hydrogen Peroxide 10%	B-Good	B-Good
Hydrogen Peroxide 100%	B-Good	A-Excellent
Hydrogen Peroxide 30%	B-Good	B-Good
Hydrogen Peroxide 50%	B-Good	A-Excellent
Hydrogen Sulfide (aqua)	C-Fair	A-Excellent
Hydrogen Sulfide (dry)	C-Fair	A-Excellent
Hydroquinone	B-Good	B-Good
Hydroxyacetic Acid 70%	N/A	N/A
Ink	C-Fair	C-Fair
Iodine	D-Severe Effect	D-Severe Effect
Iodine (in alcohol)	N/A	N/A
Iodoform	A-Excellent	A-Excellent
Isooctane	A-Excellent	A-Excellent
Isopropyl Acetate	C-Fair	A-Excellent
Isopropyl Ether	A-Excellent	A-Excellent
Isotane	N/A	N/A
Jet Fuel (JP3, JP4, JP5)	A-Excellent	A-Excellent
Kerosene	A-Excellent	A-Excellent
Ketones	A-Excellent	A-Excellent
Lacquer Thinners	A-Excellent	A-Excellent
Lacquers	A-Excellent	A-Excellent
Lactic Acid	B-Good	B-Good
Lard	A-Excellent	A-Excellent
Latex	A-Excellent	A-Excellent
Lead Acetate	B-Good	B-Good
Lead Nitrate	B-Good	B-Good
Lead Sulfamate	C-Fair	C-Fair
Ligroin	N/A	A-Excellent
Lime	A-Excellent	A-Excellent

Stainless Steel Chemical Resistance Charts

CHEMICAL / SUBSTANCE	304 Stainless Steel Compatibility	316 Stainless Steel Compatibility
Linoleic Acid	B-Good	A-Excellent
Lithium Chloride	A-Excellent	A-Excellent
Lithium Hydroxide	B-Good	B-Good
Lubricants	A-Excellent	A-Excellent
Lye: Ca(OH) ₂ Calcium Hydroxide	B-Good	B-Good
Lye: KOH Potassium Hydroxide	B-Good	A-Excellent
Lye: NaOH Sodium Hydroxide	B-Good	B-Good
Magnesium Bisulfate	A-Excellent	A-Excellent
Magnesium Carbonate	B-Good	B-Good
Magnesium Chloride	D-Severe Effect	D-Severe Effect
Magnesium Hydroxide	B-Good	A-Excellent
Magnesium Nitrate	B-Good	B-Good
Magnesium Oxide	A-Excellent	A-Excellent
Magnesium Sulfate (Epsom Salts)	A-Excellent	B-Good
Maleic Acid	A-Excellent	B-Good
Maleic Anhydride	A-Excellent	A-Excellent
Malic Acid	A-Excellent	A-Excellent
Manganese Sulfate	B-Good	B-Good
Mash	A-Excellent	A-Excellent
Mayonnaise	C-Fair	A-Excellent
Melamine	N/A	D-Severe Effect
Mercuric Chloride (dilute)	D-Severe Effect	D-Severe Effect
Mercuric Cyanide	C-Fair	C-Fair
Mercurous Nitrate	A-Excellent	A-Excellent
Mercury	A-Excellent	A-Excellent
Methane	A-Excellent	A-Excellent
Methanol (Methyl Alcohol)	A-Excellent	A-Excellent
Methyl Acetate	A-Excellent	B-Good
Methyl Acetone	A-Excellent	A-Excellent
Methyl Acrylate	A-Excellent	N/A
Methyl Alcohol 10%	A-Excellent	A-Excellent
Methyl Bromide	A-Excellent	A-Excellent
Methyl Butyl Ketone	A-Excellent	A-Excellent
Methyl Cellosolve	B-Good	B-Good
Methyl Chloride	A-Excellent	A-Excellent
Methyl Dichloride	N/A	N/A
Methyl Ethyl Ketone	A-Excellent	A-Excellent
Methyl Ethyl Ketone Peroxide	N/A	N/A
Methyl Isobutyl Ketone	B-Good	B-Good
Methyl Isopropyl Ketone	A-Excellent	A-Excellent
Methyl Methacrylate	B-Good	B-Good
Methylamine	A-Excellent	A-Excellent
Methylene Chloride	B-Good	B-Good
Milk	A-Excellent	A-Excellent
Mineral Spirits	A-Excellent	A-Excellent
Molasses	A-Excellent	A-Excellent
Monochloroacetic acid	A-Excellent	A-Excellent
Monoethanolamine	A-Excellent	A-Excellent
Morpholine	N/A	A-Excellent
Motor oil	A-Excellent	A-Excellent
Mustard	A-Excellent	A-Excellent
Naphtha	A-Excellent	A-Excellent
Naphthalene	A-Excellent	A-Excellent
Natural Gas	A-Excellent	A-Excellent
Nickel Chloride	D-Severe Effect	C-Fair
Nickel Nitrate	B-Good	B-Good
Nickel Sulfate	B-Good	B-Good
Nitrating Acid (<15% HNO ₃)	C-Fair	D-Severe Effect
Nitrating Acid (>15% H ₂ SO ₄)	C-Fair	C-Fair
Nitrating Acid (<1% Acid)	C-Fair	A-Excellent
Nitrating Acid (<15% H ₂ SO ₄)	C-Fair	C-Fair
Nitric Acid (20%)	A-Excellent	A-Excellent
Nitric Acid (50%)	A-Excellent	A-Excellent
Nitric Acid (5-10%)	A-Excellent	A-Excellent
Nitric Acid (Concentrated)	A-Excellent	A-Excellent
Nitrobenzene	B-Good	B-Good
Nitrogen Fertilizer	N/A	N/A
Nitromethane	A-Excellent	A-Excellent

CHEMICAL / SUBSTANCE	304 Stainless Steel Compatibility	316 Stainless Steel Compatibility
Nitrous Acid	B-Good	B-Good
Nitrous Oxide	B-Good	B-Good
Oils: Aniline	A-Excellent	A-Excellent
Oils: Anise	N/A	A-Excellent
Oils: Bay	N/A	A-Excellent
Oils: Bone	N/A	A-Excellent
Oils: Castor	A-Excellent	A-Excellent
Oils: Cinnamon	A-Excellent	A-Excellent
Oils: Citric	A-Excellent	A-Excellent
Oils: Clove	A-Excellent	A-Excellent
Oils: Coconut	A-Excellent	A-Excellent
Oils: Cod Liver	A-Excellent	A-Excellent
Oils: Corn	A-Excellent	A-Excellent
Oils: Cottonseed	A-Excellent	A-Excellent
Oils: Creosote	B-Good	B-Good
Oils: Diesel Fuel (20, 30, 40, 50)	A-Excellent	A-Excellent
Oils: Fuel (1, 2, 3, 5A, 5B, 6)	A-Excellent	A-Excellent
Oils: Ginger	D-Severe Effect	D-Severe Effect
Oils: Hydraulic Oil (Petro)	A-Excellent	A-Excellent
Oils: Hydraulic Oil (Synthetic)	A-Excellent	A-Excellent
Oils: Lemon	A-Excellent	A-Excellent
Oils: Linseed	A-Excellent	A-Excellent
Oils: Mineral	A-Excellent	A-Excellent
Oils: Olive	A-Excellent	A-Excellent
Oils: Orange	A-Excellent	A-Excellent
Oils: Palm	A-Excellent	A-Excellent
Oils: Peanut	A-Excellent	A-Excellent
Oils: Peppermint	A-Excellent	A-Excellent
Oils: Pine	A-Excellent	A-Excellent
Oils: Rapeseed	A-Excellent	A-Excellent
Oils: Rosin	A-Excellent	A-Excellent
Oils: Sesame Seed	A-Excellent	A-Excellent
Oils: Silicone	A-Excellent	A-Excellent
Oils: Soybean	A-Excellent	A-Excellent
Oils: Sperm (whale)	A-Excellent	A-Excellent
Oils: Tanning	A-Excellent	A-Excellent
Oils: Transformer	A-Excellent	A-Excellent
Oils: Turbine	A-Excellent	A-Excellent
Oleic Acid	A-Excellent	A-Excellent
Oleum 100%	A-Excellent	A-Excellent
Oleum 25%	B-Good	B-Good
Oxalic Acid (cold)	B-Good	A-Excellent
Ozone	B-Good	A-Excellent
Palmitic Acid	B-Good	A-Excellent
Paraffin	A-Excellent	A-Excellent
Pentane	C-Fair	C-Fair
Perchloric Acid	C-Fair	C-Fair
Perchloroethylene	B-Good	A-Excellent
Petrolatum	A-Excellent	A-Excellent
Petroleum	A-Excellent	A-Excellent
Phenol (10%)	B-Good	B-Good
Phenol (Carbolic Acid)	B-Good	B-Good
Phosphoric Acid (>40%)	D-Severe Effect	D-Severe Effect
Phosphoric Acid (crude)	D-Severe Effect	B-Good
Phosphoric Acid (molten)	N/A	C-Fair
Phosphoric Acid (<40%)	D-Severe Effect	C-Fair
Phosphoric Acid Anhydride	N/A	N/A
Phosphorus	A-Excellent	A-Excellent
Phosphorus Trichloride	A-Excellent	A-Excellent
Photographic Developer	A-Excellent	A-Excellent
Photographic Solutions	D-Severe Effect	N/A
Phthalic Acid	B-Good	A-Excellent
Phthalic Anhydride	A-Excellent	A-Excellent
Picric Acid	B-Good	B-Good
Potash (Potassium Carbonate)	B-Good	B-Good
Potassium Bicarbonate	B-Good	B-Good
Potassium Bromide	B-Good	B-Good
Potassium Chlorate	B-Good	B-Good

STAINLESS STEEL CHEMICAL RESISTANCE CHARTS

CHEMICAL / SUBSTANCE	304 Stainless Steel Compatibility	316 Stainless Steel Compatibility
Potassium Chloride	B-Good	A-Excellent
Potassium Chromate	B-Good	B-Good
Potassium Cyanide Solutions	B-Good	B-Good
Potassium Dichromate	B-Good	B-Good
Potassium Ferricyanide	B-Good	B-Good
Potassium Ferrocyanide	B-Good	B-Good
Potassium Hydroxide (Caustic Potash)	B-Good	A-Excellent
Potassium Hypochlorite	C-Fair	B-Good
Potassium Iodide	A-Excellent	A-Excellent
Potassium Nitrate	B-Good	B-Good
Potassium Oxalate	B-Good	B-Good
Potassium Permanganate	B-Good	B-Good
Potassium Sulfate	B-Good	A-Excellent
Potassium Sulfide	B-Good	B-Good
Propane (liquefied)	A-Excellent	A-Excellent
Propylene	B-Good	A-Excellent
Propylene Glycol	B-Good	B-Good
Pyridine	A-Excellent	A-Excellent
Pyrogalllic Acid	B-Good	B-Good
Resorcinol	N/A	N/A
Rosins	A-Excellent	A-Excellent
Rum	A-Excellent	A-Excellent
Rust Inhibitors	A-Excellent	A-Excellent
Salad Dressings	A-Excellent	A-Excellent
Salicylic Acid	B-Good	B-Good
Salt Brine (NaCl saturated)	B-Good	A-Excellent
Sea Water	C-Fair	C-Fair
Shellac (Bleached)	A-Excellent	A-Excellent
Shellac (Orange)	A-Excellent	A-Excellent
Silicone	A-Excellent	A-Excellent
Silver Bromide	D-Severe Effect	D-Severe Effect
Silver Nitrate	B-Good	B-Good
Soap Solutions	A-Excellent	A-Excellent
Soda Ash (see Sodium Carbonate)	A-Excellent	A-Excellent
Sodium Acetate	B-Good	B-Good
Sodium Aluminate	A-Excellent	A-Excellent
Sodium Benzoate	N/A	N/A
Sodium Bicarbonate	A-Excellent	A-Excellent
Sodium Bisulfate	D-Severe Effect	C-Fair
Sodium Bisulfite	B-Good	B-Good
Sodium Borate (Borax)	B-Good	B-Good
Sodium Bromide	C-Fair	C-Fair
Sodium Carbonate	A-Excellent	A-Excellent
Sodium Chlorate	A-Excellent	B-Good
Sodium Chloride	B-Good	B-Good
Sodium Chromate	B-Good	B-Good
Sodium Cyanide	A-Excellent	B-Good
Sodium Ferrocyanide	B-Good	B-Good
Sodium Fluoride	D-Severe Effect	D-Severe Effect
Sodium Hydrosulfite	N/A	N/A
Sodium Hydroxide (20%)	B-Good	B-Good
Sodium Hydroxide (50%)	B-Good	B-Good
Sodium Hydroxide (80%)	C-Fair	B-Good
Sodium Hypochlorite (<20%)	C-Fair	C-Fair
Sodium Hypochlorite (100%)	D-Severe Effect	D-Severe Effect
Sodium Hyposulfate	A-Excellent	A-Excellent
Sodium Metaphosphate	A-Excellent	A-Excellent
Sodium Metasilicate	A-Excellent	A-Excellent
Sodium Nitrate	B-Good	B-Good
Sodium Perborate	B-Good	B-Good
Sodium Peroxide	A-Excellent	A-Excellent
Sodium Polyphosphate	B-Good	B-Good
Sodium Silicate	A-Excellent	B-Good
Sodium Sulfate	B-Good	B-Good
Sodium Sulfide	B-Good	D-Severe Effect
Sodium Sulfite	B-Good	A-Excellent
Sodium Tetraborate	A-Excellent	A-Excellent
Sodium Thiosulfate (hypo)	A-Excellent	B-Good

CHEMICAL / SUBSTANCE	304 Stainless Steel Compatibility	316 Stainless Steel Compatibility
Sorghum	A-Excellent	A-Excellent
Soy Sauce	A-Excellent	A-Excellent
Stannic Chloride	D-Severe Effect	D-Severe Effect
Stannic Fluoborate	N/A	A-Excellent
Stannous Chloride	C-Fair	A-Excellent
Starch	A-Excellent	A-Excellent
Stearic Acid	B-Good	A-Excellent
Stoddard Solvent	A-Excellent	A-Excellent
Styrene	A-Excellent	A-Excellent
Sugar (Liquids)	A-Excellent	A-Excellent
Sulfate (Liquors)	B-Good	B-Good
Sulfur Chloride	D-Severe Effect	D-Severe Effect
Sulfur Dioxide	D-Severe Effect	A-Excellent
Sulfur Dioxide (dry)	D-Severe Effect	A-Excellent
Sulfur Hexafluoride	N/A	N/A
Sulfur Trioxide	A-Excellent	C-Fair
Sulfur Trioxide (dry)	D-Severe Effect	A-Excellent
Sulfuric Acid (<10%)	D-Severe Effect	B-Good
Sulfuric Acid (10-75%)	D-Severe Effect	D-Severe Effect
Sulfuric Acid (75-100%)	C-Fair	D-Severe Effect
Sulfuric Acid (cold concentrated)	C-Fair	B-Good
Sulfuric Acid (hot concentrated)	D-Severe Effect	C-Fair
Sulfurous Acid	B-Good	B-Good
Sulfuryl Chloride	N/A	N/A
Tallow	A-Excellent	A-Excellent
Tannic Acid	B-Good	A-Excellent
Tanning Liquors	A-Excellent	A-Excellent
Tartaric Acid	C-Fair	C-Fair
Tetrachloroethane	B-Good	A-Excellent
Tetrachloroethylene	N/A	A-Excellent
Tetrahydrofuran	A-Excellent	A-Excellent
Tin Salts	N/A	D-Severe Effect
Toluene (Toluol)	A-Excellent	A-Excellent
Tomato Juice	A-Excellent	A-Excellent
Trichloroacetic Acid	D-Severe Effect	C-Fair
Trichloroethane	B-Good	B-Good
Trichloroethylene	B-Good	B-Good
Trichloropropane	A-Excellent	A-Excellent
Tricresylphosphate	B-Good	B-Good
Triethylamine	A-Excellent	A-Excellent
Trisodium Phosphate	B-Good	B-Good
Turpentine	A-Excellent	A-Excellent
Urea	B-Good	B-Good
Uric Acid	B-Good	B-Good
Urine	A-Excellent	A-Excellent
Varnish	A-Excellent	A-Excellent
Vegetable Juice	A-Excellent	A-Excellent
Vinegar	A-Excellent	A-Excellent
Vinyl Acetate	B-Good	B-Good
Vinyl Chloride	B-Good	A-Excellent
Water, Acid, Mine	B-Good	B-Good
Water, Deionized	A-Excellent	A-Excellent
Water, Distilled	A-Excellent	A-Excellent
Water, Fresh	A-Excellent	A-Excellent
Water, Salt	B-Good	B-Good
Weed Killers	A-Excellent	A-Excellent
Whey	A-Excellent	A-Excellent
Whiskey & Wines	A-Excellent	A-Excellent
White Liquor (Pulp Mill)	A-Excellent	A-Excellent
White Water (Paper Mill)	A-Excellent	A-Excellent
Xylene	B-Good	B-Good
Zinc Chloride	B-Good	B-Good
Zinc Hydrosulfite	A-Excellent	A-Excellent
Zinc Sulfate	B-Good	A-Excellent

CERTIFICATIONS



Stainless Steel Cable Tie and Banding Approvals

- American Bureau of Shipping TYPE APPROVED
- ISO 9001: 2015 US3238
- Underwriters Laboratories: E244590
- 12 Other Certification Agency Approvals found under ABS EU RO Certification (see next page)

RoHS Compliance

All Hayata manufactured products listed below are fully compliant with **EU RoHS Directive 2002/95/EC**. These products are created from stainless or carbon steel and include none of the hazardous substances listed in the directive as part of the manufacturing process.

- Stainless Steel Ties
- Stainless Steel Tags
- Stainless Steel bands
- Stainless Steel Buckles

Stainless Steel Chart

Compositions of Common Stainless Steel Grades

Maximum weight % unless a range or minimum is shown.

Types:

- S-A = Austenitic
- S-M = Martensitic
- S-D = Duplex

	201	304	316	317	321	347	403
Type	S-A	S-A	S-A	S-A	S-A	S-A	S-M
C	0.15	0.08	0.08	0.08	0.08	0.08	0.15
Mn	5.50	2.00	2.00	2.00	2.00	2.00	1.00
P	0.06	0.045	0.045	0.045	0.045	0.045	0.040
S	0.030	0.030	0.030	0.030	0.030	0.030	0.030
Si	1.00	1.00	1.00	1.00	1.00	1.00	0.50
Ni	3.50-5.00	8.00-10.50	10.00-14.00	11.00-15.00	9.00-12.00	9.00-13.00	-
Cr	16.00-18.00	18.00-20.00	16.00-18.00	18.00-20.00	17.00-19.00	17.00-19.00	11.50-13.00
Mo	-	-	2.00-3.00	3.00-4.00	-	-	-
V	-	-	-	-	-	-	-
Cu	-	-	-	-	-	-	-
Other	-	-	-	-	Ti, 5xC min.	Cb-Ta, 10xC min.	-
Source	SAE J405 JAN89	SAE J405 JAN89	SAE J405 JAN89	SAE J405 JAN89	SAE J405 JAN89	SAE J405 JAN89	SAE J405 JAN89

ABS EU RO CERTIFICATION



Our ABS EU RO Type approved stainless steel cable ties and banding are for use at shipyards around the world where these certified organizations are required:

- American Bureau of Shipping
- Bureau Veritas (BV)
- China Classification Society (CCS)
- Croatia Register of Shipping (CRS)
- DNV GL
- Indian Register of Shipping (IRS)
- Korean Shipping (KR)
- Lloyd's Register Group Ltd (LR)
- Nippon Kaiji Kyokai General Incorporated Foundation (ClassNK)
- Polish Register of Shipping (PRS)
- RINA Services S.p.A. (RINA)
- Russian Maritime Register of Shipping (RS)



What's so special about Hayata's EU RO certification?

Hayata is the first, and currently only, US stainless steel cable tie manufacturer to achieve this global level of ABS certification. In accordance with Article 10 of Regulation (EC) No 391/2009 of the European Parliament and of the Council of 23 April 2009 “on common rules and standards for ship inspection and survey organizations,” the above listed organizations, recognized by the EU on this certificate’s date, have agreed on the technical and procedural conditions under which they will mutually recognize this certificate.

- TBC – Roller Ball Cable Ties (See pages 5-6)
- KST – Ladder Cable Ties (See page 10)
- KRCT – Releasable Cable Ties (See page 9)

- CB – Coated Banding (See page 18)
- SB – Stainless Steel Super Band Coated Banding & Tough Band Coated Banding (See page 19)

Part Number Index

24-Hr. Tag Service	41	CPPFC25D	23	FBX300XC	29	GB2018	20
2D Embossed Tags	35	CPPFC32D	23	FBX300XH	28	GT6000	34
ACETAL4	14	CPPFC38D	23	FBX300XHC	28	GTOTE	27
ACEHEAD4	14	CPPFC44D	23	FBX400	28	HAY-40B	36
ALBAND-B-85	49	CPPFC51D	23	FBX400C	28	HDB6	30
APCB5	27	CPPFC57D	23	FBX400X	29	HDB7	30
BC-6	32	CPPFC64D	23	FBX400XC	29	HDB8	30
BC-8	32	CPPFC70D	23	FBX400XH	28	HYNT100-18MD	14
BT15000	15	CPPFC76D	23	FBX400XHC	28	HYNT150-40MD	14
BT-200	34	CPPFC89D	23	FBX500	28	HYNT200-40MD	14
BTOTE	27	CPPFC102D	23	FBX500C	28	HYNT200-50MD	14
BTX-8000	33	CPPFC114D	23	FBX500X	29	HYNT300-50MD	14
BW-1/7	32	CPPFC127D	23	FBX500XC	29	HYNT380-50MD	14
C-1	52	CPPFC152D	23	FBX500XH	28	HYNT380-120MD	14
C-2	52	CPPFC165D	23	FBX500XHC	28	ID-Markers	52
C-3	52	CPPFC178D	23	FBX650	28	INS3043-020	26
CB3044	24	CPPFC203D	23	FBX650C	28	INS3044-020	26
CB3045	24	CT3	16	FBX650X	29	INS3044-020BL	26
CB3162	18	CT4	16	FBX650XC	29	INS3046-020	26
CB3163	18	CT5	16	FBX650XH	28	INS3046-020BL	26
CB3164	18	CT7	16	FBX650XHC	28	INSW3043	26
CB3165	18	D304-165	11	FBX850	28	INSW3044	26
CB3166	18	D304-254	11	FBX850C	28	JR100	33
CB3165-18WBKL	18	D304-406	11	FBX850X	29	KRCT150/10	9
CB3165-24WBKL	18	D304-572	11	FBX850XC	29	KRCT150/10C	9
CB3165-30WBKL	18	D304-737	11	FBX850XH	28	KRCT150/5	9
CB3165-300	24	D304-254H	11	FBX850XHC	28	KRCT150/5C	9
CB3165-400	24	D304-406H	11	FBX1050	28	KRCT230/10	9
CB3165-500	24	D304-572H	11	FBX1050C	28	KRCT230/10C	9
CB3165-600	24	D304-737H	11	FBX1050X	29	KRCT230/5	9
CB3165-700	24	D304-889H	11	FBX1050XC	29	KRCT230/5C	9
CB3165-1000	24	EZID	5	FBX1050XH	28	KRCT305/10	9
CBWS3162	30	FBX18CP	22	FBX1050XHC	28	KRCT305/10C	9
CBWS3163	30	FBX24CP	22	FSB-1/7	32	KRCT305/5	9
CBWS3164	30	FBX30CP	22	FSB-1/7G	32	KRCT305/5C	9
CBWS3165	30	FBX18WS	21	GAL5	25	KRCT450/10	9
CBWS3166	30	FBX24WS	21	GAL5-300	25	KRCT450/10C	9
CGAL5	25	FBX30WS	21	GAL5-400	25	KRCT450/5	9
CGAL5-300	25	FBX300	28	GAL5-500	25	KRCT450/5C	9
CGAL5-400	25	FBX300C	28	GAL5-600	25	KRCT610/10	9
CGAL5-500	25	FBX300X	29	GAL5-700	25	KRCT610/10C	9
CGAL5-600	25			GAL5-1000	25	KRCT610/5	9
CGAL5-700	25			GB2016	20	KRCT610/5C	9
CGAL5-1000	25			GB2017	20	KRCT762/10	9

Part Number Index

KRCT762/10C	9	LDPE-2	29	SSC470-2	32	STNC-MT396-50B	14
KRCT914/10	9	MKit-4	18	SSC470-4	32	STNC-MT394-120B	14
KRCT914/10C	9	MKit-5	18	SSC508-2	32	T-5119	43
KST225/12	10	MB-1	52	SSC508-4	32	T-6008	51
KST225/12C	10	MobileTag™ 600	36	STNC100-18	13	T-6334	51
KST225/7	10	MON3	27	STNC100-18B	13	T-8910	43
KST225/7C	10	MON4	27	STNC150-40	13	T-8919	43
KST300/12	10	MON5	27	STNC150-40B	13	T-8919B	51
KST300/12C	10	MON6	27	STNC190-50	13	T-8996	51
KST300/7	10	Order Tags	42	STNC190-50B	13	TAG 10	45
KST300/7C	10	PB6-020	33	STNC200-18	13	TAG 11	44
KST360/12	10	PT500	33	STNC200-18B	13	TAG 12	44
KST360/12C	10	RT400	34	STNC200-40	13	TAG 13	44
KST360/7	10	SB-1/7	32	STNC200-40B	13	TAG 14	44
KST360/7C	10	SB-1/7G	32	STNC280-40	13	TAG 15	44
KST450/12	10	SB2012	19	STNC280-40B	13	TAG 16	44
KST450/12C	10	SB2013	19	STNC300-120	13	TAG 17	44
KST450/7	10	SB2014	19	STNC300-120B	13	TAG 18	44
KST450/7C	10	SB2015	19	STNC300-50	13	TAG 19	45
KST610/12	10	SB2016	19	STNC300-50B	13	TAG 20	45
KST610/12C	10	SB2016-020	19	STNC368-40	13	TAG 21	45
KST610/7	10	SB3162	19	STNC368-40B	13	TAG 22	45
KST610/7C	10	SB3163	19	STNC380-120	13	TAG 23	45
KST750/12	10	SB3164	19	STNC380-120B	13	TAG 24	45
KST750/12C	10	SB3165	19	STNC380-50	13	TAG 25	46
KST750/7	10	SB3165-015	19	STNC380-50B	13	TAG 26	46
KST750/7C	10	SB3165-015-2	19	STNC460-120	13	TAG 27	46
KST915/12	10	SB3165-020	19	STNC460-120B	13	TAG 28	46
KST915/12C	10	SB3166	19	STNC540-120	13	TAG 29	47
KST915/7	10	SBU2012	30	STNC540-120B	13	TAG 30	47
KST915/7C	10	SBU2013	30	STNC700-120	13	TAG 31	47
LB300153	20	SBU2014	30	STNC700-120B	13	TAG 32	49
LB300154	20	SBU2015	30	STNC-MT117-18	14	TAG 33	49
LB300155	20	SBU2016	30	STNC-MT211-18	14	TAG 34	49
LB300156	20	SmartTag™ 1100	39	STNC-MT168-40	14	TAG 35	50
LB300203	20	SmartTag™ 4500	37	STNC-MT216-50	14	TAG 36	50
LB300204	20	SSC254-2	32	STNC-MT318-50	14	TAG 37	50
LB300205	20	SSC254-4	32	STNC-MT396-50	14	TAG 38	50
LB300206	20	SSC311-2	32	STNC-MT394-120	14	TAG 39	50
LB300253	20	SSC311-4	32	STNC-MT117-18B	14	TAG 40	51
LB300254	20	SSC381-2	32	STNC-MT211-18B	14	TAG 41	51
LB300255	20	SSC381-4	32	STNC-MT168-40B	14	TAG 42	51
LB300256	20	SSC413-2	32	STNC-MT216-50B	14	TAG 43	51
LDPE-1	29	SSC413-4	32	STNC-MT318-50B	14	TAG 44	51

Part Number Index

TAG 50	46	TBC1200HC	6	TBC360ALC	12	TBC863H-DLC	8
TAG 51	46	TBC1200HZ	7	TBC360C	5	TBC1016H-DL	8
TAG 52	46	TBC1200HXC	7	TBC360H	6	TBC1016H-DLC	8
TAG 53	46	TBC1200Z	7	TBC360HC	6	TBC749XHD-DL	8
TAG 54	47	TBC1200ZC	7	TBC360HZ	7	TBC749XHD-DLC	8
TAG 55	47	TBC1359XHD-DL	8	TBC360HXC	7	TBC1054XHD-DL	8
TAG 60	48	TBC1359XHD-DLC	8	TBC360XHD	6	TBC1054XHD-DLC	8
TAG 61	48	TBC1359XXHD-DL	8	TBC360XHDC	6	TBC1359XHD-DL	8
TAG 62	48	TBC1359XXHD-DLC	8	TBC360Z	7	TBC1359XHD-DLC	8
TAG 63	48	TBC1400	5	TBC360ZC	7	TBC749XXHD-DL	8
Tag Service	41	TBC1400C	5	TBC457XHD	12	TBC749XXHD-DLC	8
TB2002	30	TBC1400H	6	TBC457XXHD	6	TBC1054XXHD-DL	8
TB2003	30	TBC1400HC	6	TBC457XXHDC	6	TBC1359XXHD-DLC	8
TB2004	30	TBC1400HZ	7	TBC520	5	TBC1359XXHD-DL	8
TB2005	30	TBC1400HXC	7	TBC520AL	12	TBC1054XXHD-DLC	8
TB2006	30	TBC1400Z	7	TBC520A/C	12	TBC762XHD	6
TB3162	30	TBC1400ZC	7	TBC520C	5	TBC762XXHD	6
TB3163	30	TBC150	5	TBC520H	6	TBC762XXHDC	6
TB3164	30	TBC150AL	12	TBC520HC	6	TBC840	5
TB3165	30	TBC150ALC	12	TBC520HZ	7	TBC840C	5
TB3166	30	TBC150C	5	TBC520HXC	7	TBC840H	6
TBC100	5	TBC200	5	TBC520XHD	6	TBC840HC	6
TBC1000	5	TBC200AL	12	TBC520ZC	7	TBC840HZ	7
TBC1000C	5	TBC200ALC	12	TBC520XHDC	6	TBC840HXC	7
TBC1000H	6	TBC200C	5	TBC520Z	7	TBC840XHD	6
TBC1000HC	6	TBC200H	6	TBC558XHD	12	TBC840XHDC	6
TBC1000HZ	7	TBC200HC	6	TBC610XXHD	6	TBC840Z	7
TBC1000HXC	7	TBC200HZ	7	TBC610XXHDC	6	TBC840ZC	7
TBC1000XHD	6	TBC200HXC	7	TBC680	5	TBC863H-DL	8
TBC1000XHDC	6	TBC200LB/50	11	TBC680C	5	TBC863H-DLC	8
TBC1000Z	7	TBC200LB/100	11	TBC680H	6	TG-3	13
TBC1000ZC	7	TBC200LBHEAD	11	TBC680HC	6	TG-7	13
TBC100C	5	TBC200XHD	6	TBC680HZ	7	TG-9	13
TBC1016H-DL	8	TBC200XHDC	6	TBC680HXC	7	TPE-4	29
TBC1016H-DLC	8	TBC200Z	7	TBC680XHD	6	TPE-5	29
TBC1016XHD	12	TBC200ZC	7	TBC680XHDC	6	TT2400	34
TBC1054XHD-DL	8	TBC290XHD	6	TBC680Z	7	WS2012	30
TBC1054XHD-DLC	8	TBC290XHDC	6	TBC680ZC	7	WS2013	30
TBC1054XXHD-DL	8	TBC350LB/50	11	TBC470H-DL	8	WS2014	30
TBC1054XXHD-DLC	8	TBC350LB/100	11	TBC470H-DLC	8	WS2015	30
TBC1200	5	TBC350LBHEAD	11	TBC711H-DL	8	WS2016	30
TBC1200C	5	TBC360	5	TBC711H-DLC	8	YTOTE	27
TBC1200H	6	TBC360AL	12	TBC863H-DL	8		

Warranty & General Information

HAYATA, LTD. (here after as “HAYATA”) warrants its products to be free from defect in material and workmanship. NO OTHER WARRANTY OF ANY KIND WHATSOEVER, EITHER ORAL OR WRITTEN, INCLUDING IMPLIED WARRANTY OF MERCHANTABILITY, FITNESS FOR A PARTICULAR PURPOSE, OR OTHER WARRANTY OF QUALITY IS EITHER EXPRESSED OR IMPLIED FOR THE PERFORMANCE OF THIS PRODUCT, EVEN IF HAYATA HAS BEEN NOTIFIED OF THE POTENTIAL OF SUCH A LOSS OR CLAIM.

This is HAYATA’S sole warranty and is in lieu of other warranties, expressed or implied, which are hereby excluded, including in particular, all warranties of merchantability or fitness for a particular purpose. HAYATA shall not be liable for any loss, damage or expenses directly or indirectly related to the use of its products or from any other cause or for consequential damages. It is expressly understood that HAYATA is not responsible for damage or injury caused to other products, property, or persons, by reason of the use of its products. HAYATA reserves the right to change and/or improve any HAYATA product without notice.

No representative has authority to make any representation, promise or agreement, except as stated herein.

HAYATA products meet agreed specifications according to established tests performed under controlled laboratory conditions and specific test requirements. These tests are not intended to reflect the performance of the product under actual conditions. Performance of this product as a component in a finished product may not necessarily meet the test requirements. Due to the number and variety of applications for which this product may be purchased, HAYATA does not recommend specific application or product designs or assume responsibility for use results obtained or suitability for specific applications. No statement contained herein shall be construed as a license to operate, or as an endorsement of products of specific applications. No statement contained herein shall be construed as a license to operate, or as an endorsement of products of specific manufacturers or systems. Representations by any person of performance data other than as set forth herein or otherwise in writing by HAYATA are unauthorized and are utilized at customer’s risk.

Prices are subject to change without notice and all such items will be billed at prices in effect at the time of shipment.

Materials

Hayata metal ties are available in Stainless Steel Grade 316/304/201, and 200/300. Stainless Steel is ideally suited for hazardous environments such as extreme temperatures, corrosive atmosphere, intense vibrations and nuclear applications. For applications that demand high corrosion resistance, use Stainless Steel Grade 316. Stainless Steel 201 is typically suited for signage banding application. Hayata reserves the right to substitute material with equal or better corrosion resistance and/or mechanical specifications.

Coated Ties and Banding

All metal ties and banding are available with non-toxic halogen free polyester or PPA coating. Coating provides handling comfort at extreme low temperatures. Coating also improves corrosion resistance, impedes weathering effect and protects the bundle. Fully coated roller ball type (patent pending) is recommended for extreme cold temperatures and offshore applications. It can be effortlessly installed by hand or tool. Coating is available in a wide choice of colors.

Quality

Hayata is an ISO 9001:2015 registered firm and offers a range of UL listed, Lloyd’s Certified, ABS and DNV approved cable ties and banding. Hayata metal ties have smooth edges. They will not damage wires. They may be safely and reliably installed even by hand. Hayata metal ties are tested in split mandrel arrangement to be specified tensile rating.

Hayata is The Strongest Around!™



Hayata, Ltd.

2707 Realty Rd. Suite 306
Carrollton TX 75006
Toll Free: 833.862.1668
Phone: 214.360.7708
Fax: 214.360.7718



www.Hayata.com
sales@hayata.com

The strongest in products,
innovation and customer service.

Italy

Via Isonzo 67
40033 - Casalecchio
di Reno (BO)
Italy

Singapore

Level 35, The Gateway West
150 Beach Road
Singapore 189720
Phone: +65.6622.5758
Fax: +65.6622.5759

HAYATA

