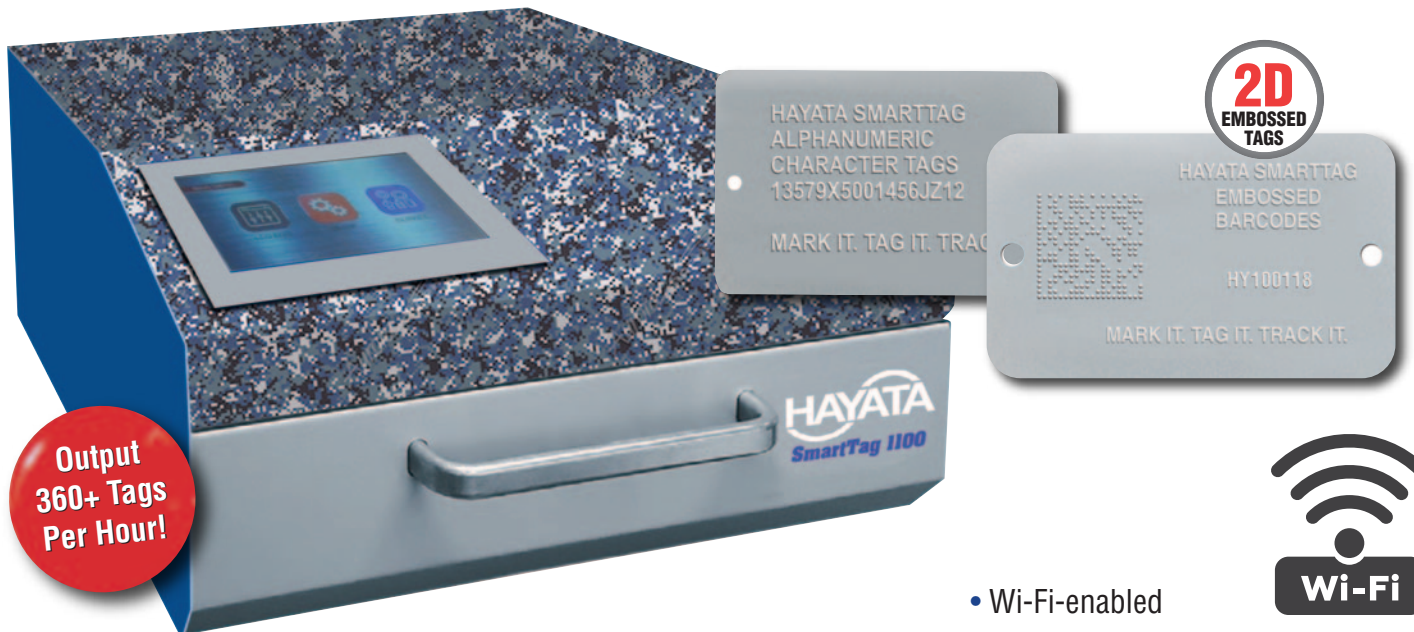


SmartTag™ 1100 FOR LOW- TO MEDIUM-VOLUME OPERATIONS



The **Hayata SmartTag™ 1100** is a portable, self-contained metal tag embosser designed to output a variety of Hayata tag sizes. This unit embosses alphanumeric characters on stainless steel tags and can also output 2D data barcodes. With its new interface and management features, the SmartTag 1100 is ideal for low- to medium-volume tag output operations.

MULTIPLE CONNECTION OPTIONS

The Hayata SmartTag 1100 can be connected to a computer via Wi-Fi or USB/Ethernet cable to load tag data and manage production. The new Hayata touchscreen also allows direct manual entry.

REMOTE ACCESS & MANAGEMENT

Web services: Using a network-connected computer or tablet, remote set-up and operation can be managed via the web or through a VNC (Virtual Networking Computing) client.

Data transfer: Data import / export and software updates can be handled through any device connected to the SmartTag 1100 by using FTP (File Transfer Protocol).

- | | |
|----------------------------|------------------------------|
| ■ Cable / Hose Tags | ■ Inventory |
| ■ Valve ID & Tracking Tags | ■ Asset Management & Control |
| ■ Body & VIN Plates | ■ Component ID |
| ■ Military ID Tags | ■ Serial Number Tags |

- Wi-Fi-enabled
- Four model options to match your operation's outputting requirements (see back page for options)
- Can output standard alphanumeric characters and 2D data barcodes
- Password-protected for higher data security
- Remote access & management
- USB & Ethernet ports
- Built in touch-screen provides easy user interface
- Easy-to-use software
- Weighs 54 Lbs and comes with a built-in carrying handle

**No one matches
Hayata's
Stainless Steel
Tag Inventory
& Service!**

SmartTag™ 1100 FOR LOW- TO MEDIUM-VOLUME OPERATIONS

Select the SmartTag™ 1100 Model That Best Fits Your Tagging Operation's Requirements



SmartTag 1100

Outputs alphanumeric characters on one tag size.

SmartTag 1100D

Outputs alphanumeric characters and **2D data barcodes** on one tag size.

SmartTag 1100VT

Outputs alphanumeric characters on one size of stainless steel tag.
Hayata TAG10

SmartTag 1100VTD

Outputs alphanumeric characters and **2D data barcodes** on same tag range as the 1100VT

Use these Hayata Tags for SmartTag 1100/D



Tag Size:
3.37" x 2.13" (85.6mm x 54mm)
Outputs 360 Tags Per Hour*



Minimum Tag Size: 2.05" x 1.14" (52mm x 29mm)
Maximum Tag Size: 2.56" x 2.36" (65mm x 60mm)

Outputs 360 Tags Per Hour*



Outputting Dog Tags or Medical Alert Tags? Use the Hayata SmartTag 1100DT



TAG 10
1.25" x 2.25"
(28.5mm x 50.8mm)

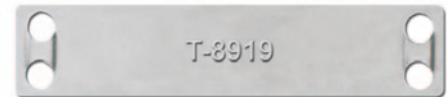


TAG 19
1.12" x 2.00"
(28.5mm x 50.8mm)
Rolled Edge

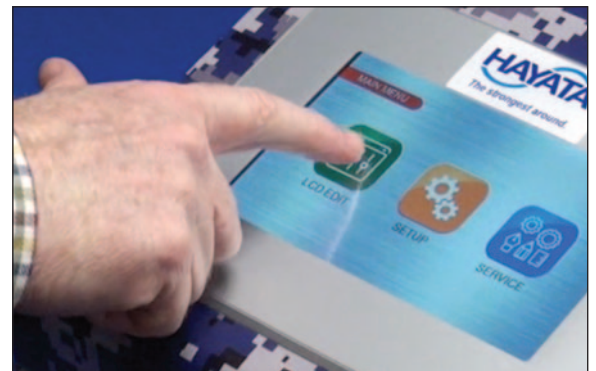


SmartTag 1100EZ

Outputs alphanumeric characters on the T-8919 stainless steel EZ Entry Tag.



Tag Materials:	Stainless Steel or Aluminum
Thickness:	0.3556 ÷ 0.70 mm - 0.014 ÷ 0.0275 in
Input hopper:	Up to 250 plates capacity (.4 mm / 0.0157 in) Automatic feed only
Output hopper:	External collection tray
Wheel capacity:	60 slots
Type set:	Multiple Character Configurations
Embossing area:	From top edge up to 2.56" / 65 mm leaving free 4 mm / .157 in. at the bottom edge
Certifications:	UL, FCC, CE, RoHS
Performance:	Varies based on number of characters, lines and if producing 2D barcode tags



The Hayata SmartTag™ 1100 feature a built in touch-screen for easy user interface.



To Order: US Toll Free: 833-862-1668 • www.Hayata.com • sales@Hayata.com