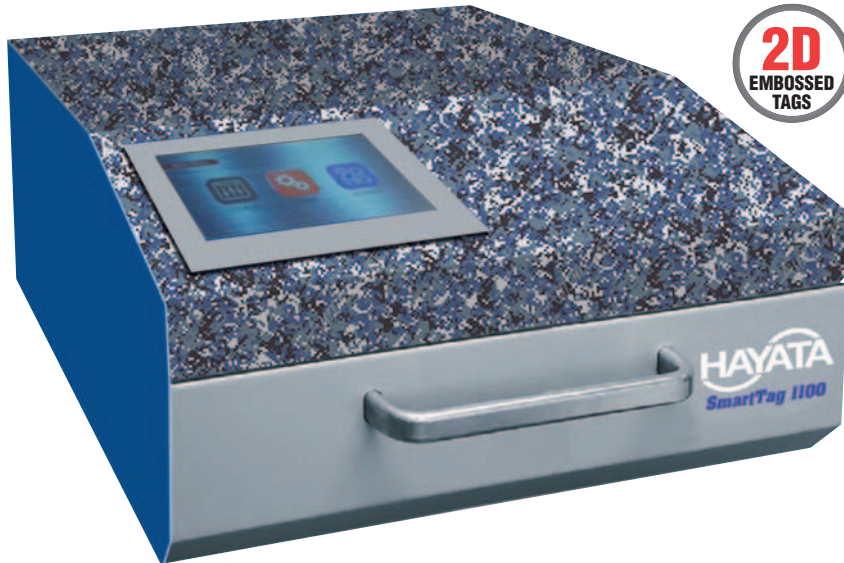




The strongest around.™

SmartTag™ 1100DT FOR THE OUTPUT OF MILITARY DOG TAGS & MEDICAL ALERT TAGS

The Hayata SmartTag 1100DT is a portable, self-contained metal tag embosser designed to output Military Dog Tags and Medical Alert Tags. This unit embosses alphanumeric characters on stainless steel tags and can also output 2D data barcodes. With its new interface and management features, the SmartTag 1100 is ideal for low- to medium-volume tag output operations. See back page for SmartTag 1100 machine options.



The Hayata SmartTag 1100 can be connected to a computer via Wi-Fi or USB/Ethernet cable to load tag data and manage production. The new Hayata touchscreen also allows direct manual entry.



REMOTE ACCESS & MANAGEMENT

Web services: Using a network-connected computer or tablet, remote set-up and operation can be managed via the web or through a VNC (Virtual Networking Computing) client.

Data transfer: Data import / export and software updates can be handled through any device connected to the SmartTag 4500 by using FTP (File Transfer Protocol).

IDEAL FOR:

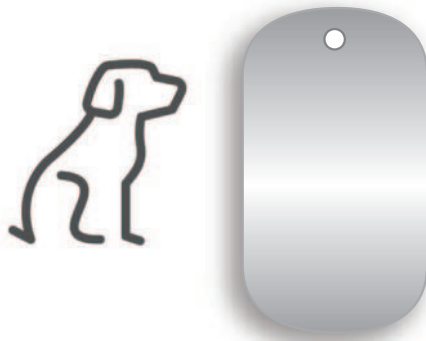
- Military ID Tags
- Medical Alert Tags

- Wi-Fi-enabled
- Four model options to match your operation's outputting requirements (see back page for options)
- Can output standard alphanumeric characters and 2D data barcodes
- Password-protected for higher data security
- Remote access & management
- USB & Ethernet ports
- Built in touch-screen provides easy user interface
- Easy-to-use software
- Weighs 54 Lbs and comes with a built-in carrying handle

To Order: US Toll Free: 833-862-1668 • www.Hayata.com • sales@Hayata.com

SmartTag™ 1100DT FOR LOW- TO MEDIUM-VOLUME OPERATIONS

Outputs alphanumeric characters on Military Dog Tags or Medical Alert Tags



Military Dog Tags

(Rolled Edge)

TAG 10 1.25" x 2.25"
(28.5mm x 50.8mm)

SmartTag 1100DT Specifications

Tag Materials:	Stainless Steel or Aluminum
Thickness:	0.3556 ÷ 0.70 mm - 0.014 ÷ 0.0275 in
Input hopper:	Up to 250 plates capacity (.4 mm / 0.0157 in) Automatic feed only
Output hopper:	External collection tray
Wheel capacity:	60 slots
Type set:	Multiple Character Configurations
Embossing area:	From top edge up to 2.56" / 65 mm leaving free 4 mm / .157 in. at the bottom edge
Certifications:	UL, FCC, CE, RoHS
Performance:	Varies based on number of characters, lines and if producing 2D barcode tags



Medical Alert Tags

TAG 18 1.12" x 2.00"
(28.5mm x 50.8mm)



The Hayata SmartTag™ 1100DT feature a built in touch-screen for easy user interface.

No one matches Hayata's Stainless Steel Tag Inventory & Service!

To Order: US Toll Free: 833-862-1668 • www.Hayata.com • sales@Hayata.com