

# TAGGING OPERATIONS

MARK IT. TAG IT. TRACK IT.



## Embossed tags are the best choice for easy, long-term identification.

Embossed stainless steel tags can be read long-term no matter how harsh the operating conditions. This is why the military uses embossed dog tags.

- Stamped or engraved tag character channels can get filled in with dirt and grime and are difficult to clean out.
- Silk screened tags are easily scratched, painted and eventually fade.
- If stamped, engraved or silk-screened tags are painted by careless workers, they become illegible. Embossed tags that are painted are still legible.

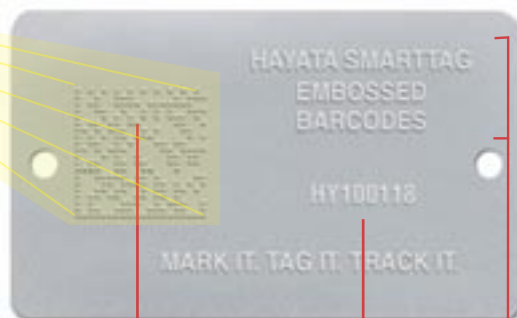
### IDEAL FOR:

- Cable/hose tags
- Tags for galvanized or heat-treated processes
- Inventory/asset control & tracking tags for harsh environments
- Serial number tags
- Military ID tags
- Work-in-progress & VIN plates
- Automotive body & VIN plates



**BARCODE READERS**

### Typical 2D Plate Elements



2D Embossed Barcode - MATRIX

Coded Data

General Embossed Info

- SmartTag™ 4500 & 1100 2D algorithms are industry standard
- Standard barcode readers readily available
- Hayata recommends Dataman, Zebra and Motorola 2D readers
  - Curved or reflective surfaces
  - Easy software