

# TAGGING OPERATIONS

MARK IT. TAG IT. TRACK IT.



## Embossed tags are the best choice for easy, long-term identification.

Embossed stainless steel tags can be read long-term no matter how harsh the operating conditions. This is why the military uses embossed dog tags.

- Stamped or engraved tag character channels can get filled in with dirt and grime and are difficult to clean out.
- Silk screened tags are easily scratched, painted and eventually fade.
- If stamped, engraved or silk-screened tags are painted by careless workers, they become illegible. Embossed tags that are painted are still legible.

### IDEAL FOR:

- Cable/hose tags
- Tags for galvanized or heat-treated processes
- Inventory/asset control & tracking tags for harsh environments
- Serial number tags
- Military ID tags
- Work-in-progress & VIN plates
- Automotive body & VIN plates

### Typical 2D Plate Elements



2D Embossed  
Barcode -  
MATRIX

Coded  
Data

General  
Embossed  
Info

- SmartTag™ 4500 & 1100 2D algorithms are industry standard
- Standard barcode readers readily available
- Hayata recommends Dataman, Zebra and Motorola 2D readers
  - Curved or reflective surfaces
  - Easy software

## TAGGING OPERATION MANUAL MACHINES

# MobileTag™ 600

## Manual Tag Embossing Machine

The Hayata MobileTag™ 600 metal embosser is ideal for low-to-medium volume tagging. Lightweight (33 lbs.) and compact for easy transport, this simple-to-use embossing unit offers three different font sizes.

### What Makes MobileTag 600 the BEST?

When you pull the trigger to advance to the next character, MobileTag 600 keeps that character in a straight line and an equal distance between previous characters. Even though you manually pull the lever, it automatically advances the tag to the next character.

No more uneven, up-and-down tag characters!

**Which Tags?** Hayata offers 27 stainless steel tag styles for the MobileTag 600. If you see this icon (●), that tag can be used on the MobileTag 600.



### Ask About Our 24 Hour Embossing Service

Send Us Your Spreadsheet. We'll have your embossed tags produced and on the way within 24 hours.

See page 41 for details.



**Which Tags?** If you see this icon (●), that tag can be used on the HAY-40B.

# HAY-40B

## Debossing Numbering & Lettering Machine

Designed for stamping stainless steel identification tags and plates.

The HAY-40B comes with your choice of character dial size and matching space rack(s).

Character Dial Sizes: 1/16", 3/32", 1/8", 5/32" and 3/16".

Debosses tag sizes from 5.75" wide x 4.25" high. Also works with round tags.

See page 49 for stainless steel cable markers

**To Order:** US Toll-Free: 833-862-1668 • [www.Hayata.com](http://www.Hayata.com) • [sales@Hayata.com](mailto:sales@Hayata.com)

# TAGGING OPERATION AUTOMATED MACHINES

## SmartTag™ 4500 FOR MEDIUM- TO HIGH-VOLUME OPERATIONS



**Output  
450+ Tags  
Per Hour!**

The **Hayata SmartTag™ 4500** is the KING of metal tag embossers. Designed to output a variety of Hayata tag sizes and materials, this rugged unit can emboss alphanumeric characters and 2D data barcode tags. Now 10% faster than previous models, the SmartTag 4500 features a touchscreen interface and new management features. It's ideal for medium- to high-volume tagging operations.

### MULTIPLE CONNECTION OPTIONS

The Hayata SmartTag 4500 can be connected to a computer via Wi-Fi or USB/Ethernet cable to load tag data and manage production. The new Hayata touchscreen also allows direct manual entry.

### REMOTE ACCESS & MANAGEMENT

**Web services:** Using a network-connected computer or tablet, remote set-up and operation can be managed via the web or through a VNC (Virtual Networking Computing) client.

**Data transfer:** Data import / export and software updates can be handled through any device connected to the SmartTag 4500 by using FTP (File Transfer Protocol).

- Wi-Fi-enabled
- Two model options to match your operation's outputting requirements (see back page for options)
- Can output standard alphanumeric characters and 2D data barcodes
- Password-protected for higher data security
- Remote access & management
- USB & Ethernet ports
- 250-tag capacity auto-load and unload – optional FIFO technology or side eject
- Large selection of fonts
- Built-in touch-screen for easy user interface
- Easy-to-use software

**WORKS WITH**  
• **30 TAG STYLES**  
See Pages 42-51





# SmartTag™ 4500

## FOR MEDIUM- TO HIGH-VOLUME OPERATIONS

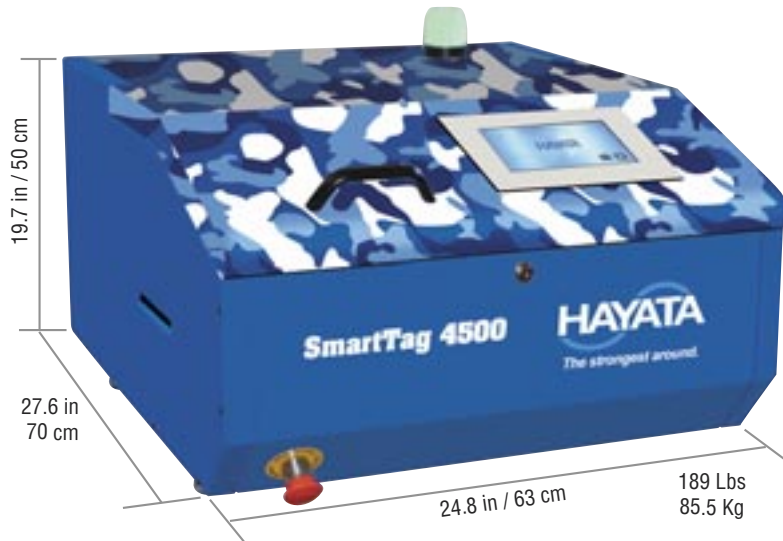
Select the SmartTag™ 4500 Model That Best Fits Your Tagging Operation's Requirements

### SmartTag 4500

Outputs alphanumeric characters on a variety of tag sizes, thicknesses and materials.

### SmartTag 4500D

Outputs alphanumeric characters and **2D data barcodes** on a variety of tag sizes, thicknesses and materials.



### PLATE & FEEDER / MARKING

Tag Output Per Hour:*	Up to 450 – Based on single-line 8-character tag.
Tag Materials:	Stainless steel, carbon steel, aluminum, copper and brass.
Tag Size Range:	Rectangular: Width: 1.18 - 4.53 in / 30 - 115 mm / Height: 0.83 - 3.54 in / 21 - 90 mm Round Tag Size Diameter Range: 0.5 in / 38.1 mm.
Thickness:	0.015 ÷ 0.0354 in / 0.4 ÷ 0.9 mm.
Input Hopper:	Up to 250 plates capacity (0.015 in. / 4 mm). Automatic feed only.
Output Hopper:	Up to 250 plates capacity. Options - FIFO or side eject.
Wheel Capacity:	Standard 60 slot or optional high-capacity 90 slot.
Type Set:	Multiple character configurations available.
Embossing Area:	From top edge – 2.56 in / 65 mm. Bottom edge no-print zone – .157 in / 4 mm.

**No one matches  
Hayata's  
Stainless Steel  
Tag Inventory  
& Service!**

### COMMUNICATIONS & SOFTWARE

Interface:	USB 2.0 port (device and host), Ethernet, Wi-Fi.
Software:	Linux-based self-enclosed software. PC application software Windows 7/8/10.

### HARDWARE

System Hardware:	CPU Arm Cortex-A8 / RAM 256 MB, with flash-disk and file system Linux O.S.-based.
Power Supply:	100 - 117 - 220 - 230 or 240 Volts - 50 or 60 Hz.
Operating Environment:	Temperature: 5 - 40 °C / 41 - 104 °F, relative humidity: 30% - 90% non-condensing.
Certifications:	UL, FCC, CE, RoHS.

\*Output speed varies based on number of characters, lines and if producing 2D barcode tags

# TAGGING OPERATION AUTOMATED MACHINES

## SmartTag™ 1100

FOR LOW- TO MEDIUM-VOLUME OPERATIONS



- Wi-Fi-enabled
- Four model options to match your operation's outputting requirements (see back page for options)
- Can output standard alphanumeric characters and 2D data barcodes
- Password-protected for higher data security
- Remote access & management
- USB & Ethernet ports
- Built in touch-screen provides easy user interface
- Easy-to-use software
- Weighs 54 Lbs and comes with a built-in carrying handle

The **Hayata SmartTag™ 1100** is a portable, self-contained metal tag embosser designed to output a variety of Hayata tag sizes. This unit embosses alphanumeric characters on stainless steel tags and can also output 2D data barcodes. With its new interface and management features, the SmartTag 1100 is ideal for low- to medium-volume tag output operations.

### MULTIPLE CONNECTION OPTIONS

The Hayata SmartTag 1100 can be connected to a computer via Wi-Fi or USB/Ethernet cable to load tag data and manage production. The new Hayata touchscreen also allows direct manual entry.

### REMOTE ACCESS & MANAGEMENT

**Web services:** Using a network-connected computer or tablet, remote set-up and operation can be managed via the web or through a VNC (Virtual Networking Computing) client.

**Data transfer:** Data import / export and software updates can be handled through any device connected to the SmartTag 1100 by using FTP (File Transfer Protocol).

No one matches  
**Hayata's**  
Stainless Steel  
Tag Inventory  
& Service!

# SmartTag™ 1100 FOR LOW- TO MEDIUM-VOLUME OPERATIONS

Select the SmartTag™ 1100 Model That Best Fits Your Tagging Operation's Requirements



## SmartTag 1100

Outputs alphanumeric characters on one tag size.

## SmartTag 1100D

Outputs alphanumeric characters and **2D data barcodes** on one tag size.

Use these Hayata Tags for SmartTag 1100/D



Tag Size:  
3.37" x 2.13" (85.6mm x 54mm)  
Outputs 360 Tags Per Hour\*



## SmartTag 1100VT

Outputs alphanumeric characters on one size of stainless steel tag.  
Hayata TAG10

## SmartTag 1100VTD

Outputs alphanumeric characters and **2D data barcodes** on same tag range as the 1100VT

Minimum Tag Size: 2.05" x 1.14" (52mm x 29mm)  
Maximum Tag Size: 2.56" x 2.36" (65mm x 60mm)

Outputs 360 Tags Per Hour\*



## Outputting Dog Tags or Medical Alert Tags? Use the Hayata SmartTag 1100DT



TAG 10 1.25" x 2.25"  
(28.5mm x 50.8mm)

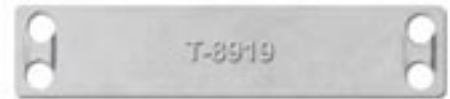


TAG 19 1.12" x 2.00"  
(28.5mm x 50.8mm)  
Rolled Edge

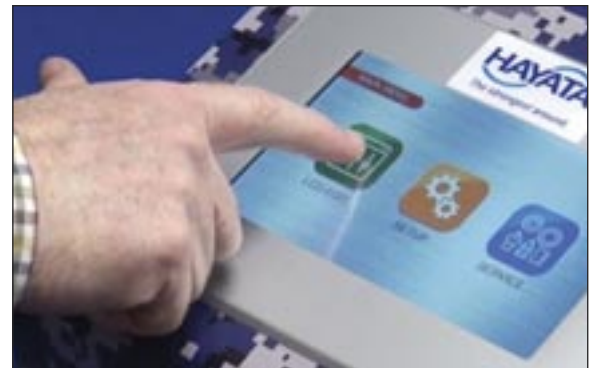


## SmartTag 1100EZ

Outputs alphanumeric characters on the T-8919 stainless steel EZ Entry Tag.



Tag Materials:	Stainless Steel or Aluminum
Thickness:	0.3556 ÷ 0.70 mm - 0.014 ÷ 0.0275 in
Input hopper:	Up to 250 plates capacity (.4 mm / 0.0157 in) Automatic feed only
Output hopper:	External collection tray
Wheel capacity:	60 slots
Type set:	Multiple Character Configurations
Embossing area:	From top edge up to 2.56" / 65 mm leaving free 4 mm / .157 in. at the bottom edge
Certifications:	UL, FCC, CE, RoHS
Performance:	Varies based on number of characters, lines and if producing 2D barcode tags



The Hayata SmartTag™ 1100 feature a built in touch-screen for easy user interface.

**No one matches Hayata's  
Stainless Steel Tag  
Inventory & Service!**

**To Order:** US Toll-Free: 833-862-1668 • [www.Hayata.com](http://www.Hayata.com) • [sales@Hayata.com](mailto:sales@Hayata.com)